



# IRF-1 Rabbit mAb

<b>Catalog No</b>	YP-rAb-17482
<b>Isotype</b>	IgG
<b>Reactivity</b>	Human,Mouse,Rat,Fish
<b>Applications</b>	WB,IHC,IF,IP,ELISA
<b>Gene Name</b>	IRF1
<b>Protein Name</b>	Interferon regulatory factor 1
<b>Purification Process</b>	Protein A
<b>Specificity</b>	Endogenous
<b>Formulation</b>	PBS, 50% glycerol, 0.05% Proclin 300, 0.05%BSA
<b>Source</b>	Monoclonal, Rabbit,IgG
<b>Dilution</b>	IHC 1:100-1:400; WB 1:500-1:2000; IF 1:200-1:1000; ELISA 1:5000-1:20000; IP 1:50-1:200; Note: For IHC, we suggest antigen retrieval with TE buffer pH 9.0
<b>Concentration</b>	0.5 mg/ml
<b>Purity</b>	≥90%
<b>Storage Stability</b>	-15° C to -25° C/1 year(Do not lower than -25° C)
<b>Synonyms</b>	IRF1 ; Interferon regulatory factor 1 ; IRF-1
<b>Observed Band</b>	48kD
<b>Calculated Molecular Weight</b>	37kD
<b>Cell Pathway</b>	Nucleus . Cytoplasm . MYD88-associated IRF1 migrates into the nucleus more efficiently than non-MYD88-associated IRF1. .
<b>Tissue Specificity</b>	Pancreas,Placenta,Spleen,
<b>Function</b>	Disease:Deletion or rearrangement of IRF1 are a cause of preleukemic myelodysplastic syndrome (MDS) and of acute myelogenous leukemia (AML).,Function:Specifically binds to the upstream regulatory region of type I IFN and IFN-inducible MHC class I genes (the interferon consensus sequence (ICS)) and activates those genes. Acts as a tumor suppressor.,induction:By viruses and IFN.,PTM:Sumoylation represses the transcriptional activity and displays enhanced resistance to protein degradation. Inactivates the tumor suppressor activity. Elevated levels in tumor cells. Major site is Lys-275. Sumoylation is enhanced by PIAS3 (By similarity). Desumoylated by SENP1 in tumor cells and appears to compete with ubiquitination on C-terminal sites.,PTM:Ubiquitinated. Appears to compete with sumoylation on C-terminal sites.,similarity:Belongs to the IRF family.,similarity:Contains 1 tryptophan pentad repeat DNA-binding domain.,





### Background

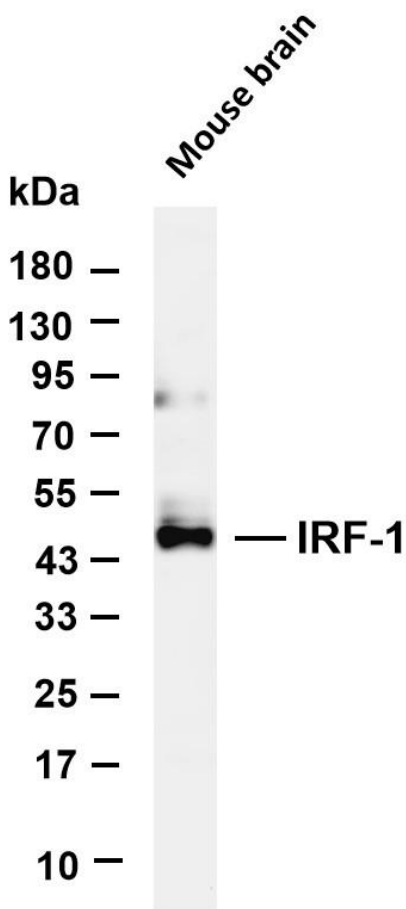
IRF1 encodes interferon regulatory factor 1, a member of the interferon regulatory transcription factor (IRF) family. IRF1 serves as an activator of interferons alpha and beta transcription, and in mouse it has been shown to be required for double-stranded RNA induction of these genes. IRF1 also functions as a transcription activator of genes induced by interferons alpha, beta, and gamma. Further, IRF1 has been shown to play roles in regulating apoptosis and tumor-suppression. [provided by RefSeq, Jul 2008],

### matters needing attention

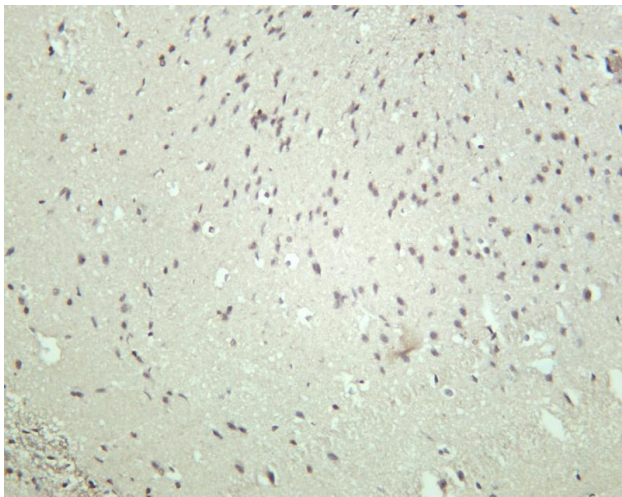
Avoid repeated freezing and thawing!

### Usage suggestions

This product can be used in immunological reaction related experiments. For more information, please consult technical personnel.



Various whole cell lysates were separated by 4-20% SDS-PAGE, and the membrane was blotted with anti-IRF-1 antibody. The HRP-conjugated Goat anti-Rabbit IgG (H + L) antibody was used to detect the antibody. Lane 1: Mouse brain Predicted band size: 37kDa Observed band size: 48kDa



Rat brain was stained with anti-IRF-1 rabbit antibody

## 杭州臻优品生物科技有限公司

#### 热销产品:

蛋白、一抗、抗体对、ELISA试剂盒、生化试剂盒  
CCK8试剂盒、QPCR检测试剂盒

#### 检测服务:

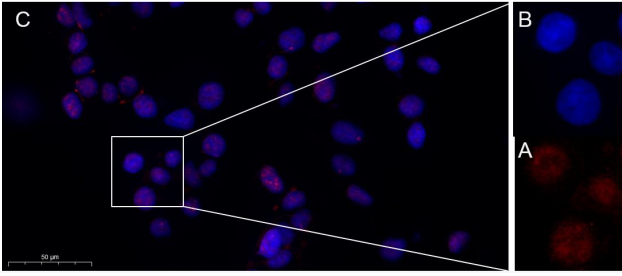
ELISA检测及定制服务 | 生化检测 | PCR、QPCR检测 | WB检测  
ICO-IP检测 | 切片 | 染色 | 免疫组化 | 免疫荧光 | 透射电镜全套  
| 宏基因组、转录组、基因组、蛋白组、代谢组测序



关注官网



关注客服



Immunofluorescence analysis of MCF7 . Picture A: IRF-1 Rabbit mAb (red). Picture B: DAPI (blue). Picture C: Merge of A+B

## 杭州臻优品生物科技有限公司

### 热销产品:

蛋白、一抗、抗体对、ELISA试剂盒、生化试剂盒  
CCK8试剂盒、QPCR检测试剂盒

### 检测服务:

ELISA检测及定制服务 | 生化检测 | PCR、QPCR检测 | WB检测  
ICO-IP检测 | 切片 | 染色 | 免疫组化 | 免疫荧光 | 透射电镜全套  
| 宏基因组、转录组、基因组、蛋白组、代谢组测序



关注官网



关注客服