



# Actinin- $\alpha$ 2 Rabbit mAb

<b>Catalog No</b>	YP-rAb-17477
<b>Isotype</b>	IgG
<b>Reactivity</b>	Human,Mouse,Rat
<b>Applications</b>	WB,IHC,IF,IP,ELISA
<b>Gene Name</b>	ACTN2/ACTN3
<b>Protein Name</b>	Alpha-actinin-2
<b>Purification Process</b>	Protein A
<b>Specificity</b>	Endogenous
<b>Formulation</b>	PBS, 50% glycerol, 0.05% Proclin 300, 0.05%BSA
<b>Source</b>	Monoclonal, Rabbit,IgG
<b>Dilution</b>	IHC 1:200-1:1000; WB 1:500-1:2000; IF 1:200-1:1000; ELISA 1:5000-1:20000; IP 1:50-1:200; Note: For IHC, we suggest antigen retrieval with TE buffer pH 9.0
<b>Concentration</b>	0.5 mg/ml
<b>Purity</b>	≥90%
<b>Storage Stability</b>	-15° C to -25° C/1 year(Do not lower than -25° C)
<b>Synonyms</b>	ACTN2 ; Alpha-actinin-2 ; Alpha-actinin skeletal muscle isoform 2 ; F-actin cross-linking protein
<b>Observed Band</b>	104kD
<b>Calculated Molecular Weight</b>	104kD
<b>Cell Pathway</b>	Cytoplasm, myofibril, sarcomere, Z line . Colocalizes with MYOZ1 and FLNC at the Z-lines of skeletal muscle.
<b>Tissue Specificity</b>	Expressed in both skeletal and cardiac muscle.
<b>Function</b>	Disease:Defects in ACTN2 are the cause of cardiomyopathy dilated type 1AA (CMD1AA) [MIM:612158]. Dilated cardiomyopathy is a disorder characterized by ventricular dilation and impaired systolic function, resulting in congestive heart failure and arrhythmia. Patients are at risk of premature death..Function:F-actin cross-linking protein which is thought to anchor actin to a variety of intracellular structures. This is a bundling protein..similarity:Belongs to the alpha-actinin family..similarity:Contains 1 actin-binding domain..similarity:Contains 2 CH (calponin-homology) domains..similarity:Contains 2 EF-hand domains..similarity:Contains 4 spectrin repeats..subcellular location:Colocalizes with MYOZ1 and FLNC at the Z-lines of skeletal muscle..subunit:Homodimer; antiparallel. Also forms heterodimers with ACTN3. Interacts with ADAM12, MYOZ1, MYOZ2 and MYOZ3. Interacts via its C-terminal region with the LDB3

杭州臻优品生物科技有限公司

热销产品:

蛋白、一抗、抗体对、ELISA试剂盒、生化试剂盒  
CCK8试剂盒、QPCR检测试剂盒

检测服务:

ELISA检测及定制服务 | 生化检测 | PCR、QPCR检测 | WB检测  
ICO-IP检测 | 切片 | 染色 | 免疫组化 | 免疫荧光 | 透射电镜全套  
| 宏基因组、转录组、基因组、蛋白组、代谢组测序



关注官网



关注客服



PDZ domain. Interacts with XIRP2.,tissue specificity:Expressed in both skeletal and cardiac muscle.,

### Background

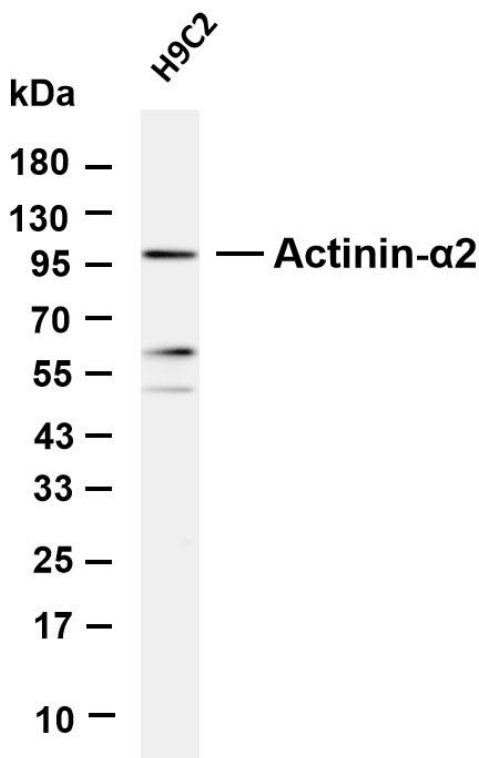
Alpha actinins belong to the spectrin gene superfamily which represents a diverse group of cytoskeletal proteins, including the alpha and beta spectrins and dystrophins. Alpha actinin is an actin-binding protein with multiple roles in different cell types. In nonmuscle cells, the cytoskeletal isoform is found along microfilament bundles and adherens-type junctions, where it is involved in binding actin to the membrane. In contrast, skeletal, cardiac, and smooth muscle isoforms are localized to the Z-disc and analogous dense bodies, where they help anchor the myofibrillar actin filaments. This gene encodes a muscle-specific, alpha actinin isoform that is expressed in both skeletal and cardiac muscles. Several transcript variants encoding different isoforms have been found for this gene. [provided by RefSeq, May 2013],

### matters needing attention

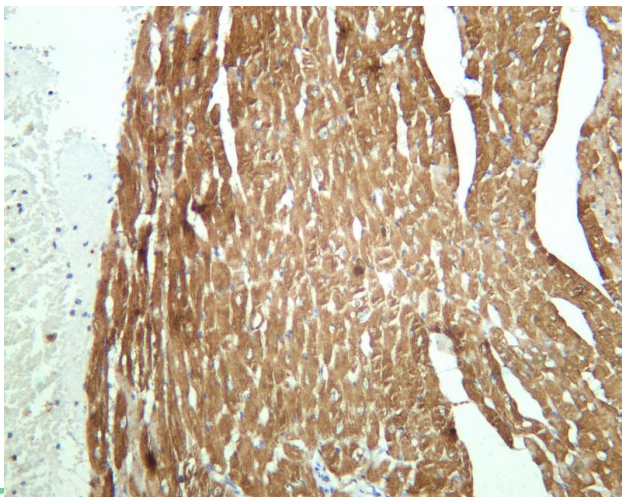
Avoid repeated freezing and thawing!

### Usage suggestions

This product can be used in immunological reaction related experiments. For more information, please consult technical personnel.



Various whole cell lysates were separated by 4-20% SDS-PAGE, and the membrane was blotted with anti-Actinin- $\alpha$ 2 antibody. The HRP-conjugated Goat anti-Rabbit IgG (H + L) antibody was used to detect the antibody. Lane 1: H9C2 Predicted band size: 104kDa Observed band size: 104kDa



Mouse cardiac muscle was stained with anti-Actinin-  $\alpha$  2 rabbit antibody

## 杭州臻优品生物科技有限公司

### 热销产品:

蛋白、一抗、抗体对、ELISA试剂盒、生化试剂盒  
CCK8试剂盒、QPCR检测试剂盒

### 检测服务:

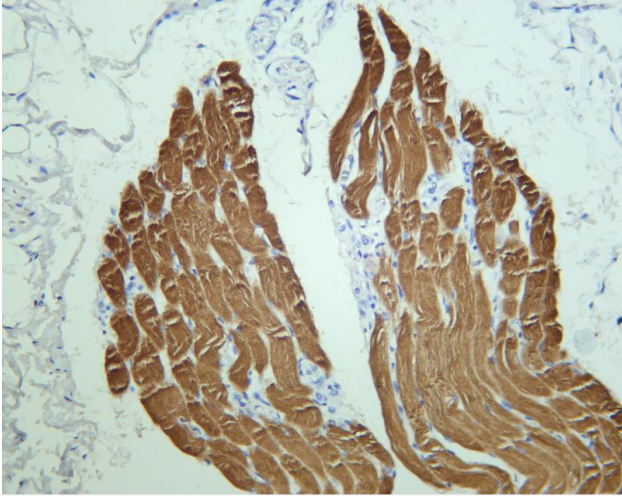
ELISA检测及定制服务 | 生化检测 | PCR、QPCR检测 | WB检测  
ICO-IP检测 | 切片 | 染色 | 免疫组化 | 免疫荧光 | 透射电镜全套  
| 宏基因组、转录组、基因组、蛋白组、代谢组测序



关注官网



关注客服



Human skeletal muscle was stained with anti-Actinin-  $\alpha$  2 rabbit antibody

## 杭州臻优品生物科技有限公司

### 热销产品:

蛋白、一抗、抗体对、ELISA试剂盒、生化试剂盒  
CCK8试剂盒、QPCR检测试剂盒

### 检测服务:

ELISA检测及定制服务 | 生化检测 | PCR、QPCR检测 | WB检测  
ICO-IP检测 | 切片 | 染色 | 免疫组化 | 免疫荧光 | 透射电镜全套  
| 宏基因组、转录组、基因组、蛋白组、代谢组测序



关注官网



关注客服