



MCP-1 Rabbit mAb

Catalog No	YP-rAb-17468
Isotype	IgG
Reactivity	Human
Applications	WB,IHC,IF,IP,ELISA
Gene Name	MCP1, SCYA2,CCL2
Protein Name	MCP1;Monocyte chemoattractant protein 1;Monocyte chemotactic protein 1;Monocyte secretory protein JE
Purification Process	Protein A
Specificity	Endogenous
Formulation	PBS, 50% glycerol, 0.05% Proclin 300, 0.05%BSA
Source	Monoclonal, Rabbit,IgG
Dilution	IHC 1:2000-1:10000; WB 1:1000-1:5000; IF 1:200-1:1000; ELISA 1:5000-1:20000; IP 1:50-1:200; Note: For IHC, we suggest antigen retrieval with TE buffer pH 9.0
Concentration	0.5 mg/ml
Purity	≥90%
Storage Stability	-15° C to -25° C/1 year(Do not lower than -25° C)
Synonyms	
Observed Band	11kD
Calculated Molecular Weight	11kD
Cell Pathway	Secreted
Tissue Specificity	Expressed in the seminal plasma, endometrial fluid and follicular fluid (at protein level),monocytes.
Function	Acts as a ligand for C-C chemokine receptor CCR2 .,Signals through binding and activation of CCR2 and induces a strong chemotactic response and mobilization of intracellular calcium ions .,Exhibits a chemotactic activity for monocytes and basophils but not neutrophils or eosinophils.,May be involved in the recruitment of monocytes into the arterial wall during the disease process of atherosclerosis.,
Background	This gene is one of several cytokine genes clustered on the q-arm of chromosome 17. Chemokines are a superfamily of secreted proteins involved in immunoregulatory and inflammatory processes. The superfamily is divided into four subfamilies based on the arrangement of N-terminal cysteine residues of the mature peptide. This chemokine is a member of the CC subfamily which is characterized by two adjacent cysteine residues. This cytokine displays





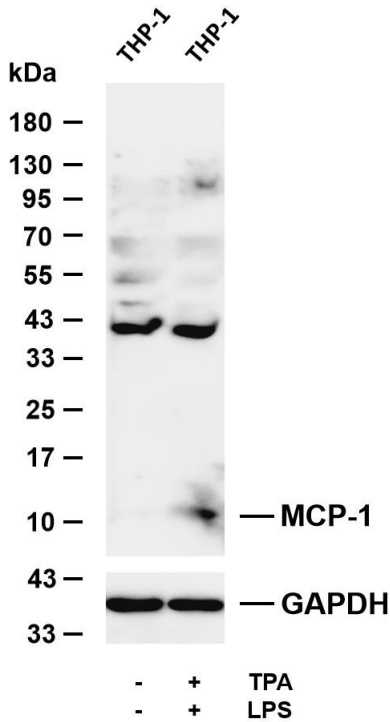
chemotactic activity for monocytes and basophils but not for neutrophils or eosinophils. It has been implicated in the pathogenesis of diseases characterized by monocytic infiltrates, like psoriasis, rheumatoid arthritis and atherosclerosis. It binds to chemokine receptors CCR2 and CCR4. Elevated expression of the encoded protein is associated with severe acute respiratory syndrome coronavirus 2 (SARS - CoV - 2) infection. [provided by RefSeq, Aug 2020]

matters needing attention

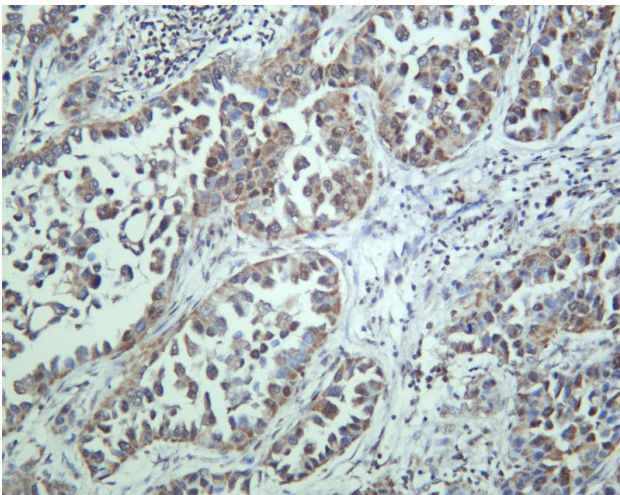
Avoid repeated freezing and thawing!

Usage suggestions

This product can be used in immunological reaction related experiments. For more information, please consult technical personnel.

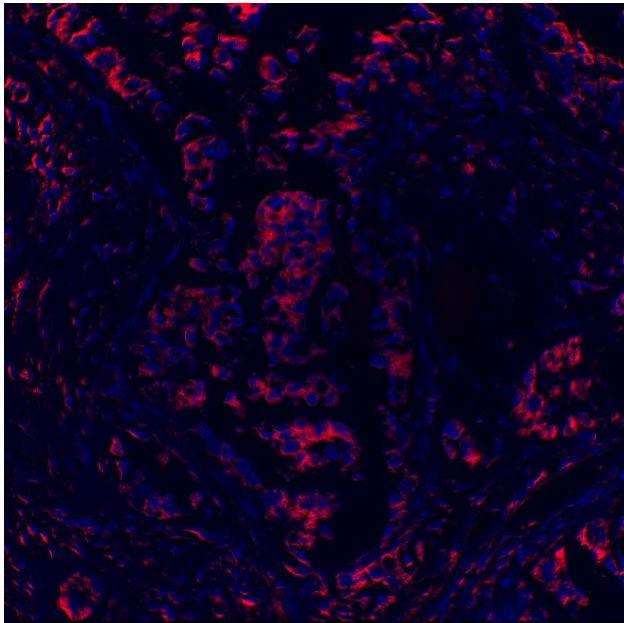


Various whole cell lysates were separated by 4-20% SDS-PAGE, and the membrane was blotted with anti-MCP-1 antibody. The HRP-conjugated Goat anti-Rabbit IgG (H + L) antibody was used to detect the antibody. Lane 1: THP-1 Lane 2: THP-1 treated with TPA(80nM) overnight and then treated with LPS(1 μ g/mL) for 1 hour Predicted band size: 11kDa Observed band size: 11kDa

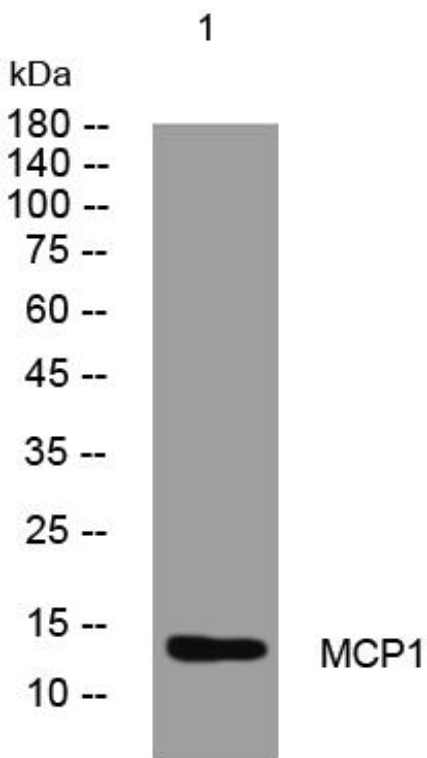


Human lung adenocarcinoma was stained with anti-MCP-1 rabbit antibody





Immunofluorescence analysis of Human lung adenocarcinoma



Western blot analysis of lysates from HeLa cells, primary antibody was diluted at 1:1000, 4° over night

