



γ Tubulin Rabbit mAb

Catalog No	YP-rAb-17461
Isotype	IgG
Reactivity	Human,Mouse,Rat
Applications	WB,IF,IP,ELISA
Gene Name	TUBG1
Protein Name	TUBG1
Purification Process	Protein A
Specificity	Endogenous
Formulation	PBS, 50% glycerol, 0.05% Proclin 300, 0.05%BSA
Source	Monoclonal, Rabbit,IgG
Dilution	WB 1:2000-1:10000; IF 1:200-1:1000; ELISA 1:5000-1:20000; IP 1:50-1:200;
Concentration	0.5 mg/ml
Purity	≥90%
Storage Stability	-15° C to -25° C/1 year(Do not lower than -25° C)
Synonyms	TUBG1
Observed Band	51kD
Calculated Molecular Weight	51kD
Cell Pathway	Cytoplasm, cytoskeleton, microtubule organizing center, centrosome . Cytoplasm, cytoskeleton, spindle . Localizes to mitotic spindle microtubules. .
Tissue Specificity	Mammary cancer,Skin,
Function	Tubulin is the major constituent of microtubules. Gamma tubulin is found at microtubule organizing centers (MTOC) such as the spindle poles or the centrosome, suggesting that it is involved in the minus-end nucleation of microtubule assembly.,mass spectrometry: PubMed:11840567,similarity:Belongs to the tubulin family.,subunit:Interacts with GCP2 and GCP3. Interacts with B9D2.,
Background	This gene encodes a member of the tubulin superfamily. The encoded protein localizes to the centrosome where it binds to microtubules as part of a complex referred to as the gamma-tubulin ring complex. The protein mediates microtubule nucleation and is required for microtubule formation and progression of the cell cycle. A pseudogene of this gene is found on chromosome 7. [provided by RefSeq, Jan 2009],



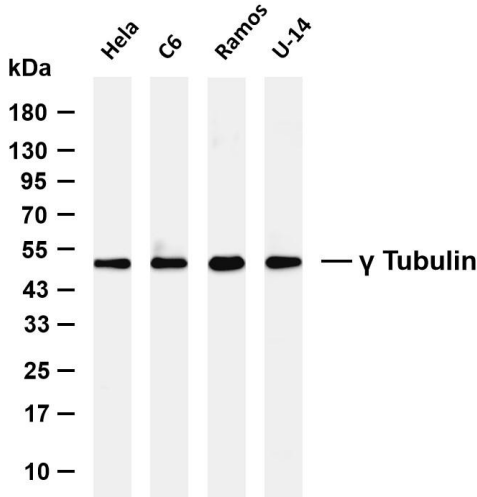


matters needing attention

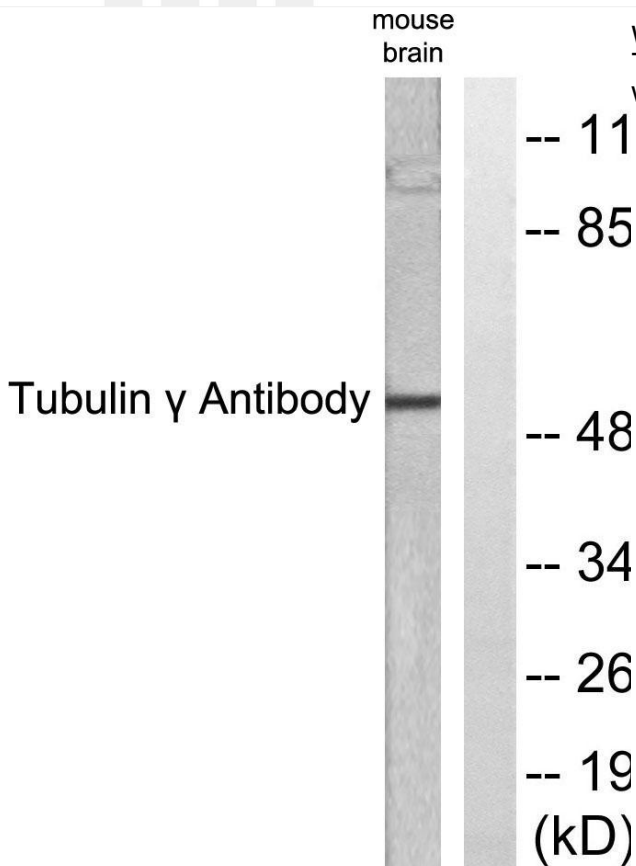
Avoid repeated freezing and thawing!

Usage suggestions

This product can be used in immunological reaction related experiments. For more information, please consult technical personnel.



Various whole cell lysates were separated by 4-20% SDS-PAGE, and the membrane was blotted with anti- γ Tubulin antibody. The HRP-conjugated Goat anti-Rabbit IgG (H + L) antibody was used to detect the antibody. Lane 1: Hela Lane 2: C6 Lane 3: Ramos Lane 4: U-14. Predicted band size: 51kDa Observed band size: 51kDa



Western blot analysis of lysates from mouse brain, using Tubulin gamma Antibody. The lane on the right is blocked with the synthesized peptide.

