



Cofilin Rabbit mAb

Catalog No	YP-rAb-17459
Isotype	IgG
Reactivity	Human,Mouse,Rat
Applications	WB,IHC,IF,ELISA
Gene Name	CFL1 CFL
Protein Name	Cofilin
Purification Process	Protein A
Specificity	Endogenous
Formulation	PBS, 50% glycerol, 0.05% Proclin 300, 0.05%BSA
Source	Monoclonal, Rabbit,IgG
Dilution	IHC 1:20000-1:50000; WB 1:2000-1:10000; IF 1:200-1:1000; ELISA 1:5000-1:20000; Note: For IHC, we suggest antigen retrieval with TE buffer pH 9.0
Concentration	0.5 mg/ml
Purity	≥90%
Storage Stability	-15° C to -25° C/1 year(Do not lower than -25° C)
Synonyms	Cofilin-1 ; 18 kDa phosphoprotein ; p18 ; Cofilin, non-muscle isoform ;
Observed Band	19kD
Calculated Molecular Weight	19kD
Cell Pathway	Nucleus matrix . Cytoplasm, cytoskeleton . Cell projection, ruffle membrane ; Peripheral membrane protein ; Cytoplasmic side . Cell projection, lamellipodium membrane ; Peripheral membrane protein ; Cytoplasmic side . Cell projection, lamellipodium . Cell projection, growth cone . Cell projection, axon . Colocalizes with the actin cytoskeleton in membrane ruffles and lamellipodia. Detected at the cleavage furrow and contractile ring during cytokinesis. Almost completely in nucleus in cells exposed to heat shock or 10% dimethyl sulfoxide.
Tissue Specificity	Widely distributed in various tissues.
Function	Controls reversibly actin polymerization and depolymerization in a pH-sensitive manner. It has the ability to bind G- and F-actin in a 1:1 ratio of cofilin to actin. It is the major component of intranuclear and cytoplasmic actin rods.,online information:Cofilin entry,PTM:Phosphorylated on Ser-3 in resting cells.,similarity:Belongs to the actin-binding proteins ADF family.,similarity:Contains 1 ADF-H domain.,subcellular location:Almost completely in nucleus in cells exposed to heat shock or 10% dimethyl

杭州臻优品生物科技有限公司

热销产品:

蛋白、一抗、抗体对、ELISA试剂盒、生化试剂盒
CCK8试剂盒、QPCR检测试剂盒

检测服务:

ELISA检测及定制服务 | 生化检测 | PCR、QPCR检测 | WB检测
ICO-IP检测 | 切片 | 染色 | 免疫组化 | 免疫荧光 | 透射电镜全套
| 宏基因组、转录组、基因组、蛋白组、代谢组测序



关注官网



关注客服



sulfoxide.,tissue specificity:Widely distributed in various tissues.,

Background

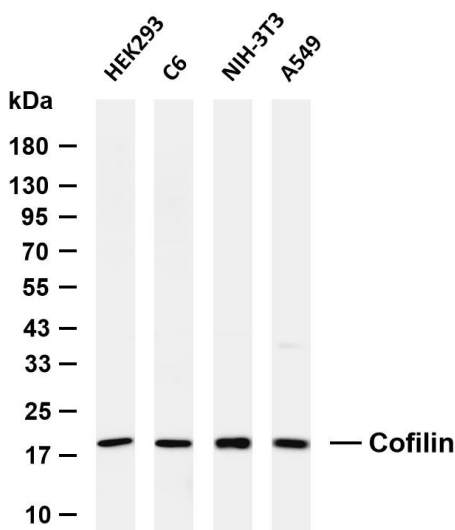
cofilin 1(CFL1) Homo sapiens The protein encoded by this gene can polymerize and depolymerize F-actin and G-actin in a pH-dependent manner. Increased phosphorylation of this protein by LIM kinase aids in Rho-induced reorganization of the actin cytoskeleton. Cofilin is a widely distributed intracellular actin-modulating protein that binds and depolymerizes filamentous F-actin and inhibits the polymerization of monomeric G-actin in a pH-dependent manner. It is involved in the translocation of actin-cofilin complex from cytoplasm to nucleus.[supplied by OMIM, Apr 2004],

matters needing attention

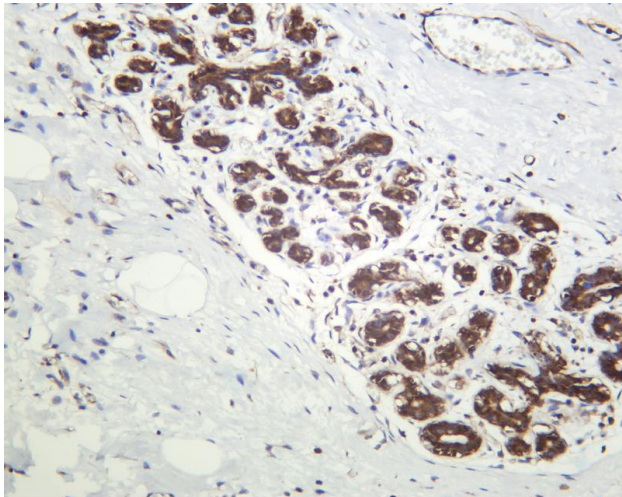
Avoid repeated freezing and thawing!

Usage suggestions

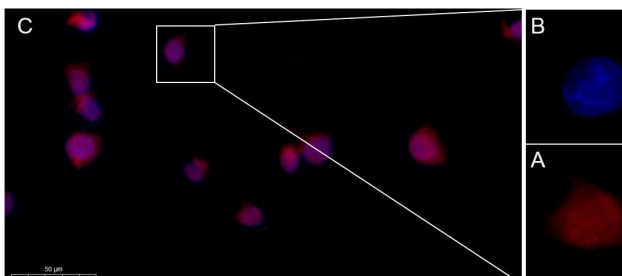
This product can be used in immunological reaction related experiments. For more information, please consult technical personnel.



Various whole cell lysates were separated by 4-20% SDS-PAGE, and the membrane was blotted with anti-Cofilin antibody. The HRP-conjugated Goat anti-Rabbit IgG (H + L) antibody was used to detect the antibody. Lane 1: HEK293 Lane 2: C6 Lane 3: NIH-3T3 Lane 4: A549 Predicted band size: 19kDa Observed band size: 19kDa



Human breast carcinoma was stained with anti-Cofilin Rabbit antibody



Immunofluorescence analysis of HeLa. Picture A: Cofilin Rabbit mAb (red). Picture B: DAPI (blue). Picture C: Merge of A+B

杭州臻优品生物科技有限公司

热销产品:

蛋白、一抗、抗体对、ELISA试剂盒、生化试剂盒
CCK8试剂盒、QPCR检测试剂盒

检测服务:

ELISA检测及定制服务 | 生化检测 | PCR、QPCR检测 | WB检测
ICO-IP检测 | 切片 | 染色 | 免疫组化 | 免疫荧光 | 透射电镜全套
| 宏基因组、转录组、基因组、蛋白组、代谢组测序



关注官网



关注客服