



pan Cadherin Rabbit mAb

Catalog No	YP-rAb-17458
Isotype	IgG
Reactivity	Human,Mouse,Rat
Applications	WB,IHC,IF,IP,ELISA
Gene Name	CDH1/CDH3/CDH4/CDH6
Protein Name	cadherin
Purification Process	Protein A
Specificity	Endogenous
Formulation	PBS, 50% glycerol, 0.05% Proclin 300, 0.05%BSA
Source	Monoclonal, Rabbit,IgG
Dilution	IHC 1:1000-1:4000; WB 1:2000-1:10000; IF 1:200-1:1000; ELISA 1:5000-1:20000; IP 1:50-1:200; Note: For IHC, we suggest antigen retrieval with TE buffer pH 9.0
Concentration	0.5 mg/ml
Purity	≥90%
Storage Stability	-15° C to -25° C/1 year(Do not lower than -25° C)
Synonyms	Cadherin-1 ; CAM 120/80 ; Epithelial cadherin ; E-cadherin ; Uvomorulin ; CD324 ; Cadherin-2 ; CDw325 ; Neural cadherin ; N-cadherin1 Publication ; CD325 ; Cadherin-3 ; Placental cadherin ; P-cadherin ; Cadherin-4 ; Retinal cadherin ; R-CAD ; R-cadherin ; Cadherin-6 ; Kidney cadherin ; K-cadherin ; CDH6 ;
Observed Band	130kD
Calculated Molecular Weight	100kD
Cell Pathway	Membranous
Tissue Specificity	Non-neural epithelial tissues.
Function	
Background	Cadherin is a kind of adhesion protein which belongs to a transmembrane glycoprotein superfamily. It plays an important role in structural integrity of epithelia. This antibody can detect many isotypes of cadherin.
matters needing attention	Avoid repeated freezing and thawing!

杭州臻优品生物科技有限公司

热销产品:

蛋白、一抗、抗体对、ELISA试剂盒、生化试剂盒
CCK8试剂盒、QPCR检测试剂盒

检测服务:

ELISA检测及定制服务 | 生化检测 | PCR、QPCR检测 | WB检测
ICO-IP检测 | 切片 | 染色 | 免疫组化 | 免疫荧光 | 透射电镜全套
| 宏基因组、转录组、基因组、蛋白组、代谢组测序



关注官网

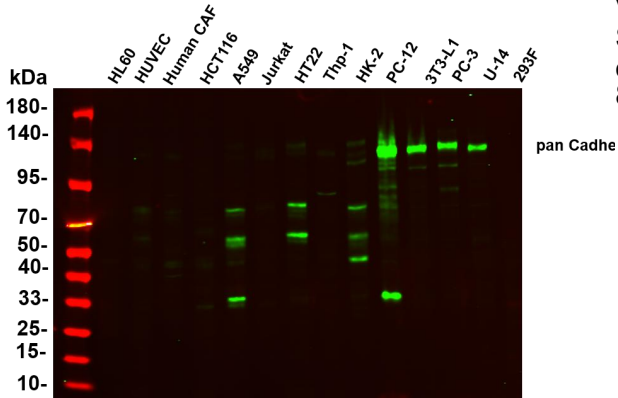


关注客服

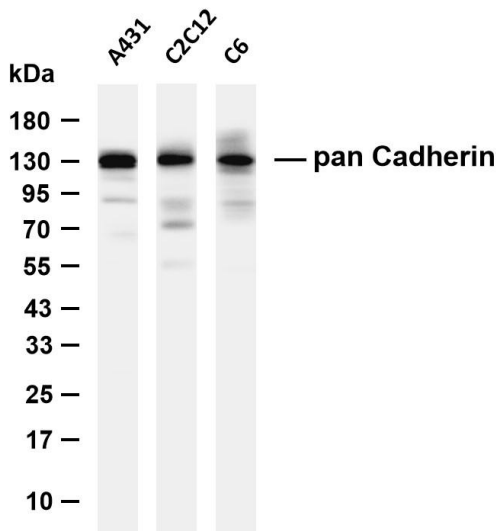


Usage suggestions

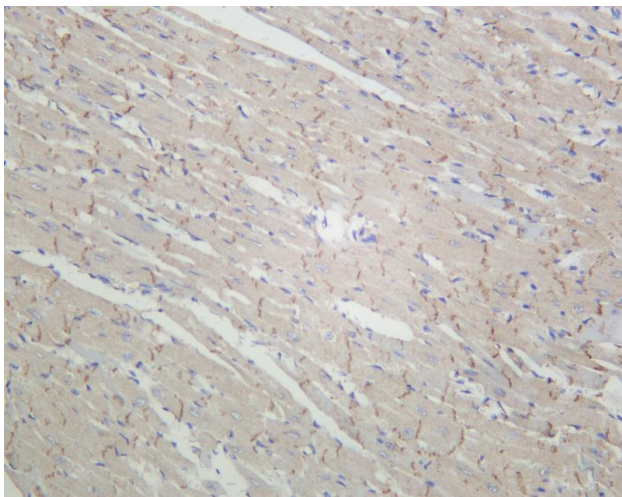
This product can be used in immunological reaction related experiments. For more information, please consult technical personnel.



Various whole cell lysates were separated by 4-20% SDS-PAGE, and the primary antibody was used at 4°C, over night with a 1:5000 dilution. The Dylight 800-conjugated Goat anti-Rabbit antibody

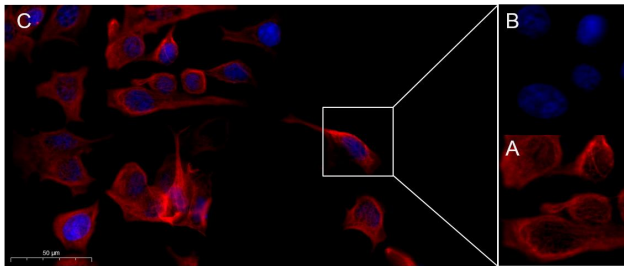


Various whole cell lysates were separated by 4-20% SDS-PAGE, and the membrane was blotted with anti-pan Cadherin antibody. The HRP-conjugated Goat anti-Rabbit IgG (H + L) antibody was used to detect the antibody. Lane 1: A431 Lane 2: C2C12 Lane 3: C6 Predicted band size: 100kDa Observed band size: 130kDa



Mouse cardiac muscle was stained with anti-pan Cadherin Rabbit antibody





Immunofluorescence analysis of MCF7 . Picture A: pan Cadherin Rabbit mAb (red). Picture B: DAPI (blue). Picture C: Merge of A+B

杭州臻优品生物科技有限公司

热销产品:

蛋白、一抗、抗体对、ELISA试剂盒、生化试剂盒
CCK8试剂盒、QPCR检测试剂盒

检测服务:

ELISA检测及定制服务 | 生化检测 | PCR、QPCR检测 | WB检测
ICO-IP检测 | 切片 | 染色 | 免疫组化 | 免疫荧光 | 透射电镜全套
| 宏基因组、转录组、基因组、蛋白组、代谢组测序



关注官网



关注客服