



CKS2 Rabbit mAb

Catalog No	YP-rAb-17449
Isotype	IgG
Reactivity	Human,Mouse,Rat
Applications	WB,IHC
Gene Name	CKS2
Protein Name	Cyclin-dependent kinases regulatory subunit 2
Purification Process	Protein A
Specificity	Endogenous
Formulation	PBS, 50% glycerol, 0.05% Proclin 300, 0.05%BSA
Source	Monoclonal, Rabbit,IgG
Dilution	IHC 1:200-1:1000; WB 1:1000-1:5000; Note: For IHC, we suggest antigen retrieval with TE buffer pH 9.0
Concentration	0.5 mg/ml
Purity	≥90%
Storage Stability	-15° C to -25° C/1 year(Do not lower than -25° C)
Synonyms	CKS2 ; Cyclin-dependent kinases regulatory subunit 2 ; CKS-2
Observed Band	9kD
Calculated Molecular Weight	9kD
Cell Pathway	cyclin-dependent protein kinase holoenzyme complex,SCF ubiquitin ligase complex,
Tissue Specificity	Lung,
Function	Binds to the catalytic subunit of the cyclin dependent kinases and is essential for their biological function.,similarity:Belongs to the CKS family.,subunit:Forms an homo-hexamers that can probably bind six kinase subunits.,
Background	CDC28 protein kinase regulatory subunit 2(CKS2) Homo sapiens CKS2 protein binds to the catalytic subunit of the cyclin dependent kinases and is essential for their biological function. The CKS2 mRNA is found to be expressed in different patterns through the cell cycle in HeLa cells, which reflects specialized role for the encoded protein. [provided by RefSeq, Jul 2008],
matters needing attention	Avoid repeated freezing and thawing!

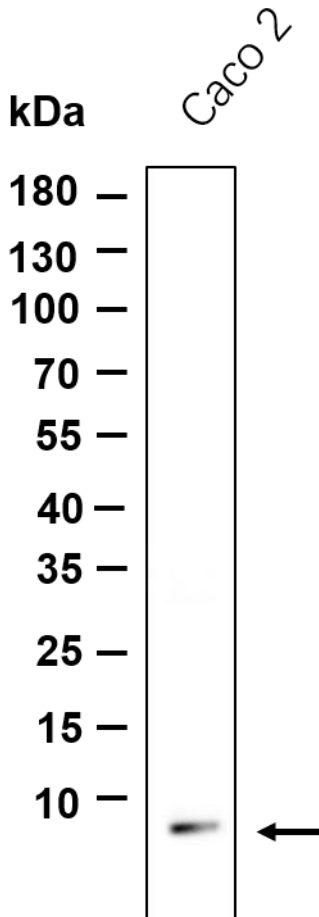




Usage suggestions

This product can be used in immunological reaction related experiments. For more information, please consult technical personnel.

Western blot analysis of lysates from Caco-2 cell, primary antibody was diluted at 1:1000, 4° over night, Dylight 800 secondary antibody was diluted at 1:10000, 37° 1hour.



杭州臻优品生物科技有限公司

热销产品:

蛋白、一抗、抗体对、ELISA试剂盒、生化试剂盒
CCK8试剂盒、QPCR检测试剂盒

检测服务:

ELISA检测及定制服务 | 生化检测 | PCR、QPCR检测 | WB检测
ICO-IP检测 | 切片 | 染色 | 免疫组化 | 免疫荧光 | 透射电镜全套
| 宏基因组、转录组、基因组、蛋白组、代谢组测序



关注官网



关注客服