



CLEC2B Rabbit mAb

Catalog No	YP-rAb-17447
Isotype	IgG
Reactivity	Human
Applications	WB,IHC,IF,ELISA
Gene Name	CLEC2B,AICL,CLECSF2,IFNRG1
Protein Name	C-type lectin domain family 2 member B (Activation-induced C-type lectin) (C-type lectin superfamily member 2) (IFN-alpha-2b-inducing-related protein 1)
Purification Process	Protein A
Specificity	Endogenous
Formulation	PBS, 50% glycerol, 0.05% Proclin 300, 0.05%BSA
Source	Monoclonal, Rabbit,IgG
Dilution	IHC 1:200-1:1000; WB 1:2000-1:10000; IF 1:200-1:1000; ELISA 1:5000-1:20000; Note: For IHC, we suggest antigen retrieval with TE buffer pH 9.0
Concentration	0.5 mg/ml
Purity	≥90%
Storage Stability	-15° C to -25° C/1 year(Do not lower than -25° C)
Synonyms	AICL CLECSF2 IFNRG1
Observed Band	16kD
Calculated Molecular Weight	16kD
Cell Pathway	SUBCELLULAR LOCATION: Cell membrane {ECO:0000269 PubMed:23929856, ECO:0000269 PubMed:29980609}; Single-pass type II membrane protein {ECO:0000305}. Golgi apparatus membrane {ECO:0000269 PubMed:23929856}. Note=Resting NK cells contain intracellular stores of CLEC2B associated with the Golgi complex. {ECO:0000269 PubMed:23929856}.
Tissue Specificity	TISSUE SPECIFICITY: Expressed preferentially in lymphoid tissues, and in most hematopoietic cell types.
Function	Membrane-bound protein expressed on myeloid cells which acts as a ligand to stimulate the activating receptor NKp80/KLRF1, expressed on the surface of natural killer (NK) cells. In turn, stimulates NK-cell cytotoxicity and cytokine production leading to the cytolysis of malignant CLEC2B-expressing myeloid cells. {ECO:0000269 PubMed:17057721, ECO:0000269 PubMed:18230726, ECO:0000269 PubMed:23929856}.
Background	Natural killer (NK) cells express multiple calcium-dependent (C-type) lectin-like receptors, such as CD94 (KLRD1; MIM 602894) and NKG2D (KLRC4; MIM 602893), that interact with major histocompatibility complex class I molecules and

杭州臻优品生物科技有限公司

热销产品:

蛋白、一抗、抗体对、ELISA试剂盒、生化试剂盒
CCK8试剂盒、QPCR检测试剂盒

检测服务:

ELISA检测及定制服务 | 生化检测 | PCR、QPCR检测 | WB检测
| CO-IP检测 | 切片 | 染色 | 免疫组化 | 免疫荧光 | 透射电镜全套
| 宏基因组、转录组、基因组、蛋白组、代谢组测序



关注官网



关注客服



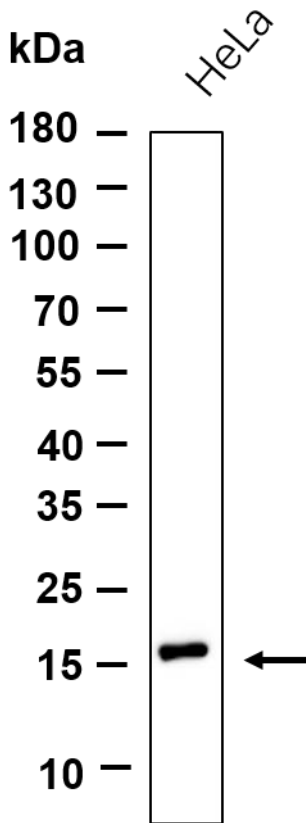
either inhibit or activate cytotoxicity and cytokine secretion. CLEC2 is a C-type lectin-like receptor expressed in myeloid cells and NK cells (Colonna et al., 2000 [PubMed 10671229]).[supplied by OMIM, Jan 2011]

matters needing attention

Avoid repeated freezing and thawing!

Usage suggestions

This product can be used in immunological reaction related experiments. For more information, please consult technical personnel.



Western blot analysis of lysates from HeLa cell, primary antibody was diluted at 1:1000, 4° over night, Dylight 800 secondary antibody was diluted at 1:10000, 37° 1hour.

