



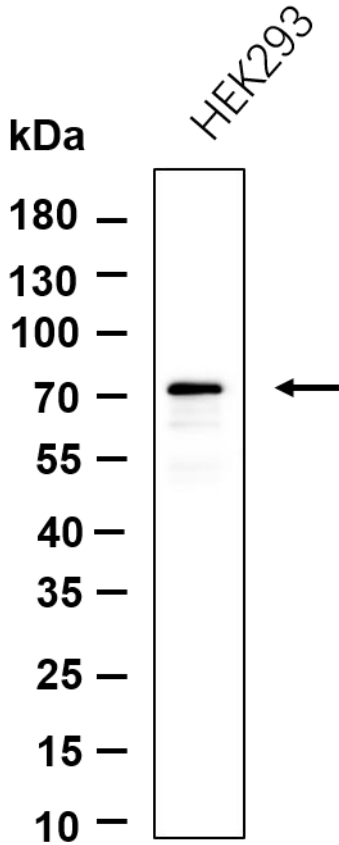
HSPA12A Rabbit mAb

Catalog No	YP-rAb-17430
Isotype	IgG
Reactivity	Human,Mouse,Rat
Applications	WB,IHC,IF,ELISA
Gene Name	HSPA12A KIAA0417
Protein Name	Heat shock 70 kDa protein 12A
Purification Process	Protein A
Specificity	Endogenous
Formulation	PBS, 50% glycerol, 0.05% Proclin 300, 0.05%BSA
Source	Monoclonal, Rabbit,IgG
Dilution	IHC 1:200-1:1000; WB 1:2000-1:10000; IF 1:200-1:1000; ELISA 1:5000-1:20000; Note: For IHC, we suggest antigen retrieval with TE buffer pH 9.0
Concentration	0.5 mg/ml
Purity	≥90%
Storage Stability	-15° C to -25° C/1 year(Do not lower than -25° C)
Synonyms	
Observed Band	74kD
Calculated Molecular Weight	74kD
Cell Pathway	Cytoplasm . Nucleus .
Tissue Specificity	Widely expressed with highest levels in brain, kidney and muscle.
Function	similarity:Belongs to the heat shock protein 70 family.,tissue specificity:Widely expressed with highest levels in brain, kidney and muscle.,
Background	similarity:Belongs to the heat shock protein 70 family.,tissue specificity:Widely expressed with highest levels in brain, kidney and muscle.,
matters needing attention	Avoid repeated freezing and thawing!
Usage suggestions	This product can be used in immunological reaction related experiments. For more information, please consult technical personnel.





Western blot analysis of lysates from HEK293 cell, primary antibody was diluted at 1:1000, 4° over night, Dylight 800 secondary antibody was diluted at 1:10000, 37° 1hour.



杭州臻优品生物科技有限公司

热销产品:

蛋白、一抗、抗体对、ELISA试剂盒、生化试剂盒
CCK8试剂盒、QPCR检测试剂盒

检测服务:

ELISA检测及定制服务 | 生化检测 | PCR、QPCR检测 | WB检测
ICO-IP检测 | 切片 | 染色 | 免疫组化 | 免疫荧光 | 透射电镜全套
| 宏基因组、转录组、基因组、蛋白组、代谢组测序



关注官网



关注客服