



# OXGR1 Rabbit mAb

<b>Catalog No</b>	YP-rAb-17426
<b>Isotype</b>	IgG
<b>Reactivity</b>	Human,Mouse,Rat
<b>Applications</b>	WB,IF,ELISA
<b>Gene Name</b>	OXGR1 GPR80 GPR99 P2RY15 P2Y15
<b>Protein Name</b>	2-oxoglutarate receptor 1
<b>Purification Process</b>	Protein A
<b>Specificity</b>	Endogenous
<b>Formulation</b>	PBS, 50% glycerol, 0.05% Proclin 300, 0.05%BSA
<b>Source</b>	Monoclonal, Rabbit,IgG
<b>Dilution</b>	WB 1:1000-1:5000; IF 1:200-1:1000; ELISA 1:5000-1:20000;
<b>Concentration</b>	0.5 mg/ml
<b>Purity</b>	≥90%
<b>Storage Stability</b>	-15° C to -25° C/1 year(Do not lower than -25° C)
<b>Synonyms</b>	2-oxoglutarate receptor 1 ; Alpha-ketoglutarate receptor 1 ; G-protein coupled receptor 80 ; G-protein coupled receptor 99 ; P2Y purinoceptor 15 ; P2Y15 ; P2Y-like GPCR ; P2Y-like nucleotide receptor ;
<b>Observed Band</b>	37kD
<b>Calculated Molecular Weight</b>	37kD
<b>Cell Pathway</b>	Cell membrane; Multi-pass membrane protein.
<b>Tissue Specificity</b>	Detected in kidney and, to a lower extent, in placenta. Not detected in brain tissues including the frontal cortex, caudate putamen, thalamus, hypothalamus, hippocampus or pons.
<b>Function</b>	Caution:Was originally (Ref.5) thought to be a P2Y receptor.,Function:Receptor for alpha-ketoglutarate. Seems to act exclusively through a G(q)-mediated pathway.,similarity:Belongs to the G-protein coupled receptor 1 family.,tissue specificity:Detected in kidney and, to a lower extend, in placenta. Not detected in brain tissues including the frontal cortex, caudate putamen, thalamus, hypothalamus, hippocampus or pons.,
<b>Background</b>	This gene encodes a G protein-coupled receptor (GPCR) that belongs to the oxoglutarate receptor family within the GPCR superfamily. The encoded protein is activated by the citric acid intermediate, oxoglutarate, as well as several cysteinyl





leukotrienes, including leukotrienes E4, C4 and D4, which are implicated in many inflammatory disorders. In mice, a knock-out of this gene leads to middle ear inflammation, changes in the mucosal epithelium, and an increase in fluid behind the eardrum, and is associated with hearing loss. Alternative splicing results in multiple transcript variants. [provided by RefSeq, Oct 2016],

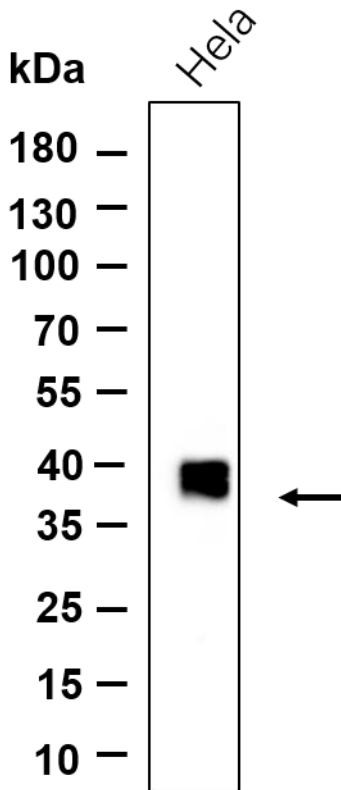
**matters needing attention**

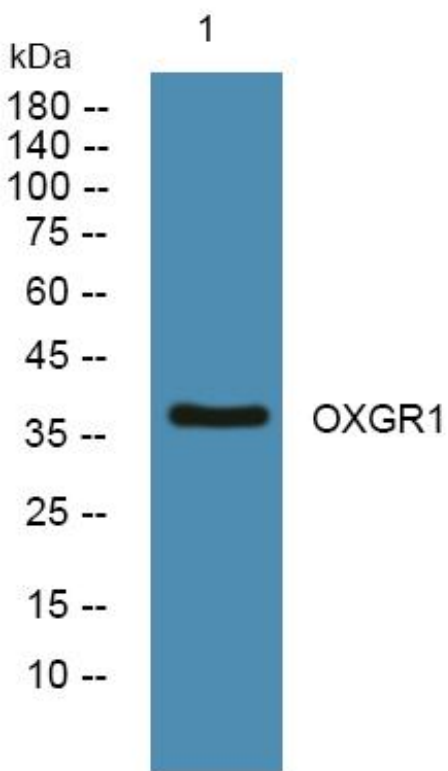
Avoid repeated freezing and thawing!

**Usage suggestions**

This product can be used in immunological reaction related experiments. For more information, please consult technical personnel.

Western blot analysis of lysates from HeLa cell, primary antibody was diluted at 1:1000, 4° over night, Dylight 800 secondary antibody was diluted at 1:10000, 37° 1hour.





Western blot analysis of lysates from K562 cells, primary antibody was diluted at 1:1000, 4° over night

## 杭州臻优品生物科技有限公司

### 热销产品:

蛋白、一抗、抗体对、ELISA试剂盒、生化试剂盒  
CCK8试剂盒、QPCR检测试剂盒

### 检测服务:

ELISA检测及定制服务 | 生化检测 | PCR、QPCR检测 | WB检测  
ICO-IP检测 | 切片 | 染色 | 免疫组化 | 免疫荧光 | 透射电镜全套  
| 宏基因组、转录组、基因组、蛋白组、代谢组测序



关注官网



关注客服