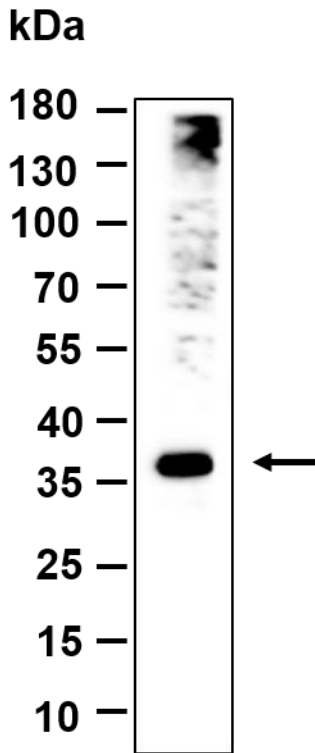




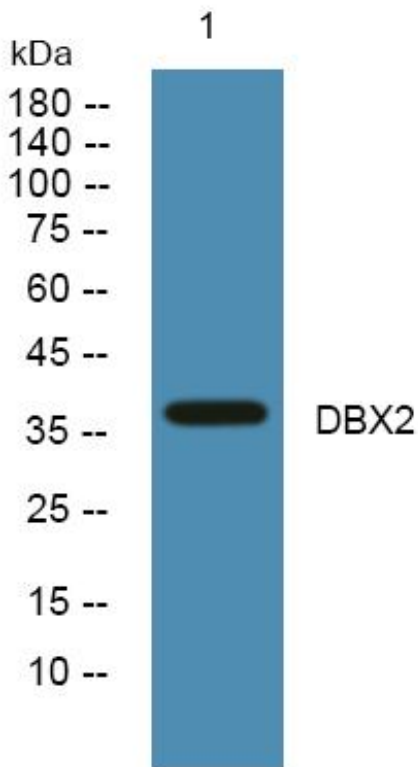
# DBX2 Rabbit mAb

<b>Catalog No</b>	YP-rAb-17420
<b>Isotype</b>	IgG
<b>Reactivity</b>	Human,Mouse,Rat
<b>Applications</b>	WB
<b>Gene Name</b>	DBX2
<b>Protein Name</b>	Homeobox protein DBX2
<b>Purification Process</b>	Protein A
<b>Specificity</b>	Endogenous
<b>Formulation</b>	PBS, 50% glycerol, 0.05% Proclin 300, 0.05%BSA
<b>Source</b>	Monoclonal, Rabbit,IgG
<b>Dilution</b>	WB 1:1000-1:5000;
<b>Concentration</b>	0.5 mg/ml
<b>Purity</b>	≥90%
<b>Storage Stability</b>	-15° C to -25° C/1 year(Do not lower than -25° C)
<b>Synonyms</b>	Developing brain homeobox protein 2
<b>Observed Band</b>	37kD
<b>Calculated Molecular Weight</b>	37kD
<b>Cell Pathway</b>	Nucleus .
<b>Tissue Specificity</b>	
<b>Function</b>	similarity:Belongs to the H2.0 homeobox family.,similarity:Contains 1 homeobox DNA-binding domain.,
<b>Background</b>	similarity:Belongs to the H2.0 homeobox family.,similarity:Contains 1 homeobox DNA-binding domain.,
<b>matters needing attention</b>	Avoid repeated freezing and thawing!
<b>Usage suggestions</b>	This product can be used in immunological reaction related experiments. For more information, please consult technical personnel.





Western blot analysis of lysates from HepG2 cell, primary antibody was diluted at 1:1000, 4° over night, Dylight 800 secondary antibody was diluted at 1:10000, 37° 1hour.



Western blot analysis of lysates from K562 cells, primary antibody was diluted at 1:1000, 4° over night

