



# LGALS14 Rabbit mAb

<b>Catalog No</b>	YP-rAb-17416
<b>Isotype</b>	IgG
<b>Reactivity</b>	Human,Mouse
<b>Applications</b>	WB,IF,ELISA
<b>Gene Name</b>	LGALS14 PPL13
<b>Protein Name</b>	Placental protein 13-like (Charcot-Leyden crystal protein 2) (CLC2) (Galectin-14) (Gal-14)
<b>Purification Process</b>	Protein A
<b>Specificity</b>	Endogenous
<b>Formulation</b>	PBS, 50% glycerol, 0.05% Proclin 300, 0.05%BSA
<b>Source</b>	Monoclonal, Rabbit,IgG
<b>Dilution</b>	WB 1:1000-1:5000; IF 1:200-1:1000; ELISA 1:5000-1:20000;
<b>Concentration</b>	0.5 mg/ml
<b>Purity</b>	≥90%
<b>Storage Stability</b>	-15° C to -25° C/1 year(Do not lower than -25° C)
<b>Synonyms</b>	
<b>Observed Band</b>	15kD
<b>Calculated Molecular Weight</b>	15kD
<b>Cell Pathway</b>	Nucleus .
<b>Tissue Specificity</b>	Highly expressed in placenta.
<b>Function</b>	
<b>Background</b>	This gene is predominantly expressed in placenta. The encoded protein belongs to the galectin (galaptin/S-lectin) family. The members of galectin family contain one or two carbohydrate recognition domains, which can bind beta-galactoside. Two alternatively spliced transcript variants encoding distinct isoforms have been observed. [provided by RefSeq, Jul 2008]
<b>matters needing attention</b>	Avoid repeated freezing and thawing!

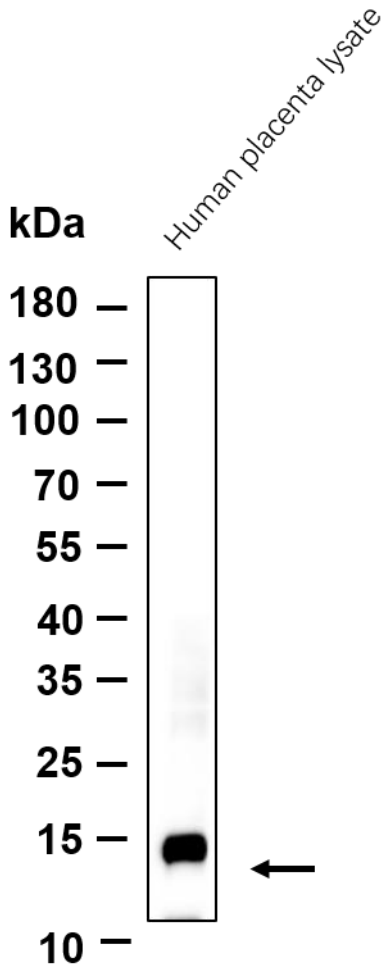




### Usage suggestions

This product can be used in immunological reaction related experiments. For more information, please consult technical personnel.

Western blot analysis of lysates from Human placenta lysate cell, primary antibody was diluted at 1:1000, 4° over night, Dylight 800 secondary antibody was diluted at 1:10000, 37° 1hour.



## 杭州臻优品生物科技有限公司

### 热销产品:

蛋白、一抗、抗体对、ELISA试剂盒、生化试剂盒  
CCK8试剂盒、QPCR检测试剂盒

### 检测服务:

ELISA检测及定制服务 | 生化检测 | PCR、QPCR检测 | WB检测  
ICO-IP检测 | 切片 | 染色 | 免疫组化 | 免疫荧光 | 透射电镜全套  
| 宏基因组、转录组、基因组、蛋白组、代谢组测序



关注官网



关注客服