



# Drosha Rabbit mAb

<b>Catalog No</b>	YP-rAb-17410
<b>Isotype</b>	IgG
<b>Reactivity</b>	Human,Mouse,Rat
<b>Applications</b>	WB,IHC,IF,IP,ELISA
<b>Gene Name</b>	DROSHA
<b>Protein Name</b>	Ribonuclease 3
<b>Purification Process</b>	Protein A
<b>Specificity</b>	Endogenous
<b>Formulation</b>	PBS, 50% glycerol, 0.05% Proclin 300, 0.05%BSA
<b>Source</b>	Monoclonal, Rabbit,IgG
<b>Dilution</b>	IHC 1:200-1:1000; WB 1:2000-1:10000; IF 1:200-1:1000; ELISA 1:5000-1:20000; IP 1:50-1:200; Note: For IHC, we suggest antigen retrieval with TE buffer pH 9.0
<b>Concentration</b>	0.5 mg/ml
<b>Purity</b>	≥90%
<b>Storage Stability</b>	-15° C to -25° C/1 year(Do not lower than -25° C)
<b>Synonyms</b>	DROSHA ; RN3 ; RNASE3L ; RNASEN ; Ribonuclease 3 ; Protein Drosha ; Ribonuclease III ; RNase III ; p241
<b>Observed Band</b>	159kD
<b>Calculated Molecular Weight</b>	159kD
<b>Cell Pathway</b>	Nucleus . Nucleus, nucleolus . A fraction is translocated to the nucleolus during the S phase of the cell cycle. Localized in GW bodies (GWBs), also known as P-bodies. .
<b>Tissue Specificity</b>	Ubiquitous.
<b>Function</b>	Catalytic activity:Endonucleolytic cleavage to 5'-phosphomonoester.,cofactor:Magnesium or manganese.,Function:Executes the initial step of microRNA (miRNA) processing in the nucleus, that is cleavage of pri-miRNA to release pre-miRNA. Involved in pre-rRNA processing. Cleaves double-strand RNA and does not cleave single-strand RNA.,online information:The dark side of RNA -Issue 87 of October 2007,similarity:Contains 1 DRBM (double-stranded RNA-binding) domain.,similarity:Contains 2 RNase III domains.,subcellular location:A fraction is translocated to the nucleolus during the S phase of the cell cycle.,subunit:Interacts with Sp1.,tissue specificity:Ubiquitous.,





## Background

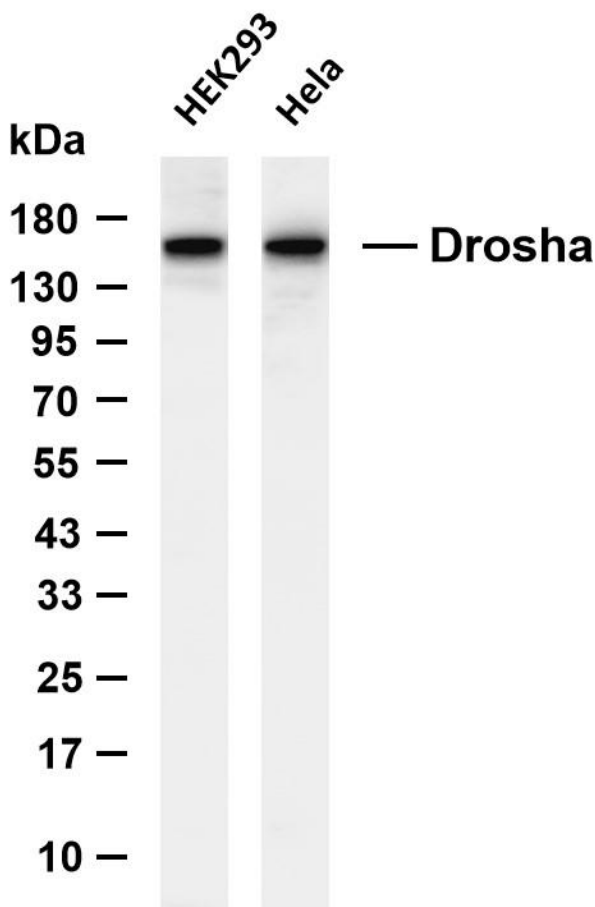
drosha ribonuclease III(DROSHA) Homo sapiens This gene encodes a ribonuclease (RNase) III double-stranded RNA-specific ribonuclease and subunit of the microprocessor protein complex, which catalyzes the initial processing step of microRNA (miRNA) synthesis. The encoded protein cleaves the stem loop structure from the primary microRNA (pri-miRNA) in the nucleus, yielding the precursor miRNA (pre-miRNA), which is then exported to the cytoplasm for further processing. In a human cell line lacking a functional copy of this gene, canonical miRNA synthesis is reduced. Somatic mutations in this gene have been observed in human patients with kidney cancer. [provided by RefSeq, Sep 2016],

## matters needing attention

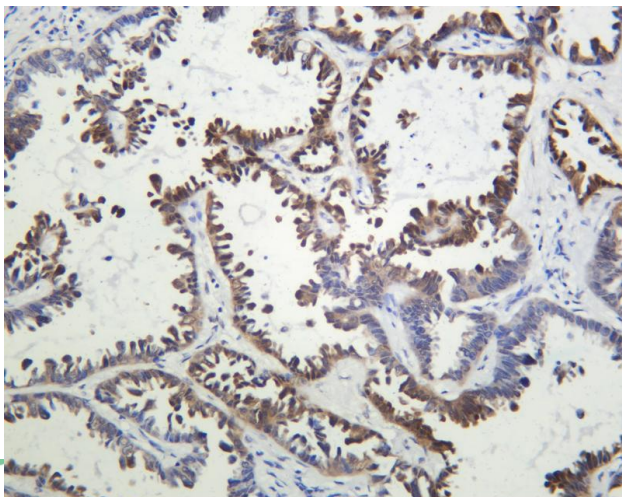
Avoid repeated freezing and thawing!

## Usage suggestions

This product can be used in immunological reaction related experiments. For more information, please consult technical personnel.



Various whole cell lysates were separated by 4-20% SDS-PAGE, and the membrane was blotted with anti-Droscha antibody. The HRP-conjugated Goat anti-Rabbit IgG (H + L) antibody was used to detect the antibody. Lane 1: HEK293 Lane 2: HeLa Predicted band size: 159kDa Observed band size: 159kDa



Human lung adenocarcinoma was stained with anti-Droscha Rabbit antibody

### 热销产品:

蛋白、一抗、抗体对、ELISA试剂盒、生化试剂盒  
CCK8试剂盒、QPCR检测试剂盒

### 检测服务:

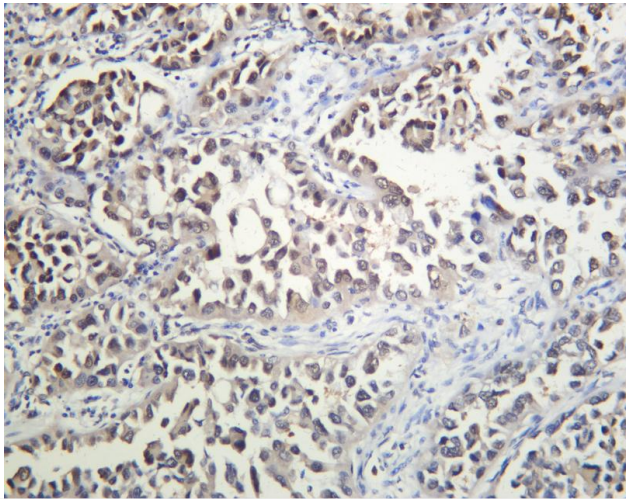
ELISA检测及定制服务 | 生化检测 | PCR、QPCR检测 | WB检测  
ICO-IP检测 | 切片 | 染色 | 免疫组化 | 免疫荧光 | 透射电镜全套  
| 宏基因组、转录组、基因组、蛋白组、代谢组测序



关注官网



关注客服



Human lung adenocarcinoma2 was stained with anti-Drosha Rabbit antibody

## 杭州臻优品生物科技有限公司

### 热销产品:

蛋白、一抗、抗体对、ELISA试剂盒、生化试剂盒  
CCK8试剂盒、QPCR检测试剂盒

### 检测服务:

ELISA检测及定制服务 | 生化检测 | PCR、QPCR检测 | WB检测  
ICO-IP检测 | 切片 | 染色 | 免疫组化 | 免疫荧光 | 透射电镜全套  
| 宏基因组、转录组、基因组、蛋白组、代谢组测序



关注官网



关注客服