



Krs-2 Rabbit mAb

Catalog No	YP-rAb-17407
Isotype	IgG
Reactivity	Human,Mouse,Rat
Applications	WB,IHC,IF,IP,ELISA
Gene Name	STK4
Protein Name	Serine/threonine-protein kinase 4
Purification Process	Protein A
Specificity	Endogenous
Formulation	PBS, 50% glycerol, 0.05% Proclin 300, 0.05%BSA
Source	Monoclonal, Rabbit,IgG
Dilution	IHC 1:200-1:1000; WB 1:2000-1:10000; IF 1:200-1:1000; ELISA 1:5000-1:20000; IP 1:50-1:200; Note: For IHC, we suggest antigen retrieval with TE buffer pH 9.0
Concentration	0.5 mg/ml
Purity	≥90%
Storage Stability	-15° C to -25° C/1 year(Do not lower than -25° C)
Synonyms	KRS1 ; MST2 ; Serine/threonine-protein kinase 3 ; Mammalian STE20-like protein kinase 2 ; MST-2 ; STE20-like kinase MST2 ; Serine/threonine-protein kinase Krs-1 ; STK4 ; KRS2 ; MST1 ; Serine/threonine-protein kinase 4 ; Mammalian STE20-like prot
Observed Band	56kD
Calculated Molecular Weight	56kD
Cell Pathway	Cytoplasm . Nucleus . The caspase-cleaved form cycles between nucleus and cytoplasm (PubMed:19525978, PubMed:11278283). Phosphorylation at Thr-117 leads to inhibition of nuclear translocation (PubMed:19525978). .
Tissue Specificity	Expressed at high levels in adult kidney, skeletal and placenta tissues and at very low levels in adult heart, lung and brain tissues.
Function	Catalytic activity:ATP + a protein = ADP + a phosphoprotein.,cofactor:Magnesium.,enzyme regulation:Inhibited by the C-terminal non-catalytic region. Activated by caspase-cleavage. Full activation also requires homodimerization and autophosphorylation of Thr-180, which are inhibited by the proto-oncogene product RAF1.,Function:Stress-activated, pro-apoptotic kinase which, following caspase-cleavage, enters the nucleus and induces chromatin condensation followed by internucleosomal DNA fragmentation. Phosphorylates NKX2-1 (By similarity). Phosphorylates and





activates LATS1 and LATS2.,similarity:Belongs to the protein kinase superfamily. STE Ser/Thr protein kinase family. STE20 subfamily.,similarity:Contains 1 protein kinase domain.,similarity:Contains 1 SARAH domain.,subcellular location:The caspase-cleaved form cycles between nucleus and cytoplasm.,subunit:Homodimer; mediated via the coiled-coil region. Interacts with NORE1, which inhibits autoactivation (By similarity). Interacts with and stabilizes SAV1. Interacts with RAF1, which prevents dimerization and phosphorylation. Interacts with RASSF1, which leads to enzyme activation.,tissue specificity:Expressed at high levels in adult kidney, skeletal and placenta tissues and at very low levels in adult heart, lung and brain tissues.,

Background

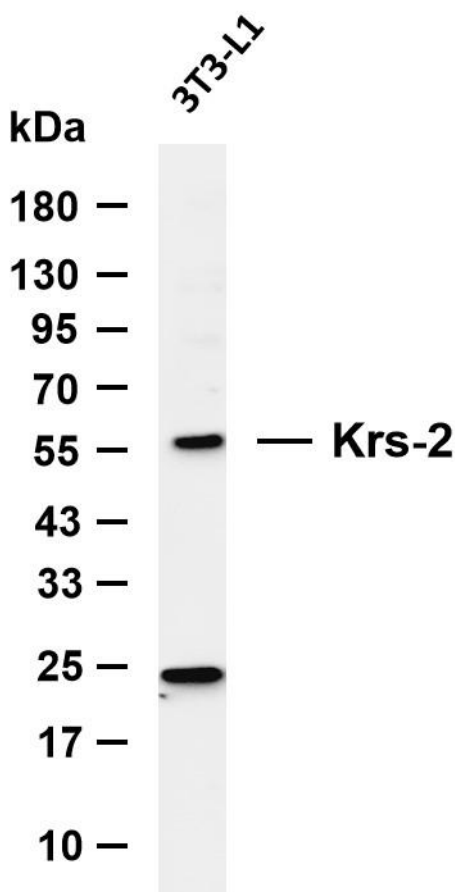
serine/threonine kinase 3(STK3) Homo sapiens This gene encodes a serine/threonine protein kinase activated by proapoptotic molecules indicating the encoded protein functions as a growth suppressor. Cleavage of the protein product by caspase removes the inhibitory C-terminal portion. The N-terminal portion is transported to the nucleus where it homodimerizes to form the active kinase which promotes the condensation of chromatin during apoptosis. Multiple transcript variants encoding different isoforms have been found for this gene. [provided by RefSeq, Jan 2012],

matters needing attention

Avoid repeated freezing and thawing!

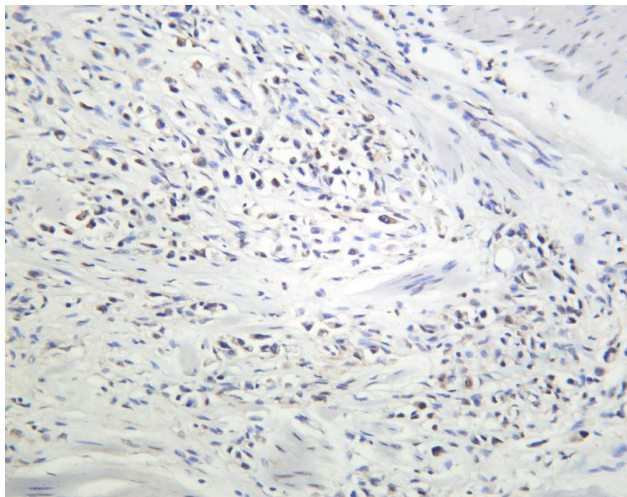
Usage suggestions

This product can be used in immunological reaction related experiments. For more information, please consult technical personnel.



Various whole cell lysates were separated by 4-20% SDS-PAGE, and the membrane was blotted with anti-Serine/threonine-protein kinase 4 antibody. The HRP-conjugated Goat anti-Rabbit IgG (H + L) antibody was used to detect the antibody. Lane 1: 3T3-L1
Predicted band size: 56kDa Observed band size: 56kDa





Human gastric carcinoma was stained with anti-K

杭州臻优品生物科技有限公司

热销产品:

蛋白、一抗、抗体对、ELISA试剂盒、生化试剂盒
CCK8试剂盒、QPCR检测试剂盒

检测服务:

ELISA检测及定制服务 | 生化检测 | PCR、QPCR检测 | WB检测
ICO-IP检测 | 切片 | 染色 | 免疫组化 | 免疫荧光 | 透射电镜全套
| 宏基因组、转录组、基因组、蛋白组、代谢组测序



关注官网



关注客服