



SNAI 1 Rabbit mAb

Catalog No	YP-rAb-17399
Isotype	IgG
Reactivity	Human,Mouse,Rat
Applications	WB,IF,IP,ELISA
Gene Name	SNAI1
Protein Name	Zinc finger protein SNAI1(snail)
Purification Process	Protein A
Specificity	Endogenous
Formulation	PBS, 50% glycerol, 0.05% Proclin 300, 0.05%BSA
Source	Monoclonal, Rabbit,IgG
Dilution	WB 1:2000-1:10000; IF 1:200-1:1000; ELISA 1:5000-1:20000; IP 1:50-1:200;
Concentration	0.5 mg/ml
Purity	≥90%
Storage Stability	-15° C to -25° C/1 year(Do not lower than -25° C)
Synonyms	SNAI1 ; SNAH ; Zinc finger protein SNAI1 ; Protein snail homolog 1 ; Protein sna
Observed Band	30kD
Calculated Molecular Weight	29kD
Cell Pathway	Nucleus . Cytoplasm . Once phosphorylated (probably on Ser-107, Ser-111, Ser-115 and Ser-119) it is exported from the nucleus to the cytoplasm where subsequent phosphorylation of the destruction motif and ubiquitination involving BTRC occurs. .
Tissue Specificity	Expressed in a variety of tissues with the highest expression in kidney. Expressed in mesenchymal and epithelial cell lines.
Function	Seems to be involved in embryonic mesoderm formation. Binds to 3 E-boxes of the E-cadherin gene promoter and represses its transcription.,similarity:Belongs to the snail C2H2-type zinc-finger protein family.,similarity:Contains 4 C2H2-type zinc fingers.,tissue specificity:Expressed in a variety of tissues with the highest expression in kidney.,
Background	snail family transcriptional repressor 1(SNAI1) Homo sapiens The Drosophila embryonic protein snail is a zinc finger transcriptional repressor which downregulates the expression of ectodermal genes within the mesoderm. The nuclear protein encoded by this gene is structurally similar to the Drosophila snail protein, and is also thought to be critical for mesoderm formation in the developing





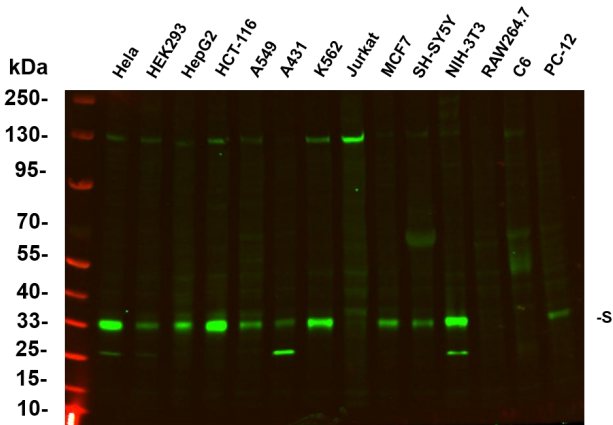
embryo. At least two variants of a similar processed pseudogene have been found on chromosome 2. [provided by RefSeq, Jul 2008],

matters needing attention

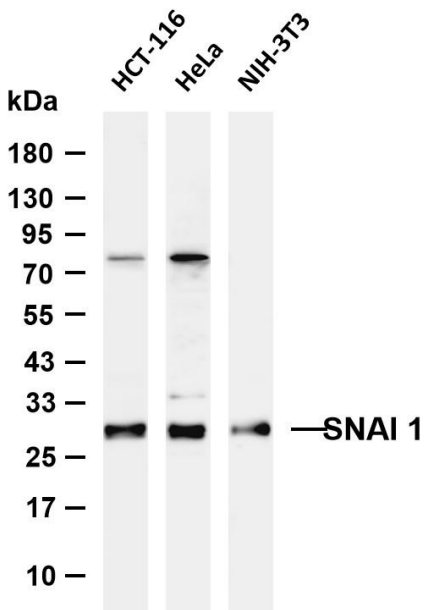
Avoid repeated freezing and thawing!

Usage suggestions

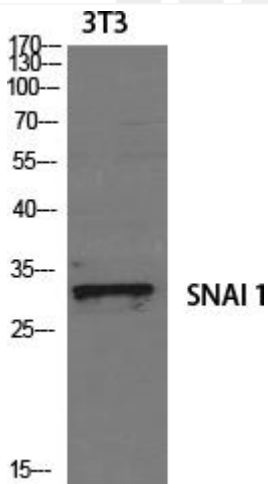
This product can be used in immunological reaction related experiments. For more information, please consult technical personnel.



Various whole cell lysates were separated by 4-20% SDS-PAGE, and the primary antibody was used at 4°C, over night with a 1:5000 dilution. The Dylight 800-conjugated Goat anti-Rabbit antibody



Various whole cell lysates were separated by 4-20% SDS-PAGE, and the membrane was blotted with anti-Snail antibody. The HRP-conjugated Goat anti-Rabbit IgG (H + L) antibody was used to detect the antibody. Lane 1: HCT-116 Lane 2: HeLa Lane 3: NIH-3T3 Predicted band size: 29kDa Observed band size: 29kDa



Western Blot analysis of various cells using SNAI 1 Antibody diluted at 1:1000 cells nucleus extracted by Minute TM Cytoplasmic and Nuclear Fractionation kit (SC-003, Inventbiotech, MN, USA).

杭州臻优品生物科技有限公司

热销产品：
蛋白、一抗、抗体对、ELISA试剂盒、生化试剂盒
CCK8试剂盒、QPCR检测试剂盒

检测服务：
ELISA检测及定制服务 | 生化检测 | PCR、QPCR检测 | WB检测
ICO-IP检测 | 切片 | 染色 | 免疫组化 | 免疫荧光 | 透射电镜全套
| 宏基因组、转录组、基因组、蛋白组、代谢组测序



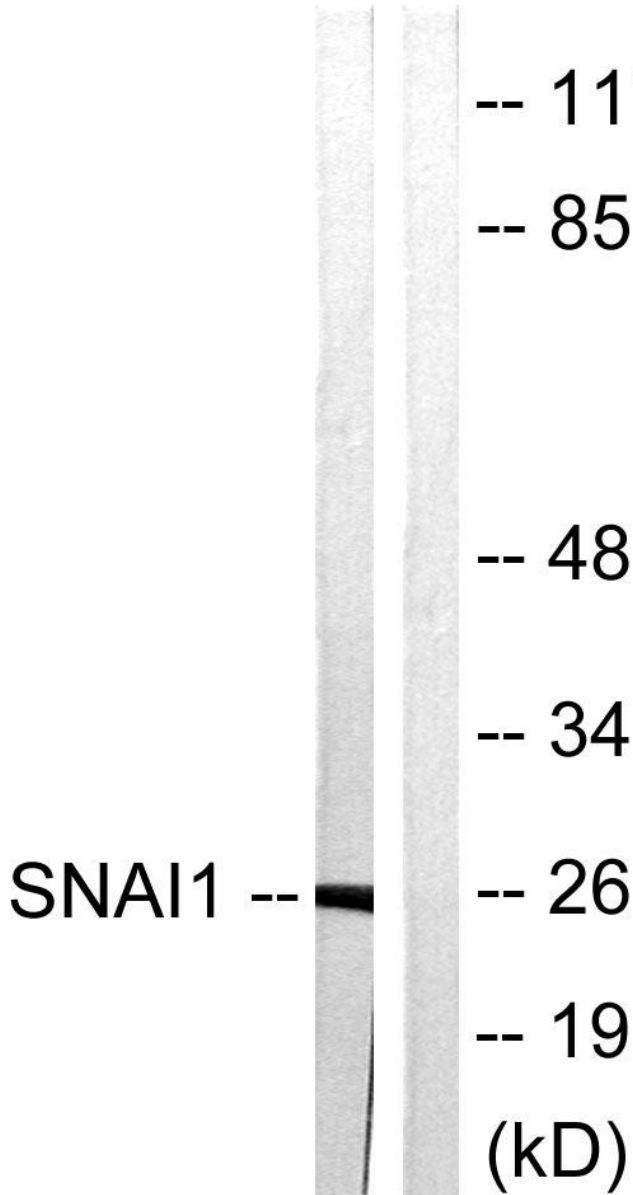
关注官网



关注客服



Western blot analysis of lysates from HT29 cells, using SNAI1 Antibody. The lane on the right is blocked with the synthesized peptide.



杭州臻优品生物科技有限公司

热销产品:

蛋白、一抗、抗体对、ELISA试剂盒、生化试剂盒
CCK8试剂盒、QPCR检测试剂盒

检测服务:

ELISA检测及定制服务 | 生化检测 | PCR、QPCR检测 | WB检测
ICO-IP检测 | 切片 | 染色 | 免疫组化 | 免疫荧光 | 透射电镜全套
| 宏基因组、转录组、基因组、蛋白组、代谢组测序



关注官网



关注客服