



Fyn Rabbit mAb

Catalog No	YP-rAb-17398
Isotype	IgG
Reactivity	Human,Mouse,Rat
Applications	WB,IF,ELISA
Gene Name	FYN
Protein Name	Tyrosine-protein kinase Fyn
Purification Process	Protein A
Specificity	Endogenous
Formulation	PBS, 50% glycerol, 0.05% Proclin 300, 0.05%BSA
Source	Monoclonal, Rabbit,IgG
Dilution	WB 1:2000-1:10000; IF 1:200-1:1000; ELISA 1:5000-1:20000;
Concentration	0.5 mg/ml
Purity	≥90%
Storage Stability	-15° C to -25° C/1 year(Do not lower than -25° C)
Synonyms	FYN ; Tyrosine-protein kinase Fyn ; Proto-oncogene Syn ; Proto-oncogene c-Fyn ; Src-like kinase ; SLK ; p59-Fyn
Observed Band	61kD
Calculated Molecular Weight	61kD
Cell Pathway	Cytoplasm. Nucleus. Cell membrane. Present and active in lipid rafts. Palmitoylation is crucial for proper trafficking.
Tissue Specificity	Isoform 1 is highly expressed in the brain. Isoform 2 is expressed in cells of hemopoietic lineages, especially T-lymphocytes.
Function	Catalytic activity:ATP + a [protein]-L-tyrosine = ADP + a [protein]-L-tyrosine phosphate.,cofactor:Manganese.,enzyme regulation:Inhibited by phosphorylation of Tyr-531 by leukocyte common antigen and activated by dephosphorylation of this site.,Function:Implicated in the control of cell growth. Plays a role in the regulation of intracellular calcium levels, with isoform 2 showing the greater ability to mobilize cytoplasmic calcium in comparison to isoform 1. Required in brain development and mature brain function with important roles in the regulation of axon growth, axon guidance, and neurite extension. Blocks axon outgrowth and attraction induced by NTN1 by phosphorylating its receptor DDC.,similarity:Belongs to the protein kinase superfamily. Tyr protein kinase family.,similarity:Belongs to the protein kinase superfamily. Tyr protein kinase family. SRC subfamily.,similarity:Contains 1 protein kinase





domain.,similarity:Contains 1 SH2 domain.,similarity:Contains 1 SH3 domain.,subcellular location:Present and active in lipid rafts. Present in cell body and along the process of mature and developing oligodendrocytes.,subunit:Associates through its SH3 domain, to the p85 subunit of phosphatidylinositol 3-kinase. Interacts with the FYN-binding protein (FYB). Interacts with phosphorylated TOM1L1. Interacts with CD79A upon activation of the B-cell antigen receptor which increases FYN activity (By similarity). Interacts with PAG1. Interacts (via SH3 domain) with PRMT8. Interacts with SH2D1A and SLAMF1. Interacts (via SH3 domain) with HEV ORF3 protein.,tissue specificity:Isoform 1 is highly expressed in the brain, isoform 2 is expressed in cells of hemopoietic lineages, especially T lymphocytes.,

Background

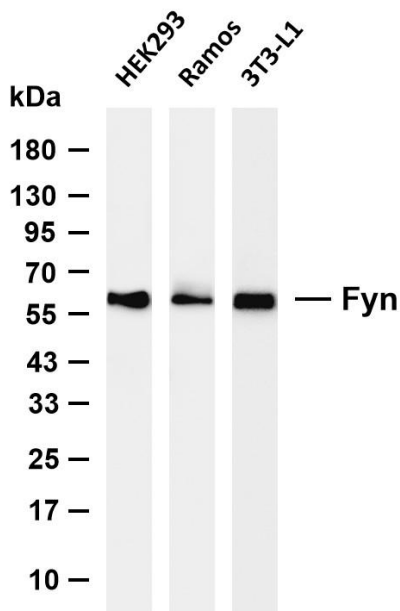
This gene is a member of the protein-tyrosine kinase oncogene family. It encodes a membrane-associated tyrosine kinase that has been implicated in the control of cell growth. The protein associates with the p85 subunit of phosphatidylinositol 3-kinase and interacts with the fyn-binding protein. Alternatively spliced transcript variants encoding distinct isoforms exist. [provided by RefSeq, Jul 2008],

matters needing attention

Avoid repeated freezing and thawing!

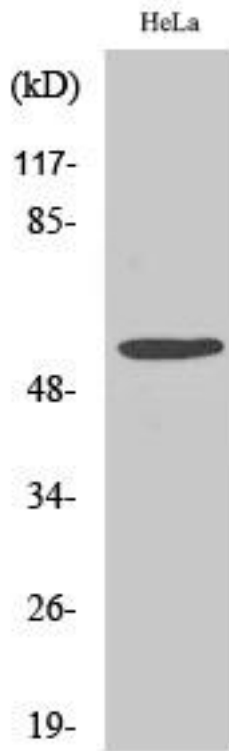
Usage suggestions

This product can be used in immunological reaction related experiments. For more information, please consult technical personnel.

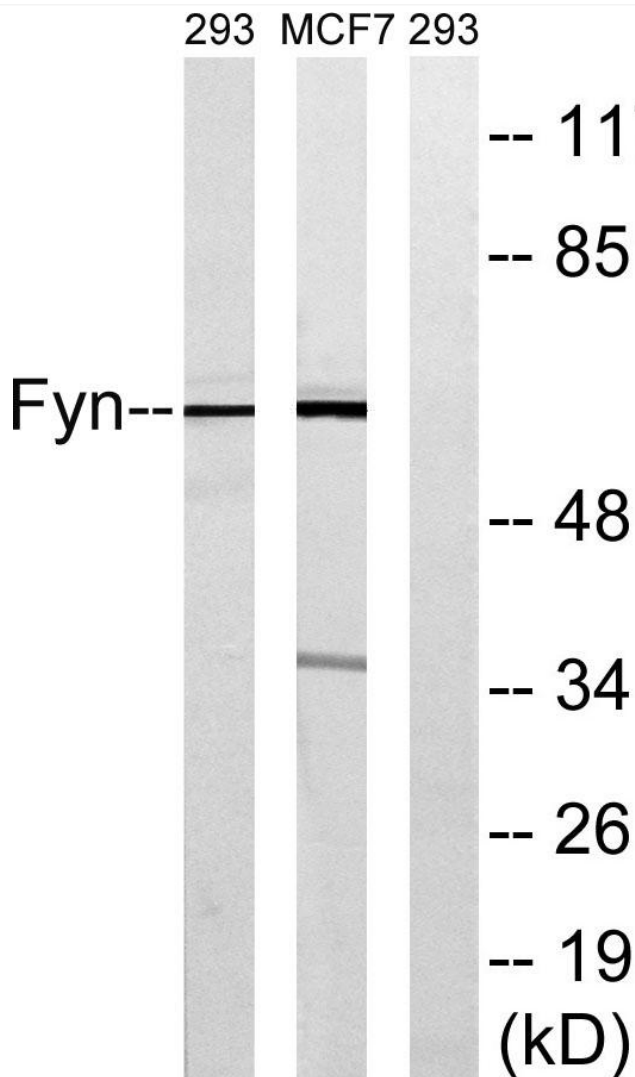


Various whole cell lysates were separated by 4-20% SDS-PAGE, and the membrane was blotted with anti-Fyn antibody. The HRP-conjugated Goat anti-Rabbit IgG (H + L) antibody was used to detect the antibody. Lane 1: HEK293 Lane 2: Ramos Lane 3: 3T3-L1 Predicted band size: 61kDa Observed band size: 61kDa





Western blot analysis of Hela cells using Fyn Antibody diluted at 1:2000



Western blot analysis of lysates from MCF-7 and 293 cells, using Fyn Antibody. The lane on the right is blocked with the synthesized peptide.

杭州臻优品生物科技有限公司

热销产品：
蛋白、一抗、抗体对、ELISA试剂盒、生化试剂盒
CCK8试剂盒、QPCR检测试剂盒

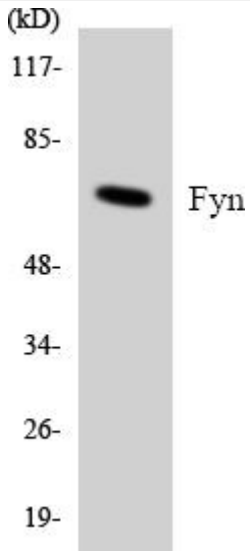
检测服务：
ELISA检测及定制服务 | 生化检测 | PCR、QPCR检测 | WB检测
ICO-IP检测 | 切片 | 染色 | 免疫组化 | 免疫荧光 | 透射电镜全套
| 宏基因组、转录组、基因组、蛋白组、代谢组测序



关注官网



关注客服



Western blot analysis of the lysates from K562 cells using Fyn antibody.

杭州臻优品生物科技有限公司

热销产品:

蛋白、一抗、抗体对、ELISA试剂盒、生化试剂盒
CCK8试剂盒、QPCR检测试剂盒

检测服务:

ELISA检测及定制服务 | 生化检测 | PCR、QPCR检测 | WB检测
ICO-IP检测 | 切片 | 染色 | 免疫组化 | 免疫荧光 | 透射电镜全套
| 宏基因组、转录组、基因组、蛋白组、代谢组测序



关注官网



关注客服