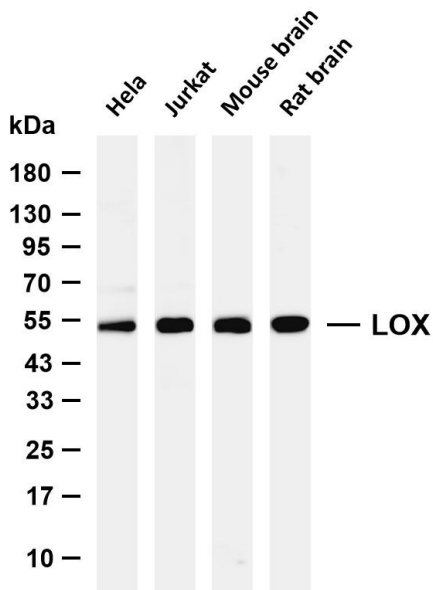




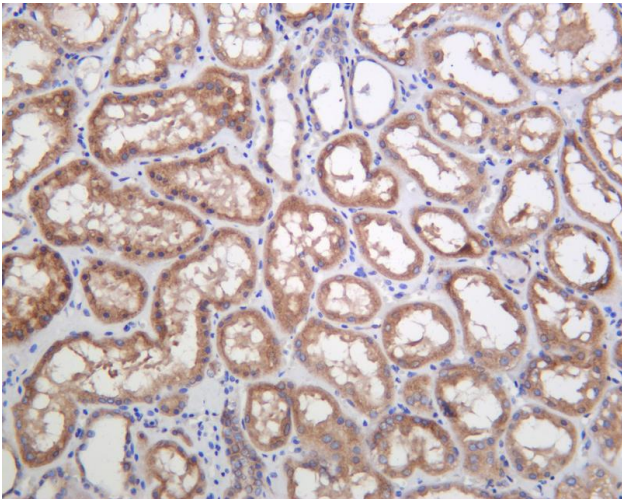
# LOX Rabbit mAb

<b>Catalog No</b>	YP-rAb-17397
<b>Isotype</b>	IgG
<b>Reactivity</b>	Human,Mouse,Rat
<b>Applications</b>	WB,IHC,IF,IP,ELISA
<b>Gene Name</b>	LOX
<b>Protein Name</b>	Protein-lysine 6-oxidase (Lysyl oxidase)
<b>Purification Process</b>	Protein A
<b>Specificity</b>	Endogenous
<b>Formulation</b>	PBS, 50% glycerol, 0.05% Proclin 300, 0.05%BSA
<b>Source</b>	Monoclonal, Rabbit,IgG
<b>Dilution</b>	IHC 1:200-1:1000; WB 1:2000-1:10000; IF 1:200-1:1000; ELISA 1:5000-1:20000; IP 1:50-1:200; Note: For IHC, we suggest antigen retrieval with TE buffer pH 9.0
<b>Concentration</b>	0.5 mg/ml
<b>Purity</b>	≥90%
<b>Storage Stability</b>	-15° C to -25° C/1 year(Do not lower than -25° C)
<b>Synonyms</b>	
<b>Observed Band</b>	54kD
<b>Calculated Molecular Weight</b>	47kD
<b>Cell Pathway</b>	Secreted . Secreted, extracellular space.
<b>Tissue Specificity</b>	Heart, placenta, skeletal muscle, kidney, lung and pancreas.
<b>Function</b>	
<b>Background</b>	
<b>matters needing attention</b>	Avoid repeated freezing and thawing!
<b>Usage suggestions</b>	This product can be used in immunological reaction related experiments. For more information, please consult technical personnel.

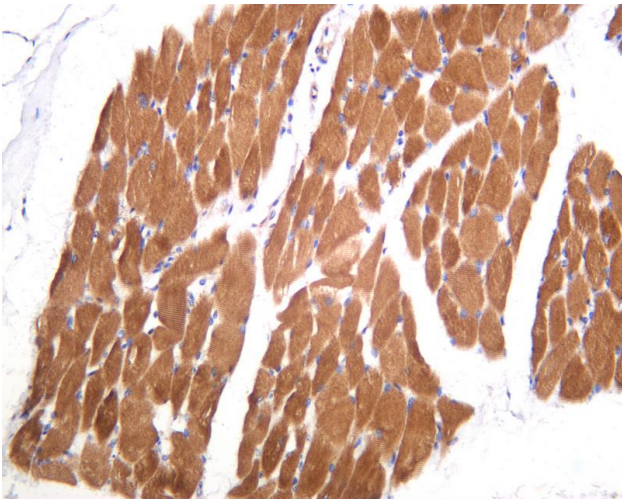




Various whole cell lysates were separated by 4-20% SDS-PAGE, and the membrane was blotted with anti-LOX antibody. The HRP-conjugated Goat anti-Rabbit IgG (H + L) antibody was used to detect the antibody. Lane 1: HeLa Lane 2: Jurkat Lane 3: Mouse brain Lane 4: Rat brain Predicted band size: 47kDa Observed band size: 54kDa



Human kidney was stained with anti-LOX Rabbit antibody



Human muscle was stained with anti-LOX Rabbit antibody

