



GCN2 Rabbit mAb

Catalog No	YP-rAb-17380
Isotype	IgG
Reactivity	Human,Mouse,Rat
Applications	WB,IHC,IF,ELISA
Gene Name	EIF2AK4
Protein Name	Eukaryotic translation initiation factor 2-alpha kinase 4
Purification Process	Protein A
Specificity	Endogenous
Formulation	PBS, 50% glycerol, 0.05% Proclin 300, 0.05%BSA
Source	Monoclonal, Rabbit,IgG
Dilution	IHC 1:100-1:500; WB 1:2000-1:10000; IF 1:200-1:1000; ELISA 1:5000-1:20000; Note: For IHC, we suggest antigen retrieval with TE buffer pH 9.0
Concentration	0.5 mg/ml
Purity	≥90%
Storage Stability	-15° C to -25° C/1 year(Do not lower than -25° C)
Synonyms	EIF2AK4 ; GCN2 ; KIAA1338 ; Eukaryotic translation initiation factor 2-alpha kinase 4 ; GCN2-like protein
Observed Band	187kD
Calculated Molecular Weight	187kD
Cell Pathway	Cytoplasm .
Tissue Specificity	Widely expressed (PubMed:10504407). Expressed in lung, smooth muscle cells and macrophages (PubMed:24292273).
Function	Catalytic activity:ATP + a protein = ADP + a phosphoprotein.,Domain:Kinase domain 1 is a degenerate kinase domain.,Domain:RWD domain is reported to interact with GCN1L1.,Function:Can phosphorylate the alpha subunit of EIF2 and may mediate translational control.,PTM:Autophosphorylated on threonine residues.,similarity:Belongs to the protein kinase superfamily. Ser/Thr protein kinase family. GCN2 subfamily.,similarity:Contains 1 RWD domain.,similarity:Contains 2 protein kinase domains.,tissue specificity:Widely expressed.,
Background	This gene encodes a member of a family of kinases that phosphorylate the alpha subunit of eukaryotic translation initiation factor-2 (EIF2), resulting in the downregulator of protein synthesis. The encoded protein responds to amino acid





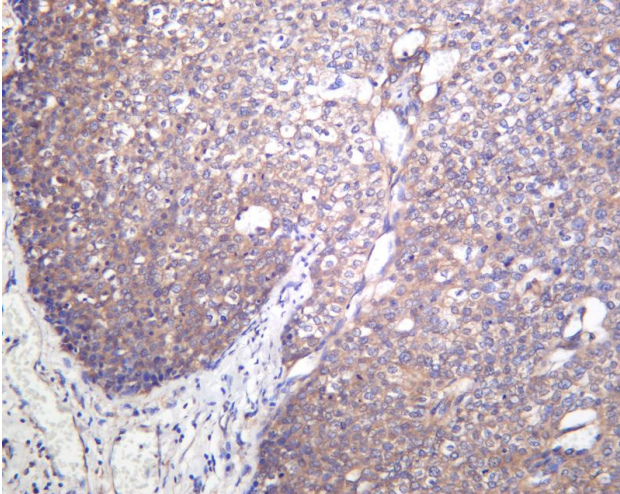
deprivation by binding uncharged transfer RNAs. It may also be activated by glucose deprivation and viral infection. Mutations in this gene have been found in individuals suffering from autosomal recessive pulmonary venoocclusive-disease-2. [provided by RefSeq, Mar 2014],

matters needing attention

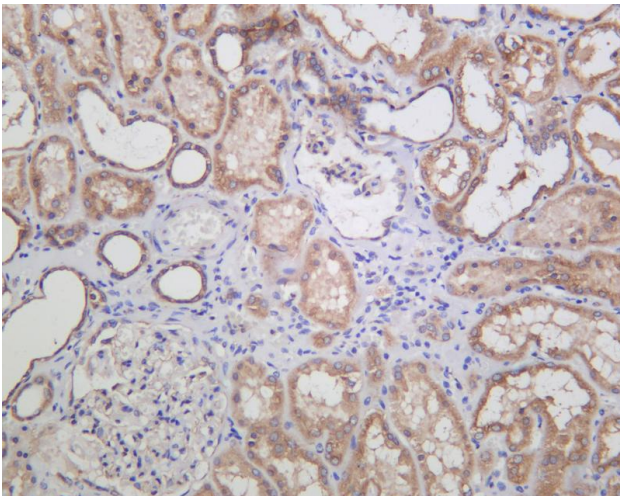
Avoid repeated freezing and thawing!

Usage suggestions

This product can be used in immunological reaction related experiments. For more information, please consult technical personnel.

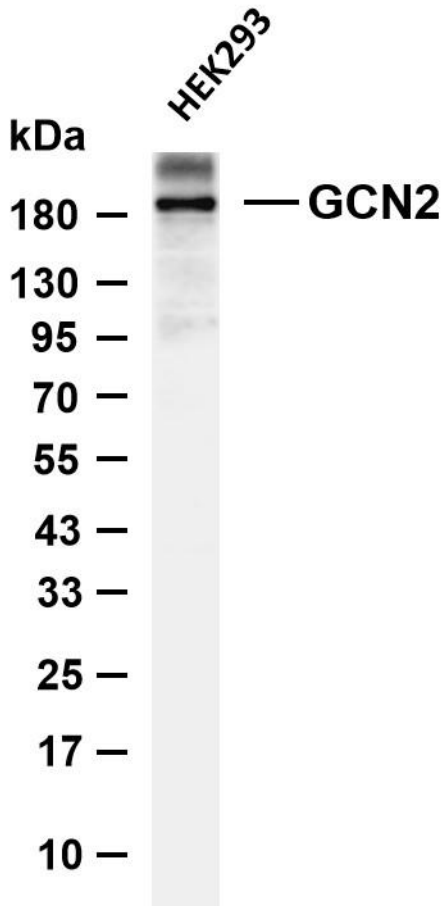


Human breast carcinoma was stained with anti-GCN2 Rabbit antibody



Human kidney was stained with anti-GCN2 Rabbit antibody





Various whole cell lysates were separated by 4-20% SDS-PAGE, and the membrane was blotted with anti-GCN2 antibody. The HRP-conjugated Goat anti-Rabbit IgG (H + L) antibody was used to detect the antibody. Lane 1: HEK293 Predicted band size: 187kDa Observed band size: 187kDa

