



Fos B Rabbit mAb

Catalog No	YP-rAb-17377
Isotype	IgG
Reactivity	Human,Mouse,Rat
Applications	WB,IHC,IF,IP,ELISA
Gene Name	FOSB
Protein Name	Protein fosB
Purification Process	Protein A
Specificity	Endogenous
Formulation	PBS, 50% glycerol, 0.05% Proclin 300, 0.05%BSA
Source	Monoclonal, Rabbit,IgG
Dilution	IHC 1:200-1:1000; WB 1:2000-1:10000; IF 1:200-1:1000; ELISA 1:5000-1:20000; IP 1:50-1:200; Note: For IHC, we suggest antigen retrieval with TE buffer pH 9.0
Concentration	0.5 mg/ml
Purity	≥90%
Storage Stability	-15° C to -25° C/1 year(Do not lower than -25° C)
Synonyms	FOSB ; G0S3 ; Protein fosB ; G0/G1 switch regulatory protein 3
Observed Band	38kD,48kD
Calculated Molecular Weight	36kD
Cell Pathway	Nucleus .
Tissue Specificity	[Isoform 11]: Expressed in the nucleus accumbens of the striatum (at protein level).
Function	FosB interacts with Jun proteins enhancing their DNA binding activity.,similarity:Belongs to the bZIP family.,similarity:Belongs to the bZIP family. Fos subfamily.,similarity:Contains 1 bZIP domain.,subunit:Heterodimer.,
Background	The Fos gene family consists of 4 members: FOS, FOSB, FOSL1, and FOSL2. These genes encode leucine zipper proteins that can dimerize with proteins of the JUN family, thereby forming the transcription factor complex AP-1. As such, the FOS proteins have been implicated as regulators of cell proliferation, differentiation, and transformation. Alternatively spliced transcript variants encoding different isoforms have been found for this gene. [provided by RefSeq, Jul 2008],



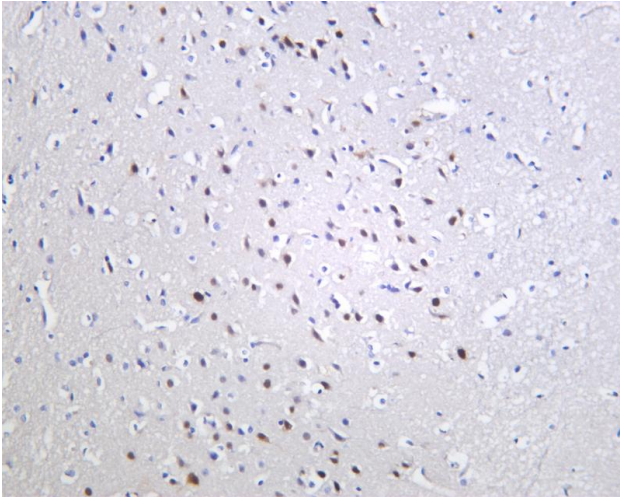


matters needing attention

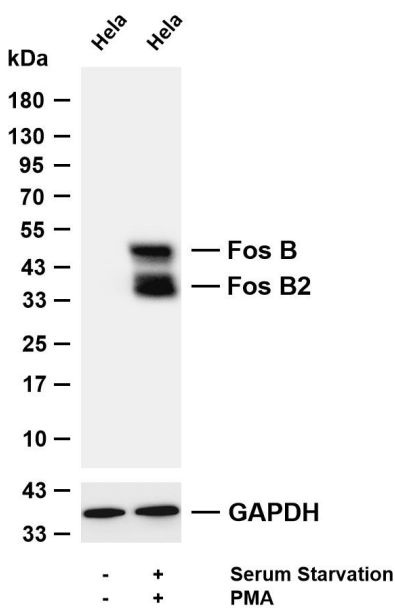
Avoid repeated freezing and thawing!

Usage suggestions

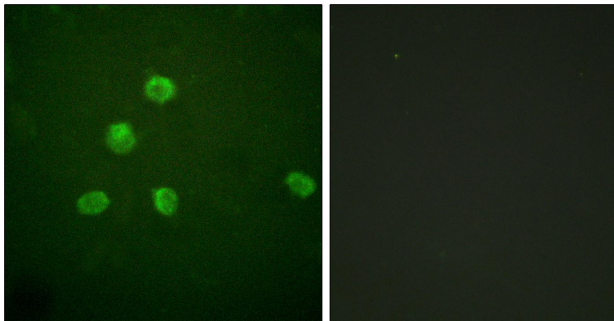
This product can be used in immunological reaction related experiments. For more information, please consult technical personnel.



Rat hippocampus was stained with anti-Fos B Rabbit antibody



Various whole cell lysates were separated by 4-20% SDS-PAGE, and the membrane was blotted with anti-Fos B antibody. The HRP-conjugated Goat anti-Rabbit IgG (H + L) antibody was used to detect the antibody. Lane 1: HeLa Lane 2: HeLa Predicted band size: 36kDa Observed band size: 48 kDa Fos B,38 kDa Fos B2



Immunofluorescence analysis of HepG2 cells, using FosB Antibody. The picture on the right is blocked with the synthesized peptide.

