



# PKD1 Rabbit mAb

<b>Catalog No</b>	YP-rAb-17376
<b>Isotype</b>	IgG
<b>Reactivity</b>	Human,Mouse,Rat
<b>Applications</b>	WB,IHC,IF,ELISA
<b>Gene Name</b>	PRKD1
<b>Protein Name</b>	Serine/threonine-protein kinase D1
<b>Purification Process</b>	Protein A
<b>Specificity</b>	Endogenous
<b>Formulation</b>	PBS, 50% glycerol, 0.05% Proclin 300, 0.05%BSA
<b>Source</b>	Monoclonal, Rabbit,IgG
<b>Dilution</b>	IHC 1:200-1:1000; WB 1:2000-1:10000; IF 1:200-1:1000; ELISA 1:5000-1:20000; Note: For IHC, we suggest antigen retrieval with TE buffer pH 9.0
<b>Concentration</b>	0.5 mg/ml
<b>Purity</b>	≥90%
<b>Storage Stability</b>	-15° C to -25° C/1 year(Do not lower than -25° C)
<b>Synonyms</b>	PRKD1 ; PKD ; PKD1 ; PRKCM ; Serine/threonine-protein kinase D1 ; Protein kinase C mu type ; Protein kinase D ; nPKC-D1 ; nPKC-mu
<b>Observed Band</b>	102kD
<b>Calculated Molecular Weight</b>	102kD
<b>Cell Pathway</b>	Cytoplasm . Cell membrane . Golgi apparatus, trans-Golgi network . Translocation to the cell membrane is required for kinase activation.
<b>Tissue Specificity</b>	Placenta,Testis,
<b>Function</b>	Catalytic activity:ATP + a protein = ADP + a phosphoprotein.,enzyme regulation:Activated by diacylglycerol and phorbol esters.,Function:Calcium-independent, phospholipid-dependent, serine- and threonine-specific kinase involved in resistance to oxidative stress.,PTM:Phosphorylation of Ser-738 and/or Ser-742 in activated PKD is mediated by transphosphorylation (By similarity). Phosphorylation of Tyr-463 mediated by the Src/Abl pathway in response to oxidative stress activates the kinase.,similarity:Belongs to the protein kinase superfamily.,similarity:Belongs to the protein kinase superfamily. CAMK Ser/Thr protein kinase family. PKD subfamily.,similarity:Contains 1 PH domain.,similarity:Contains 1 protein kinase domain.,similarity:Contains 2 phorbol-ester/DAG-type zinc fingers.,subunit:Interacts (via N-terminus) with ADAP1/CENTA1. Interacts with





Src.,

**Background**

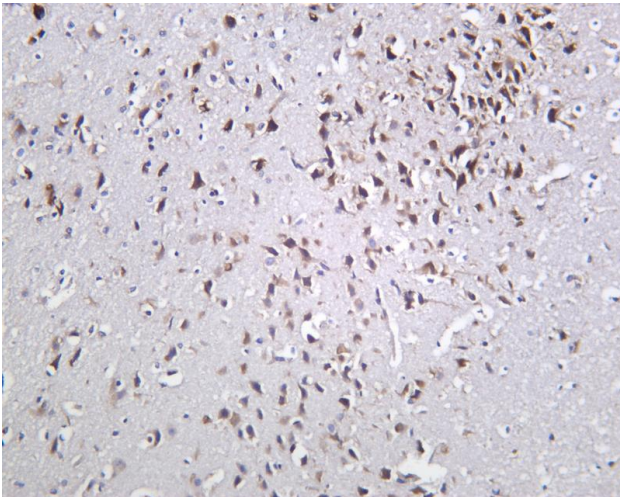
PRKD1 is a serine/threonine kinase that regulates a variety of cellular functions, including membrane receptor signaling, transport at the Golgi, protection from oxidative stress at the mitochondria, gene transcription, and regulation of cell shape, motility, and adhesion (summary by Eiseler et al., 2009 [PubMed 19329994]).[supplied by OMIM, Nov 2010],

**matters needing attention**

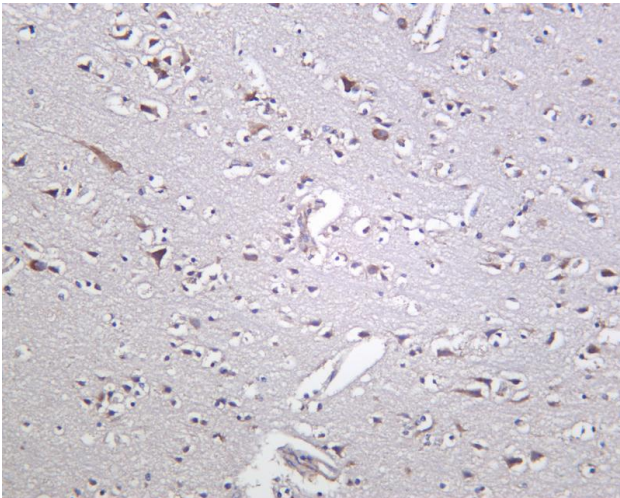
Avoid repeated freezing and thawing!

**Usage suggestions**

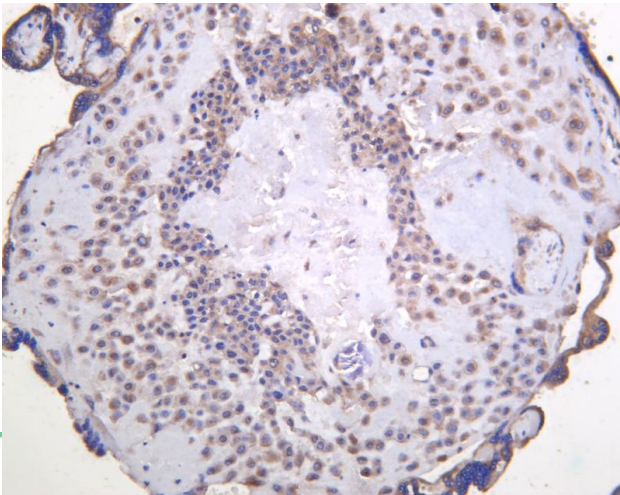
This product can be used in immunological reaction related experiments. For more information, please consult technical personnel.



Rat brain was stained with anti-PKD1 Rabbit antibody



Human brain was stained with anti-PKD1 Rabbit antibody



Human placenta was stained with anti-PKD1 Rabbit antibody

**热销产品:**

蛋白、一抗、抗体对、ELISA试剂盒、生化试剂盒  
CCK8试剂盒、QPCR检测试剂盒

**检测服务:**

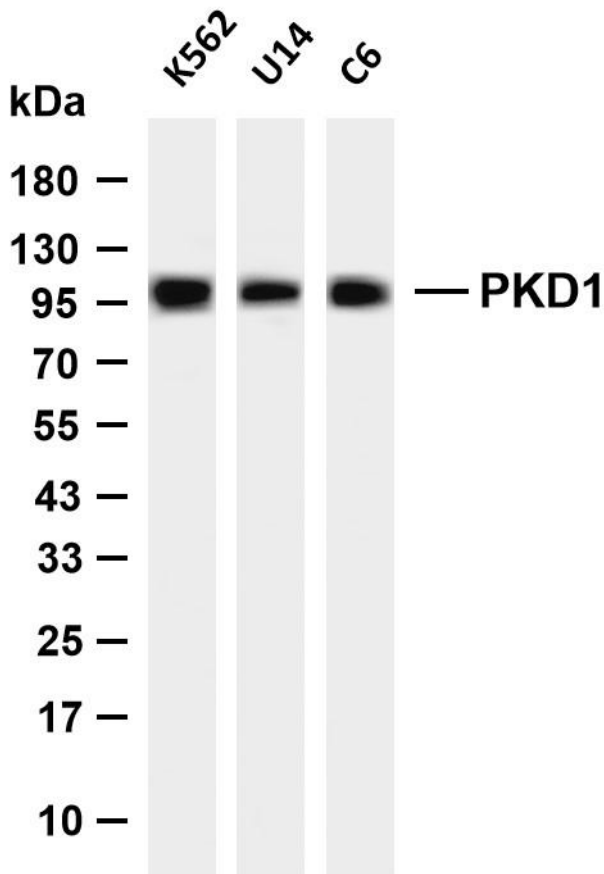
ELISA检测及定制服务 | 生化检测 | PCR、QPCR检测 | WB检测  
ICO-IP检测 | 切片 | 染色 | 免疫组化 | 免疫荧光 | 透射电镜全套  
| 宏基因组、转录组、基因组、蛋白组、代谢组测序



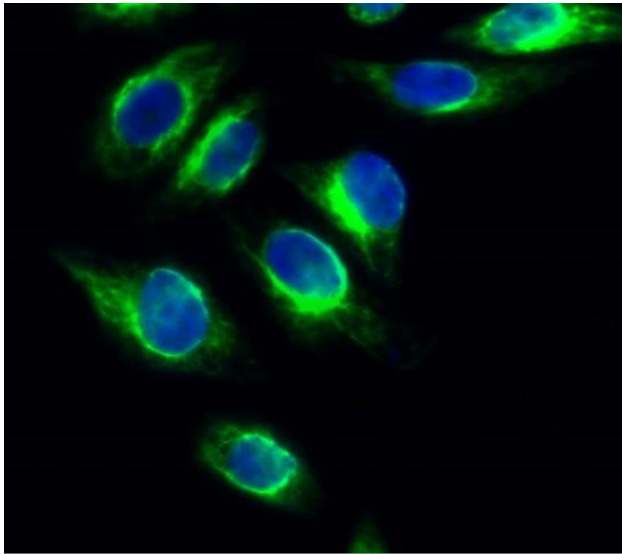
关注官网



关注客服



Various whole cell lysates were separated by 4-20% SDS-PAGE, and the membrane was blotted with anti-PKD1 antibody. The HRP-conjugated Goat anti-Rabbit IgG (H + L) antibody was used to detect the antibody. Lane 1: K562 Lane 2: U14 Lane 3: C6  
Predicted band size: 102kDa Observed band size: 102kDa



Immunofluorescence analysis of HeLa cell. 1, PKD1 Antibody (green) was diluted at 1:200 (4° overnight). 2, Goat Anti Rabbit Alexa Fluor 488 Catalog: RS3211 was diluted at 1:1000 (room temperature, 50min). 3 DAPI (blue) 10min.

## 杭州臻优品生物科技有限公司

### 热销产品:

蛋白、一抗、抗体对、ELISA试剂盒、生化试剂盒  
CCK8试剂盒、QPCR检测试剂盒

### 检测服务:

ELISA检测及定制服务 | 生化检测 | PCR、QPCR检测 | WB检测  
ICO-IP检测 | 切片 | 染色 | 免疫组化 | 免疫荧光 | 透射电镜全套  
| 宏基因组、转录组、基因组、蛋白组、代谢组测序



关注官网



关注客服