



Annexin II Rabbit mAb

Catalog No	YP-rAb-17375
Isotype	IgG
Reactivity	Human,Mouse,Rat
Applications	WB,IHC,IF,ELISA
Gene Name	ANXA2
Protein Name	Annexin A2
Purification Process	Protein A
Specificity	Endogenous
Formulation	PBS, 50% glycerol, 0.05% Proclin 300, 0.05%BSA
Source	Monoclonal, Rabbit,IgG
Dilution	IHC 1:2000-1:10000; WB 1:2000-1:10000; IF 1:200-1:1000; ELISA 1:5000-1:20000; Note: For IHC, we suggest antigen retrieval with TE buffer pH 9.0
Concentration	0.5 mg/ml
Purity	≥90%
Storage Stability	-15° C to -25° C/1 year(Do not lower than -25° C)
Synonyms	ANXA2 ; ANX2 ; ANX2L4 ; CAL1H ; LPC2D ; Annexin A2 ; Annexin II ; Annexin-2 ; Calpactin I heavy chain ; Calpactin-1 heavy chain ; Chromobindin-8 ; Lipocortin II ; Placental anticoagulant protein IV ; PAP-IV ; Protein I ; p36
Observed Band	39kD
Calculated Molecular Weight	39kD
Cell Pathway	Secreted, extracellular space, extracellular matrix, basement membrane . Melanosome . In the lamina beneath the plasma membrane. Identified by mass spectrometry in melanosome fractions from stage I to stage IV. Translocated from the cytoplasm to the cell surface through a Golgi-independent mechanism.
Tissue Specificity	Brain,Colon,Colon adenocarcinoma,Epithelium,Osteosarcoma,Pancreas,Placenta,Prostate,Skin,Te
Function	Domain:A pair of annexin repeats may form one binding site for calcium and phospholipid.,Function:Calcium-regulated membrane-binding protein whose affinity for calcium is greatly enhanced by anionic phospholipids. It binds two calcium ions with high affinity. May be involved in heat-stress response.,miscellaneous:It may cross-link plasma membrane phospholipids with actin and the cytoskeleton and be involved with exocytosis.,online information:Red velvet - Issue 86 of September 2007,PTM:Phosphorylation of





Tyr-24 enhances heat stress-induced translocation to the cell surface.,similarity:Belongs to the annexin family.,similarity:Contains 4 annexin repeats.,subcellular location:In the lamina beneath the plasma membrane. Identified by mass spectrometry in melanosome fractions from stage I to stage IV. Translocated from the cytoplasm to the cell surface through a Golgi-independent mechanism.,subunit:Heterotetramer containing 2 light chains of S100A10/p11 and 2 heavy chains of ANXA2/p36. Interacts with ATP1B1 and DYSF.,

Background

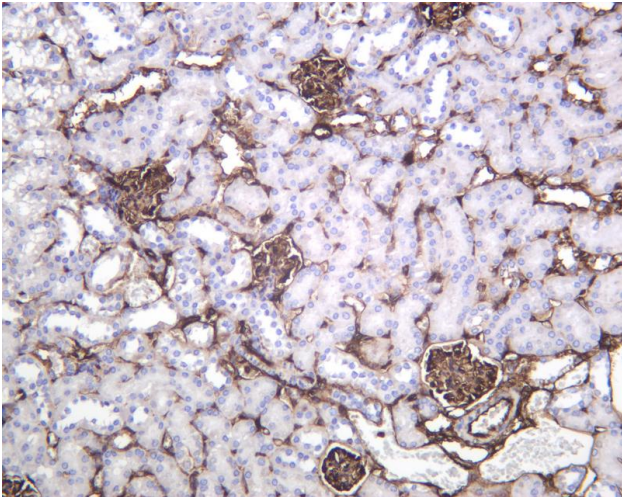
This gene encodes a member of the annexin family. Members of this calcium-dependent phospholipid-binding protein family play a role in the regulation of cellular growth and in signal transduction pathways. This protein functions as an autocrine factor which heightens osteoclast formation and bone resorption. This gene has three pseudogenes located on chromosomes 4, 9 and 10, respectively. Multiple alternatively spliced transcript variants encoding different isoforms have been found for this gene. [provided by RefSeq, Jul 2008],

matters needing attention

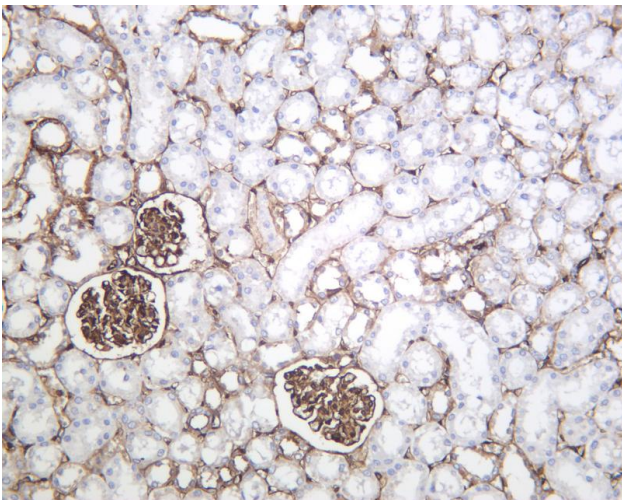
Avoid repeated freezing and thawing!

Usage suggestions

This product can be used in immunological reaction related experiments. For more information, please consult technical personnel.

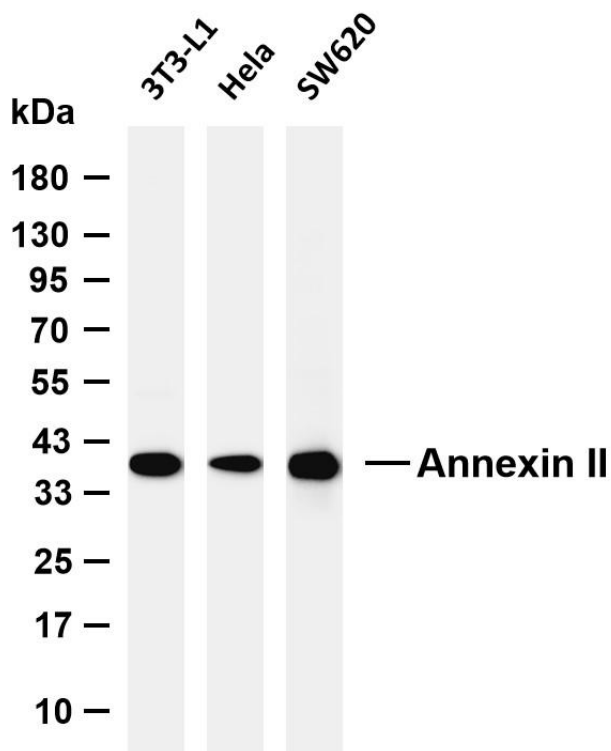


Mouse kidney was stained with anti-Annexin II Rabbit antibody



Rat kidney was stained with anti-Annexin II Rabbit antibody





Various whole cell lysates were separated by 4-20% SDS-PAGE, and the membrane was blotted with anti-Annexin II antibody. The HRP-conjugated Goat anti-Rabbit IgG (H + L) antibody was used to detect the antibody. Lane 1: 3T3-L1 Lane 2: HeLa Lane 3: SW620
Predicted band size: 39kDa Observed band size: 39kDa

