



# Crk-L Rabbit mAb

<b>Catalog No</b>	YP-rAb-17372
<b>Isotype</b>	IgG
<b>Reactivity</b>	Human,Mouse,Rat
<b>Applications</b>	WB,IHC,IF,IP,ELISA
<b>Gene Name</b>	CRKL
<b>Protein Name</b>	Crk-like protein
<b>Purification Process</b>	Protein A
<b>Specificity</b>	Endogenous
<b>Formulation</b>	PBS, 50% glycerol, 0.05% Proclin 300, 0.05%BSA
<b>Source</b>	Monoclonal, Rabbit,IgG
<b>Dilution</b>	IHC 1:200-1:1000; WB 1:2000-1:10000; IF 1:200-1:1000; ELISA 1:5000-1:20000; IP 1:50-1:200; Note: For IHC, we suggest antigen retrieval with TE buffer pH 9.0
<b>Concentration</b>	0.5 mg/ml
<b>Purity</b>	≥90%
<b>Storage Stability</b>	-15° C to -25° C/1 year(Do not lower than -25° C)
<b>Synonyms</b>	CRKL ; Crk-like protein
<b>Observed Band</b>	39kD
<b>Calculated Molecular Weight</b>	34kD
<b>Cell Pathway</b>	endosome,cytosol,cell-cell adherens junction,extracellular exosome,
<b>Tissue Specificity</b>	Skin,Spleen,
<b>Function</b>	May mediate the transduction of intracellular signals.,similarity:Contains 1 SH2 domain.,similarity:Contains 2 SH3 domains.,subunit:Interacts with INPP5D/SHIP1. Interacts with DOCK2 and EPOR. Interacts with phosphorylated CBLB and IRS4.,
<b>Background</b>	This gene encodes a protein kinase containing SH2 and SH3 (src homology) domains which has been shown to activate the RAS and JUN kinase signaling pathways and transform fibroblasts in a RAS-dependent fashion. It is a substrate of the BCR-ABL tyrosine kinase, plays a role in fibroblast transformation by BCR-ABL, and may be oncogenic.[provided by RefSeq, Jan 2009],
<b>matters needing attention</b>	Avoid repeated freezing and thawing!

杭州臻优品生物科技有限公司

热销产品:

蛋白、一抗、抗体对、ELISA试剂盒、生化试剂盒  
CCK8试剂盒、QPCR检测试剂盒

检测服务:

ELISA检测及定制服务 | 生化检测 | PCR、QPCR检测 | WB检测  
ICO-IP检测 | 切片 | 染色 | 免疫组化 | 免疫荧光 | 透射电镜全套  
| 宏基因组、转录组、基因组、蛋白组、代谢组测序



关注官网

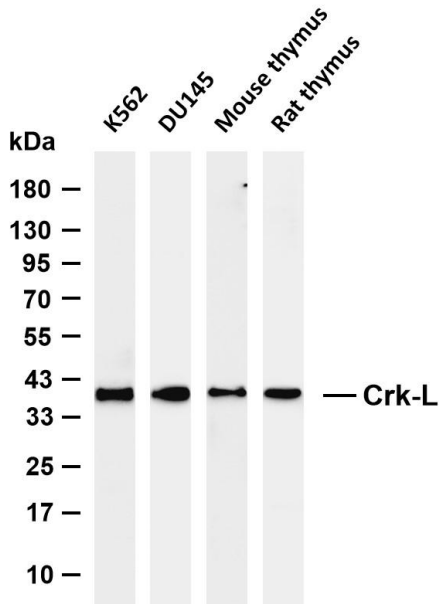


关注客服

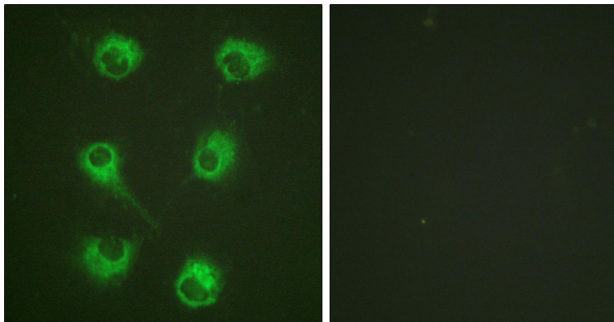


### Usage suggestions

This product can be used in immunological reaction related experiments. For more information, please consult technical personnel.



Various whole cell lysates were separated by 4-20% SDS-PAGE, and the membrane was blotted with anti-Crk-L antibody. The HRP-conjugated Goat anti-Rabbit IgG (H + L) antibody was used to detect the antibody. Lane 1: K562 Lane 2: DU145 Lane 3: Mouse thymus Lane 4: Rat thymus Predicted band size: 34kDa Observed band size: 39kDa



Immunofluorescence analysis of HUVEC cells, using CrkL Antibody. The picture on the right is blocked with the synthesized peptide.

