



MMP-1 Rabbit mAb

Catalog No	YP-rAb-17363
Isotype	IgG
Reactivity	Human
Applications	WB,IHC,IF,IP,ELISA
Gene Name	MMP1
Protein Name	Interstitial collagenase
Purification Process	Protein A
Specificity	Endogenous
Formulation	PBS, 50% glycerol, 0.05% Proclin 300, 0.05%BSA
Source	Monoclonal, Rabbit,IgG
Dilution	IHC 1:200-1:1000; WB 1:2000-1:10000; IF 1:200-1:1000; ELISA 1:5000-1:20000; IP 1:50-1:200; Note: For IHC, we suggest antigen retrieval with TE buffer pH 9.0
Concentration	0.5 mg/ml
Purity	≥90%
Storage Stability	-15° C to -25° C/1 year(Do not lower than -25° C)
Synonyms	MMP1 ; CLG ; Interstitial collagenase ; Fibroblast collagenase ; Matrix metalloproteinase-1 ; MMP-1
Observed Band	54kD
Calculated Molecular Weight	54kD
Cell Pathway	Secreted, extracellular space, extracellular matrix .
Tissue Specificity	Fibroblast,Ovary,Synovial cell,Synovial membrane,Thyroid,
Function	Catalytic activity: Cleavage of the triple helix of collagen at about three-quarters of the length of the molecule from the N-terminus, at 775-Gly- -Ile-776 in the alpha-1(I) chain. Cleaves synthetic substrates and alpha-macroglobulins at bonds where P1' is a hydrophobic residue., cofactor: Binds 2 zinc ions per subunit., cofactor: Binds 4 calcium ions per subunit., Domain: The conserved cysteine present in the cysteine-switch motif binds the catalytic zinc ion, thus inhibiting the enzyme. The dissociation of the cysteine from the zinc ion upon the activation-peptide release activates the enzyme., Domain: There are two distinct domains in this protein; the catalytic N-terminal, and the C-terminal which is involved in substrate specificity and in binding TIMP (tissue inhibitor of metalloproteinases), enzyme regulation: Can be activated without removal of the activation peptide., Function: Cleaves collagens of types I, II, and III at one site in

杭州臻优品生物科技有限公司

热销产品:

蛋白、一抗、抗体对、ELISA试剂盒、生化试剂盒
CCK8试剂盒、QPCR检测试剂盒

检测服务:

ELISA检测及定制服务 | 生化检测 | PCR、QPCR检测 | WB检测
| CO-IP检测 | 切片 | 染色 | 免疫组化 | 免疫荧光 | 透射电镜全套
| 宏基因组、转录组、基因组、蛋白组、代谢组测序



关注官网



关注客服



the helical domain. Also cleaves collagens of types VII and X. In case of HIV infection, interacts and cleaves the secreted viral Tat protein, leading to a decrease in neuronal Tat's mediated neurotoxicity.,online information:Collagenase entry,PTM:Undergoes autolytic cleavage to two major forms (22 kDa and 27 kDa). A minor form (25 kDa) is the glycosylated form of the 22 kDa form. The 27 kDa form has no activity while the 22/25 kDa form can act as activator for collagenase.,similarity:Belongs to the peptidase M10A family.,similarity:Contains 4 hemopexin-like domains.,subunit:Interacts with HIV-1 Tat.,

Background

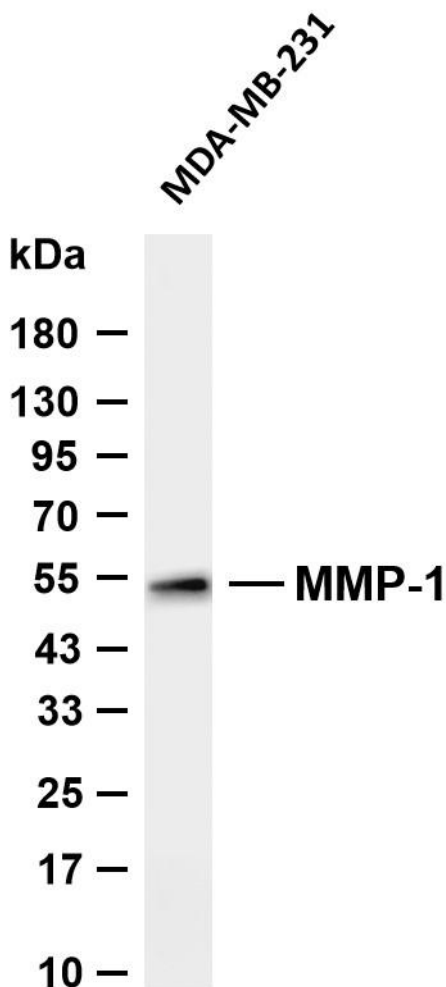
matrix metalloproteinase 1(MMP1) Homo sapiens This gene encodes a member of the peptidase M10 family of matrix metalloproteinases (MMPs). Proteins in this family are involved in the breakdown of extracellular matrix in normal physiological processes, such as embryonic development, reproduction, and tissue remodeling, as well as in disease processes, such as arthritis and metastasis. The encoded preproprotein is proteolytically processed to generate the mature protease. This secreted protease breaks down the interstitial collagens, including types I, II, and III. The gene is part of a cluster of MMP genes on chromosome 11. Mutations in this gene are associated with chronic obstructive pulmonary disease (COPD). Alternative splicing results in multiple transcript variants, at least one of which encodes an isoform that is proteolytically processed. [provided by RefSeq, Jan 2016],

matters needing attention

Avoid repeated freezing and thawing!

Usage suggestions

This product can be used in immunological reaction related experiments. For more information, please consult technical personnel.



Various whole cell lysates were separated by 4-20% SDS-PAGE, and the membrane was blotted with anti-MMP-1 antibody. The HRP-conjugated Goat anti-Rabbit IgG (H + L) antibody was used to detect the antibody. Lane 1: MDA-MB-231 Predicted band size: 54kDa Observed band size: 54kDa





杭州臻优品生物科技有限公司

热销产品:

蛋白、一抗、抗体对、ELISA试剂盒、生化试剂盒
CCK8试剂盒、QPCR检测试剂盒

检测服务:

ELISA检测及定制服务 | 生化检测 | PCR、QPCR检测 | WB检测
ICO-IP检测 | 切片 | 染色 | 免疫组化 | 免疫荧光 | 透射电镜全套
| 宏基因组、转录组、基因组、蛋白组、代谢组测序



关注官网



关注客服