



BNIP3L Rabbit mAb

Catalog No	YP-rAb-17355
Isotype	IgG
Reactivity	Human,Mouse,Rat
Applications	WB,IHC,IF,ELISA
Gene Name	BNIP3L BNIP3A BNIP3H NIX
Protein Name	BCL2/adenovirus E1B 19 kDa protein-interacting protein 3-like (Adenovirus E1B19K-binding protein B5) (BCL2/adenovirus E1B 19 kDa protein-interacting protein 3A) (NIP3-like protein X) (NIP3L)
Purification Process	Protein A
Specificity	Endogenous
Formulation	PBS, 50% glycerol, 0.05% Proclin 300, 0.05%BSA
Source	Monoclonal, Rabbit,IgG
Dilution	IHC 1:200-1:1000; WB 1:500-1:2000; IF 1:200-1:1000; ELISA 1:5000-1:20000; Note: For IHC, we suggest antigen retrieval with TE buffer pH 9.0
Concentration	0.5 mg/ml
Purity	≥90%
Storage Stability	-15° C to -25° C/1 year(Do not lower than -25° C)
Synonyms	
Observed Band	38kD
Calculated Molecular Weight	24kD
Cell Pathway	Nucleus envelope. Endoplasmic reticulum. Mitochondrion outer membrane. Membrane ; Single-pass membrane protein . Colocalizes with SPATA18 at the mitochondrion outer membrane.
Tissue Specificity	Bone marrow,Brain,Cervix,Epithelium,Fetal liver,Hair follicle dermal papilla
Function	Induces apoptosis. Interacts with viral and cellular anti-apoptosis proteins. Can overcome the suppressors BCL-2 and BCL-XL, although high levels of BCL-XL expression will inhibit apoptosis. May function as a tumor suppressor. Inhibits apoptosis induced by BNIP3.,PTM:Undergoes progressive proteolysis to an 11 kDa C-terminal fragment, which is blocked by the proteasome inhibitor lactacystin.,similarity:Belongs to the NIP3 family.,subunit:Self-associates. Interacts with BNIP3 and STEAP3. Interacts with human adenovirus-2 E1B 19 kDa protein.,
Background	BCL2 interacting protein 3 like(BNIP3L) Homo sapiens This gene encodes a protein that belongs to the pro-apoptotic subfamily within the Bcl-2 family of

杭州臻优品生物科技有限公司

热销产品:

蛋白、一抗、抗体对、ELISA试剂盒、生化试剂盒
CCK8试剂盒、QPCR检测试剂盒

检测服务:

ELISA检测及定制服务 | 生化检测 | PCR、QPCR检测 | WB检测
ICO-IP检测 | 切片 | 染色 | 免疫组化 | 免疫荧光 | 透射电镜全套
| 宏基因组、转录组、基因组、蛋白组、代谢组测序



关注官网



关注客服



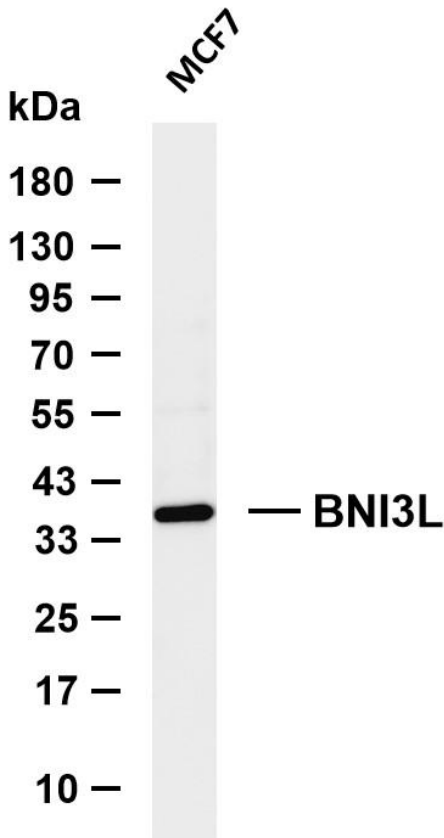
proteins. The encoded protein binds to Bcl-2 and possesses the BH3 domain. The protein directly targets mitochondria and causes apoptotic changes, including loss of membrane potential and the release of cytochrome c. [provided by RefSeq, Feb 2015],

matters needing attention

Avoid repeated freezing and thawing!

Usage suggestions

This product can be used in immunological reaction related experiments. For more information, please consult technical personnel.



Various whole cell lysates were separated by 4-20% SDS-PAGE, and the membrane was blotted with anti-BNI3L antibody. The HRP-conjugated Goat anti-Rabbit IgG (H + L) antibody was used to detect the antibody. Lane 1: MCF7 Predicted band size: 24kDa Observed band size: 38kDa

