



ARID1A Rabbit mAb

Catalog No	YP-rAb-17353
Isotype	IgG
Reactivity	Human,Mouse,Rat
Applications	WB,IHC,IF,ELISA
Gene Name	ARID1A BAF250 BAF250A C1orf4 OSA1 SMARCF1
Protein Name	AT-rich interactive domain-containing protein 1A (ARID domain-containing protein 1A) (B120) (BRG1-associated factor 250) (BAF250) (BRG1-associated factor 250a) (BAF250A) (Osa homolog 1) (hOSA1) (SWI-like protein) (SWI/SNF complex protein p270) (SWI/SNF-related, matrix-associated, actin-dependent regulator of chromatin subfamily F member 1) (hELD)
Purification Process	Protein A
Specificity	Endogenous
Formulation	PBS, 50% glycerol, 0.05% Proclin 300, 0.05%BSA
Source	Monoclonal, Rabbit,IgG
Dilution	IHC 1:200-1:1000; WB 1:2000-1:10000; IF 1:200-1:1000; ELISA 1:5000-1:20000; Note: For IHC, we suggest antigen retrieval with TE buffer pH 9.0
Concentration	0.5 mg/ml
Purity	≥90%
Storage Stability	-15° C to -25° C/1 year(Do not lower than -25° C)
Synonyms	
Observed Band	270kD
Calculated Molecular Weight	242kD
Cell Pathway	Nucleus .
Tissue Specificity	Highly expressed in spleen, thymus, prostate, testis, ovary, small intestine, colon, and PBL, and at a much lower level in heart, brain, placenta, lung, liver, skeletal muscle, kidney, and pancreas.
Function	Involved in transcriptional activation and repression of select genes by chromatin remodeling (alteration of DNA-nucleosome topology). Binds DNA non-specifically. Also involved in vitamin D-coupled transcription regulation via its association with the WINAC complex, a chromatin-remodeling complex recruited by vitamin D receptor (VDR), which is required for the ligand-bound VDR-mediated transrepression of the CYP27B1 gene.,PTM:Phosphorylated upon DNA damage, probably by ATM or ATR.,similarity:Contains 1 ARID domain.,subunit:Component of SWI/SNF chromatin remodeling complexes, in some of which it can be mutually exclusive with ARID1B/BAF250B. Component of the BAF (SWI/SNF-A) complex,

杭州臻优品生物科技有限公司

热销产品:

蛋白、一抗、抗体对、ELISA试剂盒、生化试剂盒
CCK8试剂盒、QPCR检测试剂盒

检测服务:

ELISA检测及定制服务 | 生化检测 | PCR、QPCR检测 | WB检测
ICO-IP检测 | 切片 | 染色 | 免疫组化 | 免疫荧光 | 透射电镜全套
| 宏基因组、转录组、基因组、蛋白组、代谢组测序



关注官网



关注客服



which includes at least actin (ACTB), ARID1A, ARID1B/BAF250, SMARCA2, SMARCA4/BRG1, ACTL6A/BAF53, ACTL6B/BAF53B, SMARCE1/BAF57, SMARCC1/BAF155, SMARCC2/BAF170, SMARCB1/SNF5/INI1, and one or more of SMARCD1/BAF60A, SMARCD2/BAF60B, or SMARCD3/BAF60C. In muscle cells, the BAF complex also contains DPF3. Component of the SWI/SNF-B (PBAF) complex, at least composed of SMARCA4/BRG1, SMARCB1/BAF47, ACTL6A/BAF53A or ACTL6B/BAF53B, SMARCE1/BAF57, SMARCD1/BAF60A, SMARCD2/BAF60B, perhaps SMARCD3/BAF60C, SMARCC1/BAF155, SMARCC2/BAF170, PB1/BAF180, ARID2/BAF200, ARID1A/BAF250A or ARID1B/BAF250B and actin. Component of the SWI/SNF Brm complex, at least composed of SMARCA2/BRM, SMARCB1/BAF47, ACTL6A/BAF53A or ACTL6B/BAF53B, SMARCE1/BAF57, BAF60 (one or more of SMARCD1/BAF60A, SMARCD2/BAF60B, or SMARCD3/BAF60C), SMARCC1/BAF155, SMARCC2/BAF170, ARID1A/BAF250A, SIN3A, HDAC1, HDAC2, and RBAP48. Component of the SWI/SNF complex Brg1(I), at least composed of SMARCA4/BRG1, SMARCB1/BAF47, ACTL6A/BAF53A or ACTL6B/BAF53B, SMARCE1/BAF57, BAF60 (one or more of SMARCD1/BAF60A, SMARCD2/BAF60B, or SMARCD3/BAF60C), SMARCC1/BAF155, SMARCC2/BAF170, ARID1A/BAF250A, SIN3A, and probably HDAC2 and RBAP48. Component of the SWI/SNF Brg1(II), at least composed of SMARCA4/BRG1, SMARCB1/BAF47, ACTL6A/BAF53A or ACTL6B/BAF53B, SMARCE1/BAF57, SMARCC1/BAF155, SMARCC2/BAF170, ARID1A/BAF250A and probably HDAC2 and RBAP48. Component of a SWI/SNF-like EPAFa complex, at least composed of SMARCA4/BRG1, SMARCB1/BAF47, ACTL6A/BAF53A, SMARCE1/BAF57, SMARCD1/BAF60A, SMARCC1/BAF155, SMARCC2/BAF170, BAF250A and MLLT1/ENL. Component of a SWI/SNF-like complex containing ARID1A/BAF250A and ARID1B/BAF250B. Interacts through its C-terminus with SMARCA2/BRM and SMARCA4/BRG1. Component of the WINAC complex, at least composed of SMARCA2, SMARCA4, SMARCB1, SMARCC1, SMARCC2, SMARCD1, SMARCE1, ACTL6A, BAZ1B/WSTF, ARID1A, SUPT16H, CHAF1A and TOP2B. Interacts with SMARCC1/BAF155. tissue specificity: Highly expressed in spleen, thymus, prostate, testis, ovary, small intestine, colon, and PBL, and at a much lower level in heart, brain, placenta, lung, liver, skeletal muscle, kidney, and pancreas.

Background

This gene encodes a member of the SWI/SNF family, whose members have helicase and ATPase activities and are thought to regulate transcription of certain genes by altering the chromatin structure around those genes. The encoded protein is part of the large ATP-dependent chromatin remodeling complex SNF/SWI, which is required for transcriptional activation of genes normally repressed by chromatin. It possesses at least two conserved domains that could be important for its function. First, it has a DNA-binding domain that can specifically bind an AT-rich DNA sequence known to be recognized by a SNF/SWI complex at the beta-globin locus. Second, the C-terminus of the protein can stimulate glucocorticoid receptor-dependent transcriptional activation. It is thought that the protein encoded by this gene confers specificity to the SNF/SWI complex and may recruit the complex to its targets through eit

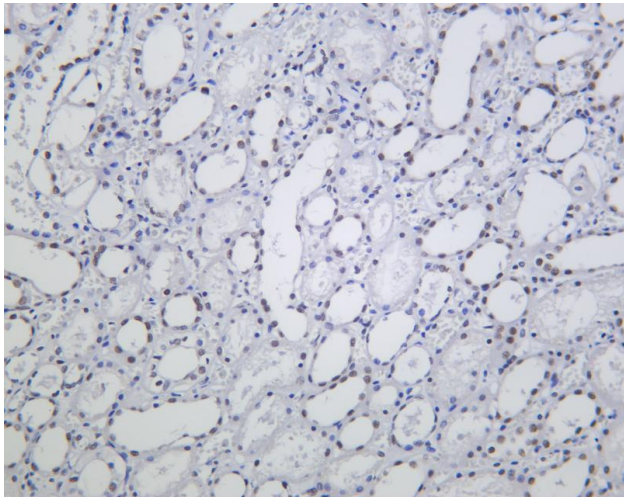
matters needing attention

Avoid repeated freezing and thawing!

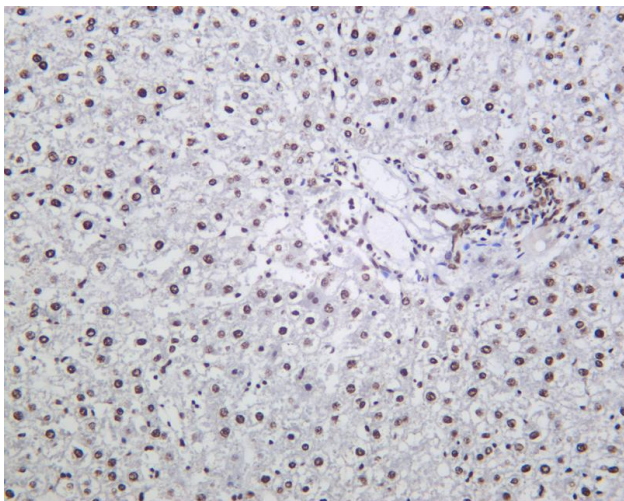
Usage suggestions

This product can be used in immunological reaction related experiments. For more information, please consult technical personnel.





Human kidney was stained with anti-ARID1A Rabbit antibody



Rat liver was stained with anti-ARID1A Rabbit antibody

杭州臻优品生物科技有限公司

热销产品:

蛋白、一抗、抗体对、ELISA试剂盒、生化试剂盒
CCK8试剂盒、QPCR检测试剂盒

检测服务:

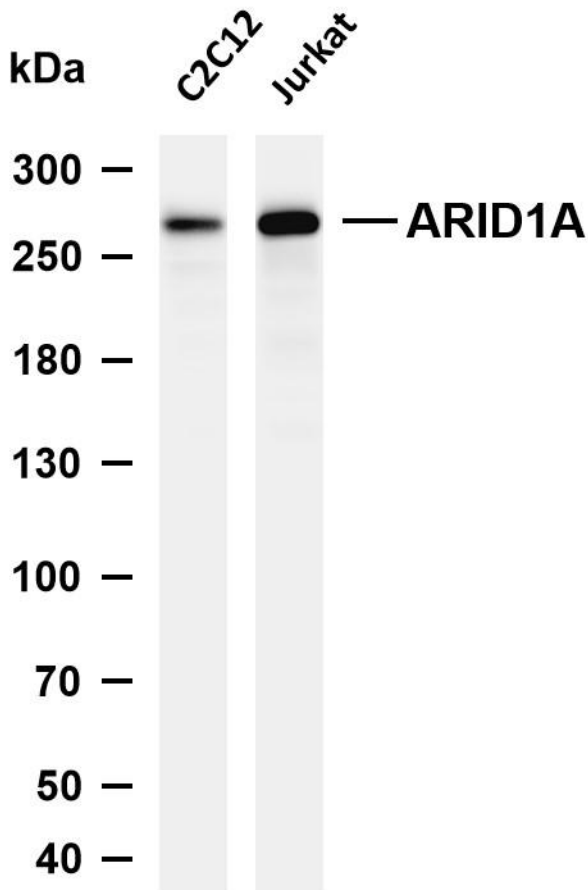
ELISA检测及定制服务 | 生化检测 | PCR、QPCR检测 | WB检测
ICO-IP检测 | 切片 | 染色 | 免疫组化 | 免疫荧光 | 透射电镜全套
| 宏基因组、转录组、基因组、蛋白组、代谢组测序



关注官网



关注客服



Various whole cell lysates were separated by 4-8% SDS-PAGE, and the membrane was blotted with anti-ARID1A antibody. The HRP-conjugated Goat anti-Rabbit IgG (H + L) antibody was used to detect the antibody. Lane 1: C2C12 Lane 2: Jurkat Predicted band size: 242kDa Observed band size: 270kDa

杭州臻优品生物科技有限公司

热销产品:

蛋白、一抗、抗体对、ELISA试剂盒、生化试剂盒
CCK8试剂盒、QPCR检测试剂盒

检测服务:

ELISA检测及定制服务 | 生化检测 | PCR、QPCR检测 | WB检测
ICO-IP检测 | 切片 | 染色 | 免疫组化 | 免疫荧光 | 透射电镜全套
| 宏基因组、转录组、基因组、蛋白组、代谢组测序



关注官网



关注客服