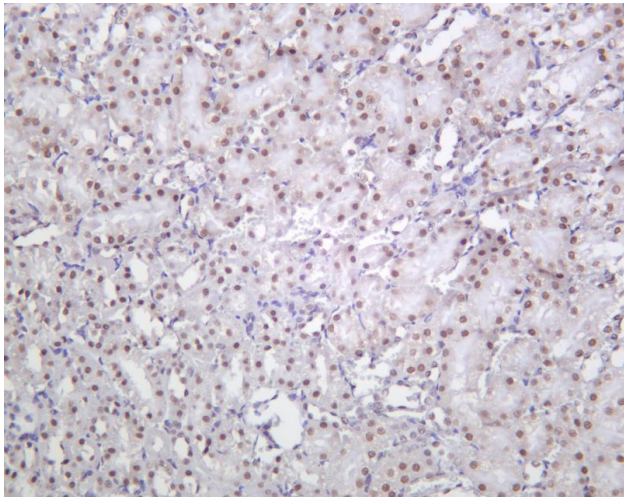




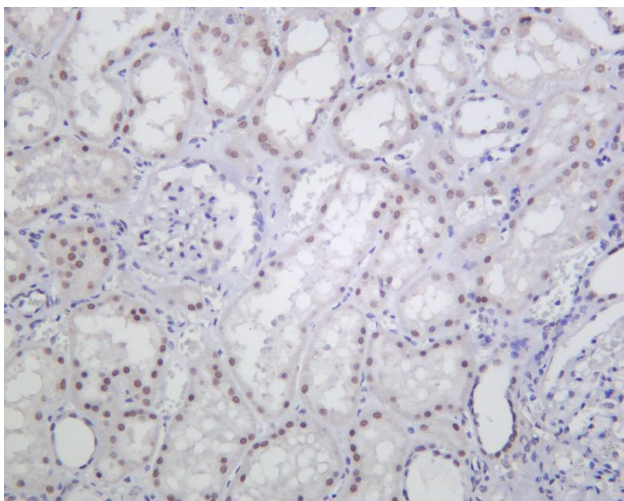
# ALKBH5 Rabbit mAb

<b>Catalog No</b>	YP-rAb-17352
<b>Isotype</b>	IgG
<b>Reactivity</b>	Human,Mouse,Rat
<b>Applications</b>	WB,IHC,IF,ELISA
<b>Gene Name</b>	ALKBH5 ABH5 OFOXD1
<b>Protein Name</b>	ALKBH5
<b>Purification Process</b>	Protein A
<b>Specificity</b>	Endogenous
<b>Formulation</b>	PBS, 50% glycerol, 0.05% Proclin 300, 0.05%BSA
<b>Source</b>	Monoclonal, Rabbit,IgG
<b>Dilution</b>	IHC 1:200-1:1000; WB 1:2000-1:10000; IF 1:200-1:1000; ELISA 1:5000-1:20000; Note: For IHC, we suggest antigen retrieval with TE buffer pH 9.0
<b>Concentration</b>	0.5 mg/ml
<b>Purity</b>	≥90%
<b>Storage Stability</b>	-15° C to -25° C/1 year(Do not lower than -25° C)
<b>Synonyms</b>	Probable alpha-ketoglutarate-dependent dioxygenase ABH5 ; Alkylated DNA repair protein alkB homolog 5 ;
<b>Observed Band</b>	45-48kD
<b>Calculated Molecular Weight</b>	44kD
<b>Cell Pathway</b>	Nucleus speckle .
<b>Tissue Specificity</b>	Widely expressed, with highest expression in lung, followed by testis, pancreas, spleen and ovary.
<b>Function</b>	similarity:Belongs to the alkB family.,
<b>Background</b>	similarity:Belongs to the alkB family.,
<b>matters needing attention</b>	Avoid repeated freezing and thawing!
<b>Usage suggestions</b>	This product can be used in immunological reaction related experiments. For more information, please consult technical personnel.





Rat kidney was stained with anti-ALKBH5 Rabbit antibody



Human kidney was stained with anti-ALKBH5 Rabbit antibody

## 杭州臻优品生物科技有限公司

### 热销产品:

蛋白、一抗、抗体对、ELISA试剂盒、生化试剂盒  
CCK8试剂盒、QPCR检测试剂盒

### 检测服务:

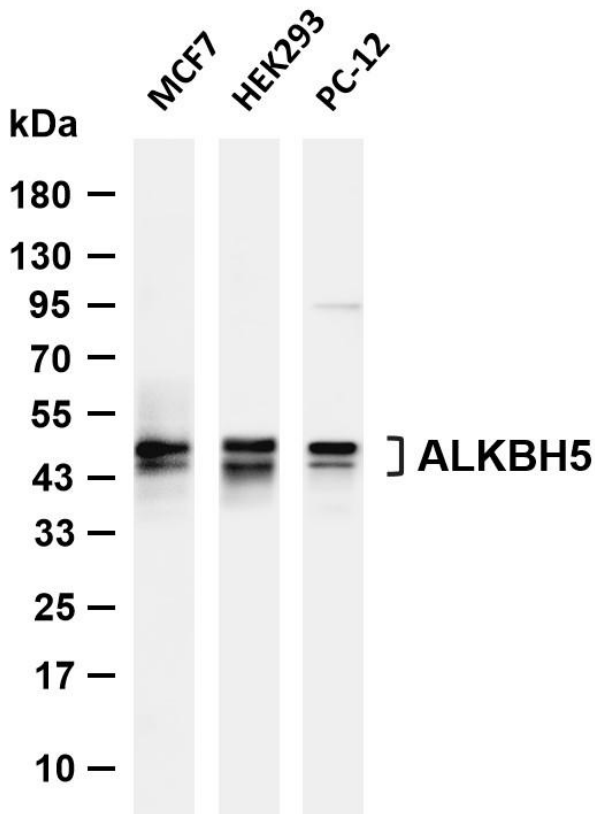
ELISA检测及定制服务 | 生化检测 | PCR、QPCR检测 | WB检测  
ICO-IP检测 | 切片 | 染色 | 免疫组化 | 免疫荧光 | 透射电镜全套  
| 宏基因组、转录组、基因组、蛋白组、代谢组测序



关注官网



关注客服



Various whole cell lysates were separated by 4-20% SDS-PAGE, and the membrane was blotted with anti-ALKBH5 antibody. The HRP-conjugated Goat anti-Rabbit IgG (H + L) antibody was used to detect the antibody. Lane 1: MCF7 Lane 2: HEK293 Lane 3: PC-12 Predicted band size: 44kDa Observed band size: 45-48kDa

