



MEK-7 Rabbit mAb

Catalog No	YP-rAb-17348
Isotype	IgG
Reactivity	Human,Mouse,Rat
Applications	WB,IHC,IF,ELISA
Gene Name	MAP2K7
Protein Name	Dual specificity mitogen-activated protein kinase kinase 7
Purification Process	Protein A
Specificity	Endogenous
Formulation	PBS, 50% glycerol, 0.05% Proclin 300, 0.05%BSA
Source	Monoclonal, Rabbit,IgG
Dilution	IHC 1:200-1:1000; WB 1:2000-1:10000; IF 1:200-1:1000; ELISA 1:5000-1:20000; Note: For IHC, we suggest antigen retrieval with TE buffer pH 9.0
Concentration	0.5 mg/ml
Purity	≥90%
Storage Stability	-15° C to -25° C/1 year(Do not lower than -25° C)
Synonyms	MAP2K7 ; JNKK2 ; MEK7 ; MKK7 ; PRKMK7 ; SKK4 ; Dual specificity mitogen-activated protein kinase kinase 7 ; MAP kinase kinase 7 ; MAPKK 7 ; JNK-activating kinase 2 ; MAPK/ERK kinase 7 ; MEK 7 ; Stress-activated protein kinase kinase 4 ; SAPK kinase 4 ; S
Observed Band	48kD
Calculated Molecular Weight	48kD
Cell Pathway	Nucleus. Cytoplasm .
Tissue Specificity	Ubiquitous; with highest level of expression in skeletal muscle. Isoform 3 is found at low levels in placenta, fetal liver, and skeletal muscle.
Function	Catalytic activity:ATP + a protein = ADP + a phosphoprotein.,cofactor:Magnesium.,enzyme regulation:Activated by phosphorylation by specific MAP kinase kinases such as MAP3K1/MEKK1, MAP3K3/MEKK3, MAP3K11/MLK3 and MAP3K12/DLK.,Function:Stress activated, dual specificity kinase that activates the JUN kinases MAPK8/JNK1, MAPK9/JNK2 and MAPK10/JNK3.,PTM:Activated by phosphorylation on Ser/Thr.,similarity:Belongs to the protein kinase superfamily. STE Ser/Thr protein kinase family. MAP kinase kinase subfamily.,similarity:Contains 1 protein kinase domain.,tissue





specificity: Ubiquitous; with highest level of expression in skeletal muscle. Isoform 3 is found at low levels in placenta, fetal liver, and skeletal muscle.,

Background

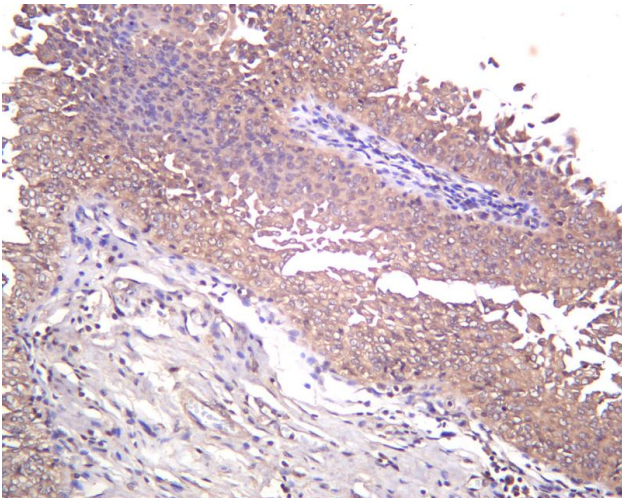
The protein encoded by this gene is a dual specificity protein kinase that belongs to the MAP kinase kinase family. This kinase specifically activates MAPK8/JNK1 and MAPK9/JNK2, and this kinase itself is phosphorylated and activated by MAP kinase kinase kinases including MAP3K1/MEKK1, MAP3K2/MEKK2, MAP3K3/MEKK5, and MAP4K2/GCK. This kinase is involved in the signal transduction mediating the cell responses to proinflammatory cytokines, and environmental stresses. Alternative splicing results in multiple transcript variants. [provided by RefSeq, Jul 2014],

matters needing attention

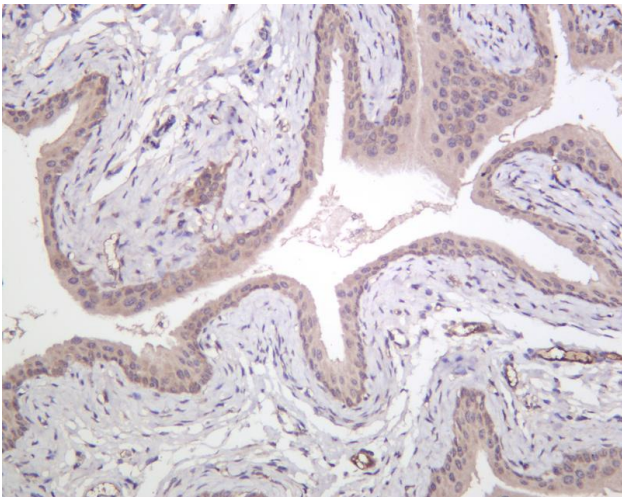
Avoid repeated freezing and thawing!

Usage suggestions

This product can be used in immunological reaction related experiments. For more information, please consult technical personnel.

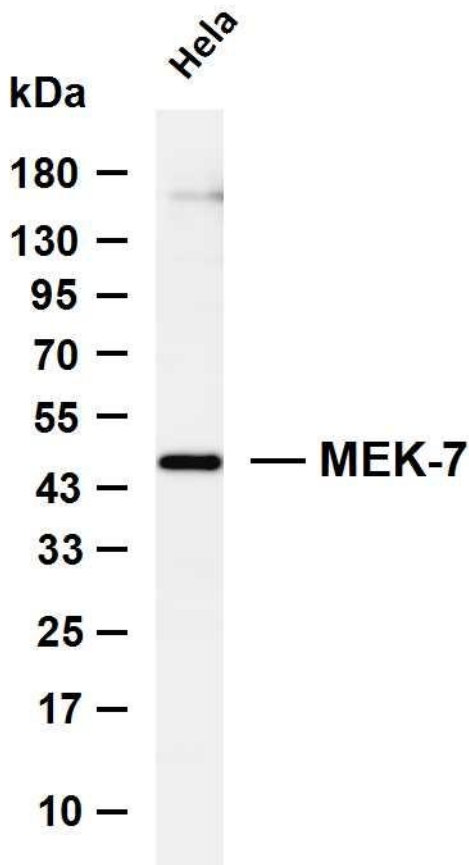


Human bladder was stained with anti-MEK-7 Rabbit antibody



Mouse bladder was stained with anti-MEK-7 Rabbit antibody





Various whole cell lysates were separated by 4-20% SDS-PAGE, and the membrane was blotted with anti-MEK-7 antibody. The HRP-conjugated Goat anti-Rabbit IgG (H + L) antibody was used to detect the antibody. Lane 1: HeLa Predicted band size: 48kDa Observed band size: 48kDa

杭州臻优品生物科技有限公司

热销产品:

蛋白、一抗、抗体对、ELISA试剂盒、生化试剂盒
CCK8试剂盒、QPCR检测试剂盒

检测服务:

ELISA检测及定制服务 | 生化检测 | PCR、QPCR检测 | WB检测
ICO-IP检测 | 切片 | 染色 | 免疫组化 | 免疫荧光 | 透射电镜全套
| 宏基因组、转录组、基因组、蛋白组、代谢组测序



关注官网



关注客服