



SRSF2 Rabbit mAb

| | |
|------------------------------------|---|
| Catalog No | YP-rAb-17342 |
| Isotype | IgG |
| Reactivity | Human,Mouse,Rat |
| Applications | WB,IHC,IF,IP,ELISA |
| Gene Name | SRSF2 SFRS2 |
| Protein Name | Serine/arginine-rich splicing factor 2 (Protein PR264) (Splicing component, 35 kDa) (Splicing factor SC35) (SC-35) (Splicing factor, arginine/serine-rich 2) |
| Purification Process | Protein A |
| Specificity | Endogenous |
| Formulation | PBS, 50% glycerol, 0.05% Proclin 300, 0.05%BSA |
| Source | Monoclonal, Rabbit,IgG |
| Dilution | IHC 1:200-1:1000; WB 1:2000-1:10000; IF 1:200-1:1000; ELISA 1:5000-1:20000; IP 1:50-1:200; Note: For IHC, we suggest antigen retrieval with TE buffer pH 9.0 |
| Concentration | 0.5 mg/ml |
| Purity | ≥90% |
| Storage Stability | -15° C to -25° C/1 year(Do not lower than -25° C) |
| Synonyms | |
| Observed Band | 35kD |
| Calculated Molecular Weight | 25kD |
| Cell Pathway | Nucleus . Nucleus, nucleoplasm . Nucleus speckle . Phosphorylation by SRPK2 provokes its redistribution from the nuclear speckle to nucleoplasm. |
| Tissue Specificity | Accumulates in a hypoacetylated/phosphorylated form in response to cisplatin treatment. |
| Function | Necessary for the splicing of pre-mRNA. It is required for formation of the earliest ATP-dependent splicing complex and interacts with spliceosomal components bound to both the 5'- and 3'-splice sites during spliceosome assembly. It also is required for ATP-dependent interactions of both U1 and U2 snRNPs with pre-mRNA. Interacts with other spliceosomal components, via the RS domains, to form a bridge between the 5'- and 3'-splice site binding components, U1 snRNP and U2AF. Binds to purine-rich RNA sequences, either 5'-AGSAGAGTA-3' (S=C or G) or 5'-GTTCGAGTA-3'. Can bind to beta-globin mRNA and commit it to the splicing pathway. The phosphorylated form (by SRPK2) is required for cellular apoptosis in response to cisplatin treatment. |
| Background | The protein encoded by this gene is a member of the serine/arginine (SR)-rich family of pre-mRNA splicing factors, which constitute part of the spliceosome. |

杭州臻优品生物科技有限公司

热销产品:

蛋白、一抗、抗体对、ELISA试剂盒、生化试剂盒
CCK8试剂盒、QPCR检测试剂盒

检测服务:

ELISA检测及定制服务 | 生化检测 | PCR、QPCR检测 | WB检测
ICO-IP检测 | 切片 | 染色 | 免疫组化 | 免疫荧光 | 透射电镜全套
| 宏基因组、转录组、基因组、蛋白组、代谢组测序



关注官网



关注客服



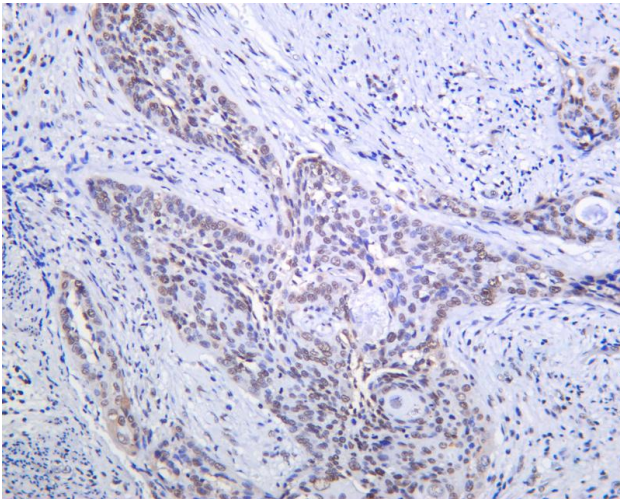
Each of these factors contains an RNA recognition motif (RRM) for binding RNA and an RS domain for binding other proteins. The RS domain is rich in serine and arginine residues and facilitates interaction between different SR splicing factors. In addition to being critical for mRNA splicing, the SR proteins have also been shown to be involved in mRNA export from the nucleus and in translation. Two transcript variants encoding the same protein and one non-coding transcript variant have been found for this gene. In addition, a pseudogene of this gene has been found on chromosome 11. [provided by RefSeq, Sep 2010]

matters needing attention

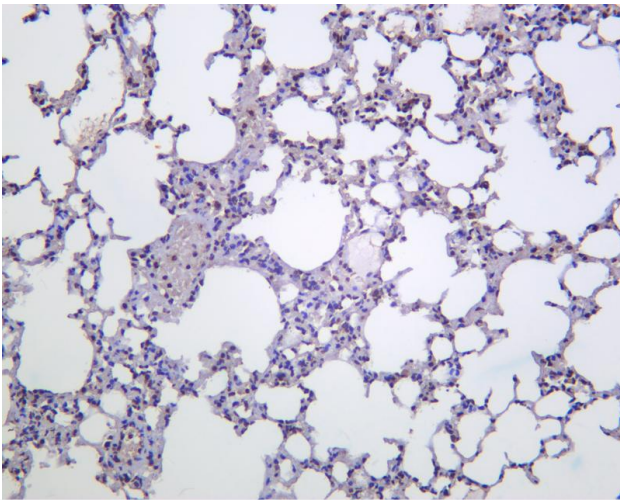
Avoid repeated freezing and thawing!

Usage suggestions

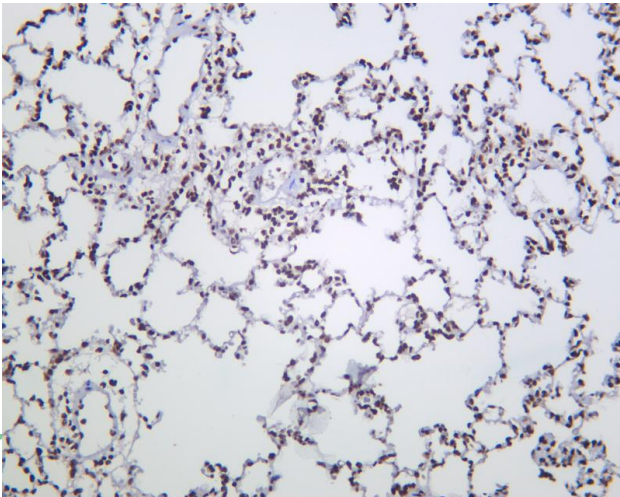
This product can be used in immunological reaction related experiments. For more information, please consult technical personnel.



Human cervical carcinoma was stained with anti-S



Mouse lung was stained with anti-S



Rat lung was stained with anti-S

热销产品:

蛋白、一抗、抗体对、ELISA试剂盒、生化试剂盒
CCK8试剂盒、QPCR检测试剂盒

检测服务:

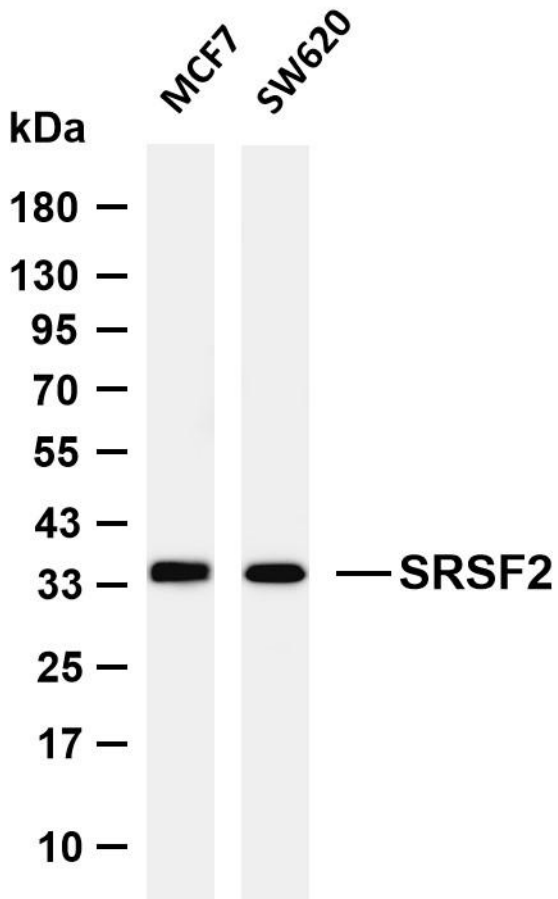
ELISA检测及定制服务 | 生化检测 | PCR、QPCR检测 | WB检测
ICO-IP检测 | 切片 | 染色 | 免疫组化 | 免疫荧光 | 透射电镜全套
| 宏基因组、转录组、基因组、蛋白组、代谢组测序



关注官网



关注客服



Various whole cell lysates were separated by 4-20% SDS-PAGE, and the membrane was blotted with anti-SRSF2 antibody. The HRP-conjugated Goat anti-Rabbit IgG (H + L) antibody was used to detect the antibody. Lane 1: MCF7 Lane 2: SW620 Predicted band size: 25kDa Observed band size: 35kDa

