



Cyclophilin B Rabbit mAb

Catalog No	YP-rAb-17341
Isotype	IgG
Reactivity	Human,Mouse,Rat
Applications	WB,IHC,IF,ELISA
Gene Name	PPIB
Protein Name	Peptidyl-prolyl cis-trans isomerase B
Purification Process	Protein A
Specificity	Endogenous
Formulation	PBS, 50% glycerol, 0.05% Proclin 300, 0.05%BSA
Source	Monoclonal, Rabbit,IgG
Dilution	IHC 1:200-1:1000; WB 1:2000-1:10000; IF 1:200-1:1000; ELISA 1:5000-1:20000; Note: For IHC, we suggest antigen retrieval with TE buffer pH 9.0
Concentration	0.5 mg/ml
Purity	≥90%
Storage Stability	-15° C to -25° C/1 year(Do not lower than -25° C)
Synonyms	PPIB ; CYPB ; Peptidyl-prolyl cis-trans isomerase B ; PPIase B ; CYP-S1 ; Cyclophilin B ; Rotamase B ; S-cyclophilin ; SCYLP
Observed Band	20kD
Calculated Molecular Weight	24kD
Cell Pathway	Virion . (Microbial infection).; Endoplasmic reticulum lumen . Melanosome . Identified by mass spectrometry in melanosome fractions from stage I to stage IV (PubMed:17081065). .
Tissue Specificity	Brain,Fetal brain cortex,Prostate,Skin,
Function	Catalytic activity:Peptidylproline (omega=180) = peptidylproline (omega=0)., Caution:It is uncertain whether Met-1 or Met-9 is the initiator.,enzyme regulation:Cyclosporin A (CsA) inhibits CYPB.,Function:PPIases accelerate the folding of proteins. It catalyzes the cis-trans isomerization of proline imidic peptide bonds in oligopeptides.,similarity:Belongs to the cyclophilin-type PPIase family. PPIase B subfamily.,similarity:Contains 1 PPIase cyclophilin-type domain.,subcellular location:Identified by mass spectrometry in melanosome fractions from stage I to stage IV.,
Background	The protein encoded by this gene is a cyclosporine-binding protein and is mainly located within the endoplasmic reticulum. It is associated with the secretory





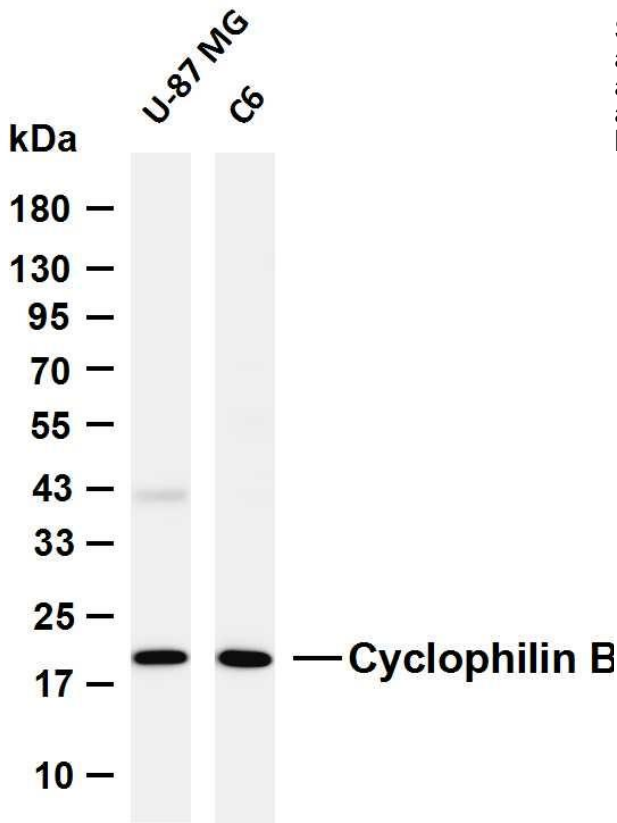
pathway and released in biological fluids. This protein can bind to cells derived from T- and B-lymphocytes, and may regulate cyclosporine A-mediated immunosuppression. Variants have been identified in this protein that give rise to recessive forms of osteogenesis imperfecta. [provided by RefSeq, Oct 2009],

matters needing attention

Avoid repeated freezing and thawing!

Usage suggestions

This product can be used in immunological reaction related experiments. For more information, please consult technical personnel.



Various whole cell lysates were separated by 4-20% SDS-PAGE, and the membrane was blotted with anti-Cyclophilin B antibody. The HRP-conjugated Goat anti-Rabbit IgG (H + L) antibody was used to detect the antibody. Lane 1: U-87 MG Lane 2: C6 Predicted band size: 24kDa Observed band size: 20kDa

