



# FLI1 Rabbit mAb

|                                    |  |
|------------------------------------|--|
| <b>Catalog No</b>                  | YP-rAb-17333   |
| <b>Isotype</b>                     | IgG  |
| <b>Reactivity</b>                  | Human,Mouse  |
| <b>Applications</b>                | WB,IHC,IF,ELISA  |
| <b>Gene Name</b>                   | FLI1   |
| <b>Protein Name</b>                | Friend leukemia integration 1 transcription factor   |
| <b>Purification Process</b>        | Protein A  |
| <b>Specificity</b>                 | Endogenous   |
| <b>Formulation</b>                 | PBS, 50% glycerol, 0.05% Proclin 300, 0.05%BSA   |
| <b>Source</b>                      | Monoclonal, Rabbit,IgG   |
| <b>Dilution</b>                    | IHC 1:200-1:500; WB 1:2000-1:10000; IF 1:200-1:1000; ELISA 1:5000-1:20000;<br>Note: For IHC, we suggest antigen retrieval with TE buffer pH 9.0  |
| <b>Concentration</b>               | 0.5 mg/ml  |
| <b>Purity</b>                      | ≥90%   |
| <b>Storage Stability</b>           | -15° C to -25° C/1 year(Do not lower than -25° C)  |
| <b>Synonyms</b>                    | FLI1 ; Friend leukemia integration 1 transcription factor ; Proto-oncogene Fli-1 ; Transcription factor ERGB   |
| <b>Observed Band</b>               | 51kD   |
| <b>Calculated Molecular Weight</b> | 51kD   |
| <b>Cell Pathway</b>                | Nucleus .  |
| <b>Tissue Specificity</b>          | Blood,Bone marrow,Lymph,Placenta,  |
| <b>Function</b>                    | Disease:A chromosomal aberration involving FLI1 is a cause of Ewing sarcoma [MIM:133450]. Translocation t(11;22)(q24;q12) with EWS.,Function:Sequence-specific transcriptional activator. Recognizes the DNA sequence 5'-C[CA]GGAAGT-3'.,miscellaneous:Located on a fragment of chromosome 11 flanked on the centromeric side by the acute lymphoblastic leukemia-associated t(4;11)(q21;q23) translocation breakpoint and on the telomeric side by the Ewing- and neuroepithelioma-associated t(11;22) (q24;q12) breakpoint.,similarity:Belongs to the ETS family.,similarity:Contains 1 ETS DNA-binding domain.,similarity:Contains 1 PNT (pointed) domain.,subunit:Can form homodimers or heterodimers with ETV6/TEL1., |





### Background

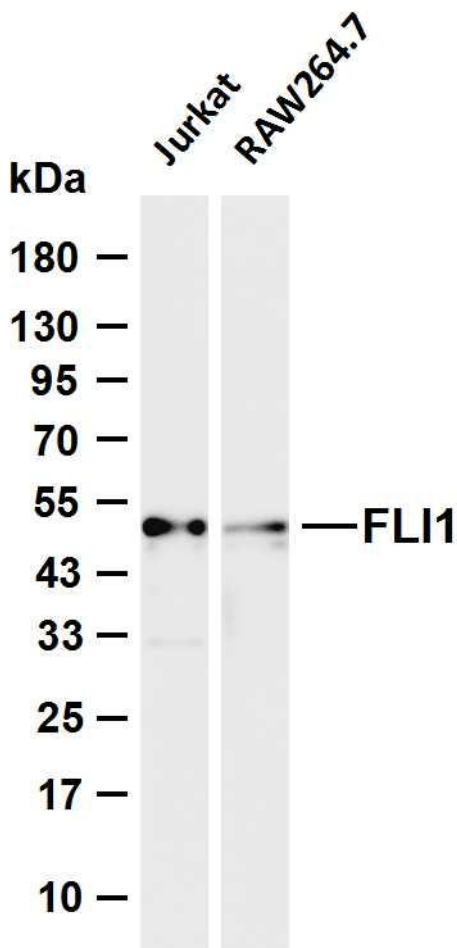
This gene encodes a transcription factor containing an ETS DNA-binding domain. The gene can undergo a t(11;22)(q24;q12) translocation with the Ewing sarcoma gene on chromosome 22, which results in a fusion gene that is present in the majority of Ewing sarcoma cases. An acute lymphoblastic leukemia-associated t(4;11)(q21;q23) translocation involving this gene has also been identified. Alternative splicing results in multiple transcript variants. [provided by RefSeq, Aug 2012],

### matters needing attention

Avoid repeated freezing and thawing!

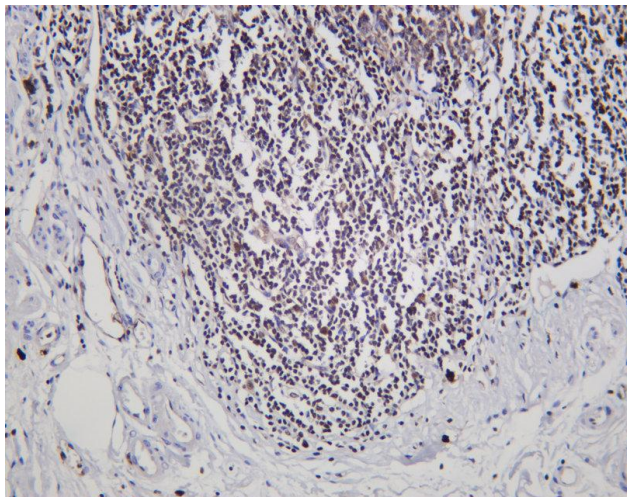
### Usage suggestions

This product can be used in immunological reaction related experiments. For more information, please consult technical personnel.



Various whole cell lysates were separated by 4-20% SDS-PAGE, and the membrane was blotted with anti-FLI1 antibody. The HRP-conjugated Goat anti-Rabbit IgG (H + L) antibody was used to detect the antibody. Lane 1: Jurkat Lane 2: RAW264.7 Predicted band size: 51kDa Observed band size: 51kDa





Human appendix was stained with anti-FLI1 Rabbit antibody

## 杭州臻优品生物科技有限公司

### 热销产品:

蛋白、一抗、抗体对、ELISA试剂盒、生化试剂盒  
CCK8试剂盒、QPCR检测试剂盒

### 检测服务:

ELISA检测及定制服务 | 生化检测 | PCR、QPCR检测 | WB检测  
ICO-IP检测 | 切片 | 染色 | 免疫组化 | 免疫荧光 | 透射电镜全套  
| 宏基因组、转录组、基因组、蛋白组、代谢组测序



关注官网



关注客服