



# Annexin I Rabbit mAb

Catalog No	YP-rAb-17331
Isotype	IgG
Reactivity	Human,Mouse,Rat
Applications	WB,IHC,IF,IP,ELISA
Gene Name	ANXA1 ANX1 LPC1
Protein Name	Annexin A1
Purification Process	Protein A
Specificity	Endogenous
Formulation	PBS, 50% glycerol, 0.05% Proclin 300, 0.05%BSA
Source	Monoclonal, Rabbit,IgG
Dilution	IHC 1:200-1:1000; WB 1:2000-1:10000; IF 1:200-1:1000; ELISA 1:5000-1:20000; IP 1:50-1:200; Note: For IHC, we suggest antigen retrieval with TE buffer pH 9.0
Concentration	0.5 mg/ml
Purity	≥90%
Storage Stability	-15° C to -25° C/1 year(Do not lower than -25° C)
Synonyms	Annexin A1 ; Annexin I ; Annexin-1 ; Calpactin II ; Calpactin-2 ; Chromobindin-9 ; Lipocortin I ; Phospholipase A2 inhibitory protein ; p35 ;
Observed Band	39kD
Calculated Molecular Weight	39kD
Cell Pathway	Nucleus . Cytoplasm . Cell projection, cilium . Cell membrane . Membrane ; Peripheral membrane protein . Endosome membrane ; Peripheral membrane protein . Basolateral cell membrane . Apical cell membrane . Lateral cell membrane . Secreted . Secreted, extracellular space . Cell membrane ; Peripheral membrane protein ; Extracellular side . Secreted, extracellular exosome . Cytoplasmic vesicle, secretory vesicle lumen . Cell projection, phagocytic cup . Early endosome . Cytoplasmic vesicle membrane ; Peripheral membrane protein . Secreted, at least in part via exosomes and other secretory vesicles. Detected in exosomes and other extracellular vesicles (PubMed:25664854). Alternatively, the secretion is dependent on protein unfolding and facilitated by the cargo receptor TMED10; it results in the protein translocation from the cytoplasm into ERGIC (endoplasmic reticulum-Golgi intermediate compartment) followed by vesicle entry and secretion (PubMed:32272059). Detected in gelatinase granules in resting neutrophils (PubMed:10772777). Secretion is increased in response to wounding and inflammation (PubMed:25664854). Secretion is increased upon T-cell activation (PubMed:17008549). Neutrophil adhesion to endothelial cells stimulates secretion

## 杭州臻优品生物科技有限公司

### 热销产品:

蛋白、一抗、抗体对、ELISA试剂盒、生化试剂盒  
CCK8试剂盒、QPCR检测试剂盒

### 检测服务:

ELISA检测及定制服务 | 生化检测 | PCR、QPCR检测 | WB检测  
ICO-IP检测 | 切片 | 染色 | 免疫组化 | 免疫荧光 | 透射电镜全套  
| 宏基因组、转录组、基因组、蛋白组、代谢组测序



关注官网

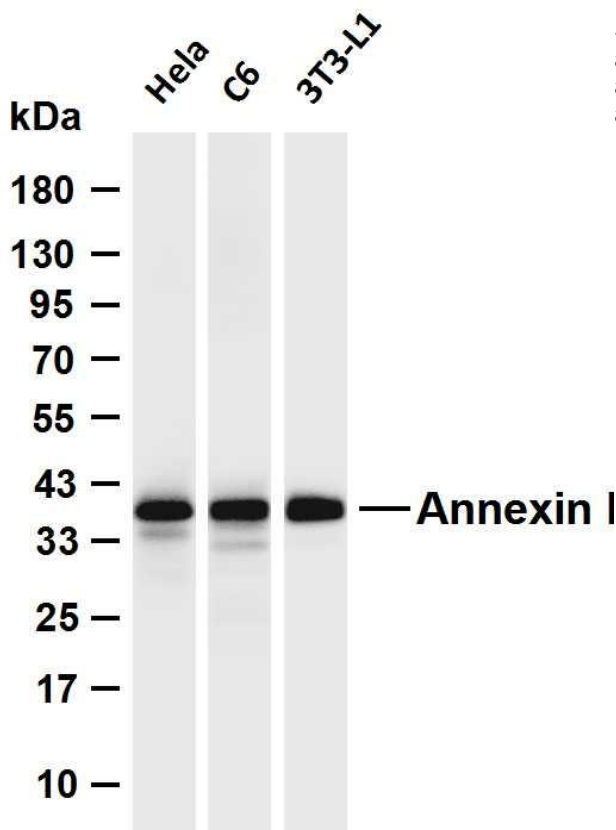


关注客服



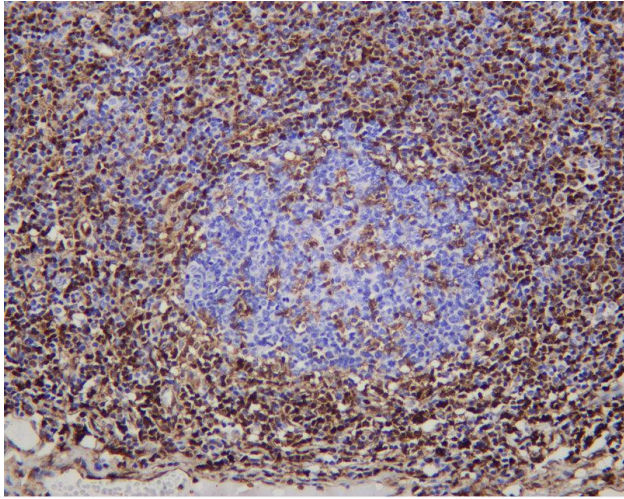
via gelatinase granules, but foreign particle phagocytosis has no effect (PubMed:10772777). Colocalizes with actin fibers at phagocytic cups (By similarity). Displays calcium-dependent binding to phospholipid membranes (PubMed:2532504, PubMed:8557678).

<b>Tissue Specificity</b>	Detected in resting neutrophils (PubMed:10772777). Detected in peripheral blood T-cells (PubMed:17008549). Detected in extracellular vesicles in blood serum from patients with inflammatory bowel disease, but not in serum from healthy donors (PubMed:25664854). Detected in placenta (at protein level) (PubMed:2532504). Detected in liver.
<b>Function</b>	Domain:A pair of annexin repeats may form one binding site for calcium and phospholipid.,Function:Calcium/phospholipid-binding protein which promotes membrane fusion and is involved in exocytosis. This protein regulates phospholipase A2 activity. It seems to bind from two to four calcium ions with high affinity.,PTM:Phosphorylated by protein kinase C, epidermal growth factor receptor/kinase and TRPM7. Phosphorylation results in loss of the inhibitory activity.,similarity:Belongs to the annexin family.,similarity:Contains 1 annexin repeat.,similarity:Contains 2 annexin repeats.,similarity:Contains 4 annexin repeats.,subcellular location:Found in the cilium, nucleus and basolateral cell membrane of ciliated cells in the tracheal endothelium (By similarity). Found in the cytoplasm of type II pneumocytes and alveolar macrophages.,subunit:Homodimer in placenta (20%); linked by transglutamylation. Interacts with DYSF.,
<b>Background</b>	This gene encodes a membrane-localized protein that binds phospholipids. This protein inhibits phospholipase A2 and has anti-inflammatory activity. Loss of function or expression of this gene has been detected in multiple tumors. [provided by RefSeq, Dec 2014],
<b>matters needing attention</b>	Avoid repeated freezing and thawing!
<b>Usage suggestions</b>	This product can be used in immunological reaction related experiments. For more information, please consult technical personnel.

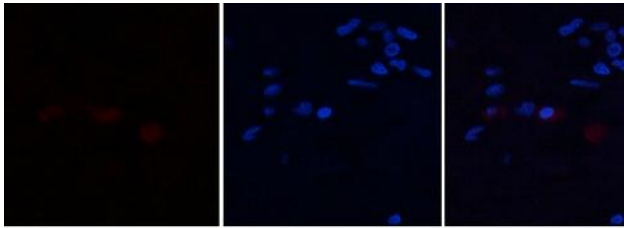


Various whole cell lysates were separated by 4-20% SDS-PAGE, and the membrane was blotted with anti-Annexin A1 antibody. The HRP-conjugated Goat anti-Rabbit IgG (H + L) antibody was used to detect the antibody. Lane 1: HeLa Lane 2: C6 Lane 3: 3T3-L1  
Predicted band size: 39kDa Observed band size: 39kDa





Human tonsil was stained with anti-Annexin A1 Rabbit antibody



Immunofluorescence analysis of human-breast tissue. 1, Annexin I Antibody (red) was diluted at 1:200 (4°C, overnight). 2, Cy3 labeled Secondary antibody was diluted at 1:300 (room temperature, 50min). 3, Picture B: DAPI (blue) 10min. Picture A: Target. Picture B: DAPI. Picture C: merge of A+B

A

B

C

