



SPARC Rabbit mAb

Catalog No	YP-rAb-17329
Isotype	IgG
Reactivity	Human,Mouse
Applications	WB,IHC,IF,ELISA
Gene Name	SPARC
Protein Name	SPARC
Purification Process	Protein A
Specificity	Endogenous
Formulation	PBS, 50% glycerol, 0.05% Proclin 300, 0.05%BSA
Source	Monoclonal, Rabbit,IgG
Dilution	IHC 1:200-1:500; WB 1:1000-1:5000; IF 1:200-1:1000; ELISA 1:5000-1:20000; Note: For IHC, we suggest antigen retrieval with TE buffer pH 9.0
Concentration	0.5 mg/ml
Purity	≥90%
Storage Stability	-15° C to -25° C/1 year(Do not lower than -25° C)
Synonyms	SPARC ; ON ; SPARC ; Basement-membrane protein 40 ; BM-40 ; Osteonectin ; ON ; Secreted protein acidic and rich in cysteine
Observed Band	39kD
Calculated Molecular Weight	35kD
Cell Pathway	Secreted, extracellular space, extracellular matrix, basement membrane . In or around the basement membrane.
Tissue Specificity	Muscle,Placenta,PNS,Prostate,Skin,
Function	developmental stage:Expressed at high levels in tissues undergoing morphogenesis, remodeling and wound repair.,Function:Appears to regulate cell growth through interactions with the extracellular matrix and cytokines. Binds calcium and copper, several types of collagen, albumin, thrombospondin, PDGF and cell membranes. There are two calcium binding sites; an acidic domain that binds 5 to 8 Ca(2+) with a low affinity and an EF-hand loop that binds a Ca(2+) ion with a high affinity.,online information:Osteonectin entry,similarity:Belongs to the SPARC family.,similarity:Contains 1 EF-hand domain.,similarity:Contains 1 follistatin-like domain.,similarity:Contains 1 Kazal-like domain.,subcellular location:In or around the basement membrane.,





Background

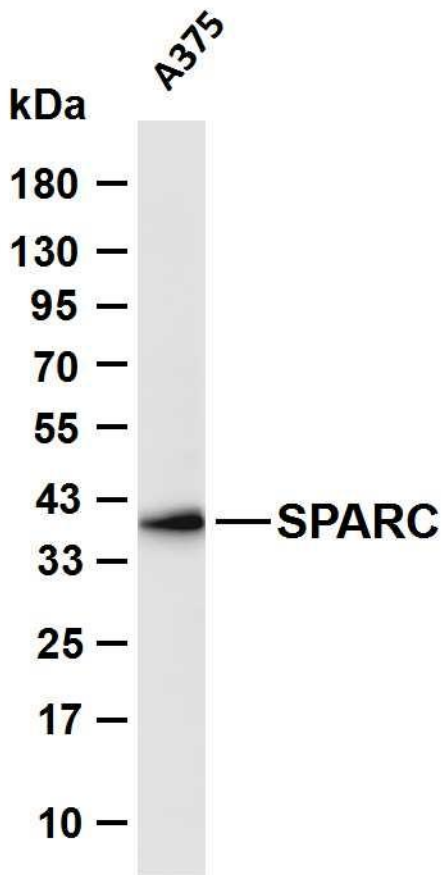
This gene encodes a cysteine-rich acidic matrix-associated protein. The encoded protein is required for the collagen in bone to become calcified but is also involved in extracellular matrix synthesis and promotion of changes to cell shape. The gene product has been associated with tumor suppression but has also been correlated with metastasis based on changes to cell shape which can promote tumor cell invasion. Three transcript variants encoding different isoforms have been found for this gene. [provided by RefSeq, Jun 2015],

matters needing attention

Avoid repeated freezing and thawing!

Usage suggestions

This product can be used in immunological reaction related experiments. For more information, please consult technical personnel.



Various whole cell lysates were separated by 4-20% SDS-PAGE, and the membrane was blotted with anti-SPARC antibody. The HRP-conjugated Goat anti-Rabbit IgG (H + L) antibody was used to detect the antibody. Lane 1: A375 Predicted band size: 35kDa Observed band size: 39kDa

