



Involucrin Rabbit mAb

Catalog No	YP-rAb-17323
Isotype	IgG
Reactivity	Human,Rat
Applications	WB,IHC,IF,ELISA
Gene Name	IVL
Protein Name	Involucrin
Purification Process	Protein A
Specificity	Endogenous
Formulation	PBS, 50% glycerol, 0.05% Proclin 300, 0.05%BSA
Source	Monoclonal, Rabbit,IgG
Dilution	IHC 1:1000-1:2000; WB 1:2000-1:10000; IF 1:200-1:1000; ELISA 1:5000-1:20000; Note: For IHC, we suggest antigen retrieval with TE buffer pH 9.0
Concentration	0.5 mg/ml
Purity	≥90%
Storage Stability	-15° C to -25° C/1 year(Do not lower than -25° C)
Synonyms	IVL ; Involucrin
Observed Band	118kD
Calculated Molecular Weight	68kD
Cell Pathway	Cytoplasm. Constituent of the scaffolding of the cornified envelope.
Tissue Specificity	Keratinocytes of epidermis and other stratified squamous epithelia.
Function	Part of the insoluble cornified cell envelope (CE) of stratified squamous epithelia.,PTM:Substrate of transglutaminase. Some glutamines and lysines are cross-linked to other involucrin molecules, to other proteins such as keratin, desmoplakin, periplakin and envoplakin, and to lipids like omega-hydroxyceramide.,similarity:Belongs to the involucrin family.,subcellular location:Constituent of the scaffolding of the cornified envelope.,subunit:Directly or indirectly cross-linked to cornefilin (CNFN).,tissue specificity:Keratinocytes of epidermis and other stratified squamous epithelia.,
Background	involucrin(IVL) Homo sapiens Involucrin, a component of the keratinocyte crosslinked envelope, is found in the cytoplasm and crosslinked to membrane proteins by transglutaminase. This gene is mapped to 1q21, among calpactin I





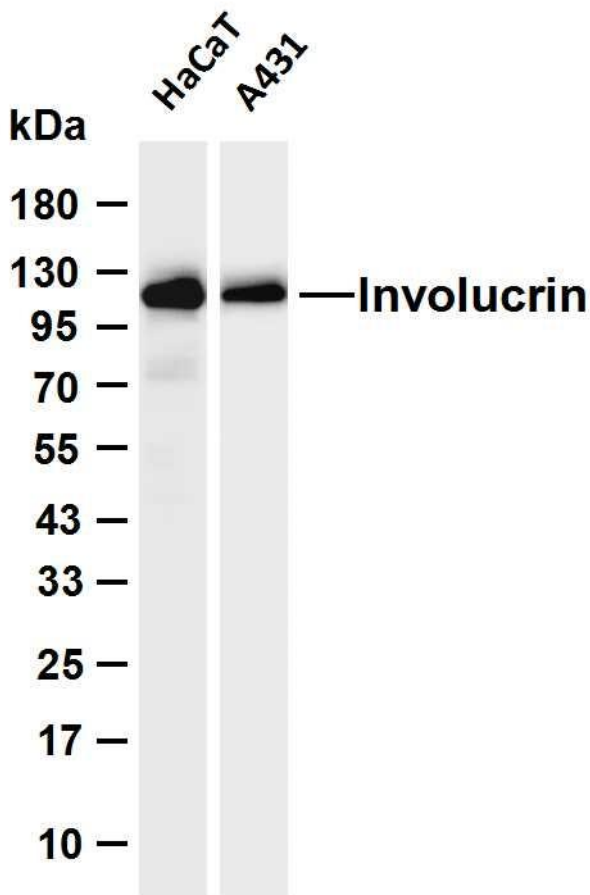
light chain, trichohyalin, profilaggrin, loricrin, and calcyclin. [provided by RefSeq, Jul 2008],

matters needing attention

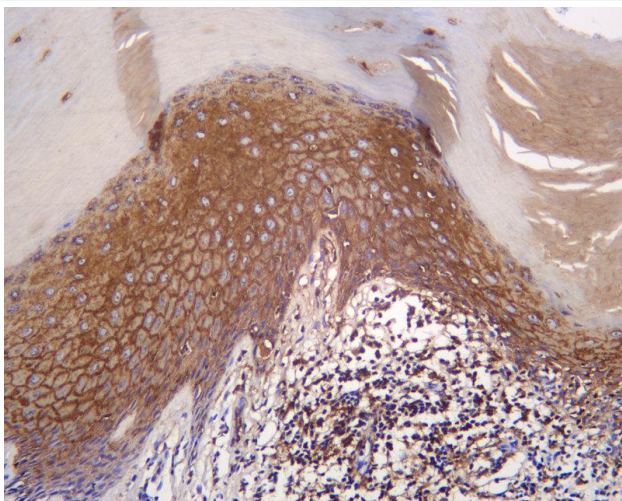
Avoid repeated freezing and thawing!

Usage suggestions

This product can be used in immunological reaction related experiments. For more information, please consult technical personnel.



Various whole cell lysates were separated by 4-20% SDS-PAGE, and the membrane was blotted with anti-Involutrin antibody. The HRP-conjugated Goat anti-Rabbit IgG (H + L) antibody was used to detect the antibody. Lane 1: HaCaT Lane 2: A431 Predicted band size: 68kDa Observed band size: 118kDa



Human skin was stained with anti-Involutrin Rabbit antibody

杭州臻优品生物科技有限公司

热销产品:

蛋白、一抗、抗体对、ELISA试剂盒、生化试剂盒
CCK8试剂盒、QPCR检测试剂盒

检测服务:

ELISA检测及定制服务 | 生化检测 | PCR、QPCR检测 | WB检测
ICO-IP检测 | 切片 | 染色 | 免疫组化 | 免疫荧光 | 透射电镜全套
| 宏基因组、转录组、基因组、蛋白组、代谢组测序



关注官网



关注客服