



# KHK Rabbit mAb

<b>Catalog No</b>	YP-rAb-17322
<b>Isotype</b>	IgG
<b>Reactivity</b>	Human,Mouse,Rat
<b>Applications</b>	WB,IHC,IF,IP,ELISA
<b>Gene Name</b>	KHK
<b>Protein Name</b>	KHK
<b>Purification Process</b>	Protein A
<b>Specificity</b>	Endogenous
<b>Formulation</b>	PBS, 50% glycerol, 0.05% Proclin 300, 0.05%BSA
<b>Source</b>	Monoclonal, Rabbit,IgG
<b>Dilution</b>	IHC 1:200-1:1000; WB 1:2000-1:10000; IF 1:200-1:1000; ELISA 1:5000-1:20000; IP 1:50-1:200; Note: For IHC, we suggest antigen retrieval with TE buffer pH 9.0
<b>Concentration</b>	0.5 mg/ml
<b>Purity</b>	≥90%
<b>Storage Stability</b>	-15° C to -25° C/1 year(Do not lower than -25° C)
<b>Synonyms</b>	
<b>Observed Band</b>	33kD
<b>Calculated Molecular Weight</b>	33kD
<b>Cell Pathway</b>	cytoplasm,cytosol,extracellular exosome,
<b>Tissue Specificity</b>	Most abundant in liver, kidney, gut, spleen and pancreas. Low levels also found in adrenal, muscle, brain and eye.
<b>Function</b>	Catalytic activity:ATP + D-fructose = ADP + D-fructose 1-phosphate.,Caution:Form C has not yet been fully sequenced in its N-terminal (from 1-69).,Disease:Defects in KHK are the cause of fructosuria [MIM:229800]. Fructosuria is a benign defect of intermediary metabolism.,enzyme regulation:Requires potassium. Inhibition by ADP.,pathway:Carbohydrate metabolism; fructose metabolism.,similarity:Belongs to the carbohydrate kinase pfkB family.,subunit:Dimer of A-A, A-C or C-C.,tissue specificity:Most abundant in liver, kidney, gut, spleen and pancreas. Low levels also found in adrenal, muscle, brain and eye.,
<b>Background</b>	This gene encodes ketohexokinase that catalyzes conversion of fructose to fructose-1-phosphate. The product of this gene is the first enzyme with a specialized pathway that catabolizes dietary fructose. Alternatively spliced





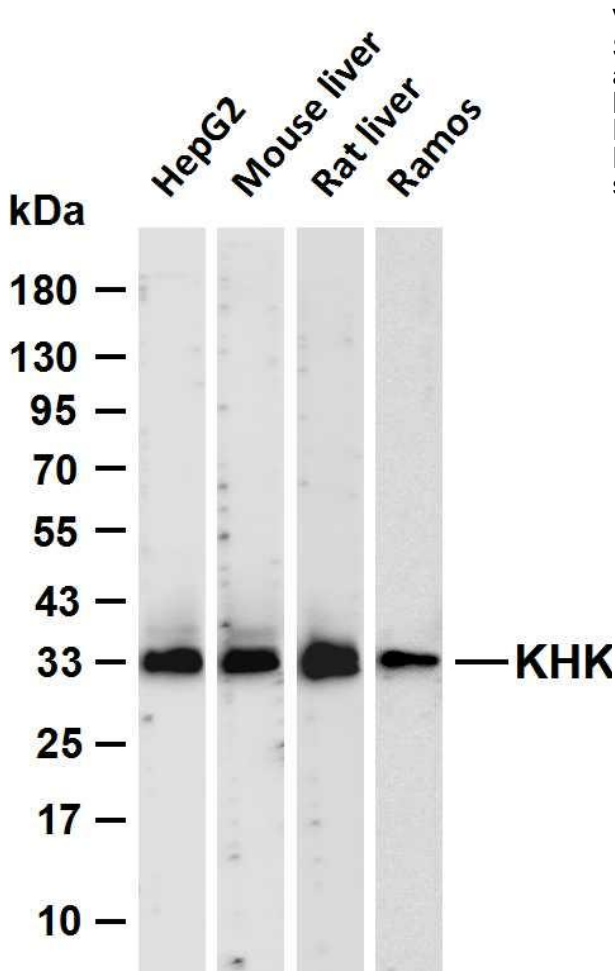
transcript variants encoding different isoforms have been identified. [provided by RefSeq, Jul 2008],

**matters needing attention**

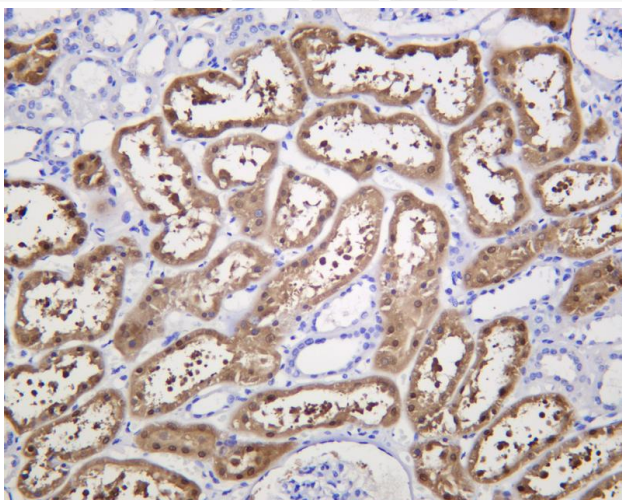
Avoid repeated freezing and thawing!

**Usage suggestions**

This product can be used in immunological reaction related experiments. For more information, please consult technical personnel.



Various whole cell lysates were separated by 4-20% SDS-PAGE, and the membrane was blotted with anti-KHK antibody. The HRP-conjugated Goat anti-Rabbit IgG (H + L) antibody was used to detect the antibody. Lane 1: HepG2 Lane 2: Mouse liver Lane 3: Rat liver Lane 4: Ramos Predicted band size: 33kDa Observed band size: 33kDa



Human kidney was stained with anti-KHK Rabbit antibody

杭州臻优品生物科技有限公司

热销产品:

蛋白、一抗、抗体对、ELISA试剂盒、生化试剂盒  
CCK8试剂盒、QPCR检测试剂盒

检测服务:

ELISA检测及定制服务 | 生化检测 | PCR、QPCR检测 | WB检测  
ICO-IP检测 | 切片 | 染色 | 免疫组化 | 免疫荧光 | 透射电镜全套  
| 宏基因组、转录组、基因组、蛋白组、代谢组测序



关注官网



关注客服