



Aurora C Rabbit mAb

Catalog No	YP-rAb-17308
Isotype	IgG
Reactivity	Human
Applications	WB,IF,ELISA
Gene Name	AURKC
Protein Name	Serine/threonine-protein kinase 13/Aurora kinase C
Purification Process	Protein A
Specificity	Endogenous
Formulation	PBS, 50% glycerol, 0.05% Proclin 300, 0.05%BSA
Source	Monoclonal, Rabbit,IgG
Dilution	WB 1:500-1:2000; IF 1:200-1:1000; ELISA 1:5000-1:20000;
Concentration	0.5 mg/ml
Purity	≥90%
Storage Stability	-15° C to -25° C/1 year(Do not lower than -25° C)
Synonyms	AIE2 ; AIK3 ; AIRK3 ; ARK3 ; STK13 ; Aurora kinase C ; Aurora 3 ; Aurora/IPL1 related kinase 3 ; ARK 3 ; Aurora related kinase 3 ; Serine/threonine protein kinase 13 ; Aurora/IPL1related kinase 3 ; Aurorarelated kinase 3 ; Serine/threonineprotein kinase 13 ; Serine/threonineprotein kinase auroraC ;
Observed Band	36kD
Calculated Molecular Weight	36kD
Cell Pathway	Nucleus,Chromosome,Chromosome, centromere,Cytoplasm, cytoskeleton, spindle,Note: Distributes in the condensed chromosomes during prophase to metaphase. After entering anaphase, there is a dissociation from separated chromosomes and a redistribution to midzone microtubules, and finally remains in the midbody during cytokinesis.
Tissue Specificity	Tissue specificity:Isoform 1 and isoform 2 are expressed in testis. Elevated expression levels were seen only in a subset of cancer cell lines such as Hep-G2, Huh-7 and HeLa. Expression is maximum at M phase.Induction:Expression is cell cycle-regulated, with an increase during G2 and M phases.
Function	Serine/threonine-protein kinase component of the chromosomal passenger complex (CPC), a complex that acts as a key regulator of mitosis. The CPC complex has essential functions at the centromere in ensuring correct chromosome alignment and segregation and is required for chromatin-induced





microtubule stabilization and spindle assembly. Also plays a role in meiosis and more particularly in spermatogenesis. Has redundant cellular functions with AURKB and can rescue an AURKB knockdown. Like AURKB, AURKC phosphorylates histone H3 at 'Ser-10' and 'Ser-28'. AURKC phosphorylates the CPC complex subunits BIRC5/survivin and INCENP leading to increased AURKC activity. Phosphorylates TACC1, another protein involved in cell division, at 'Ser-228'.

Background

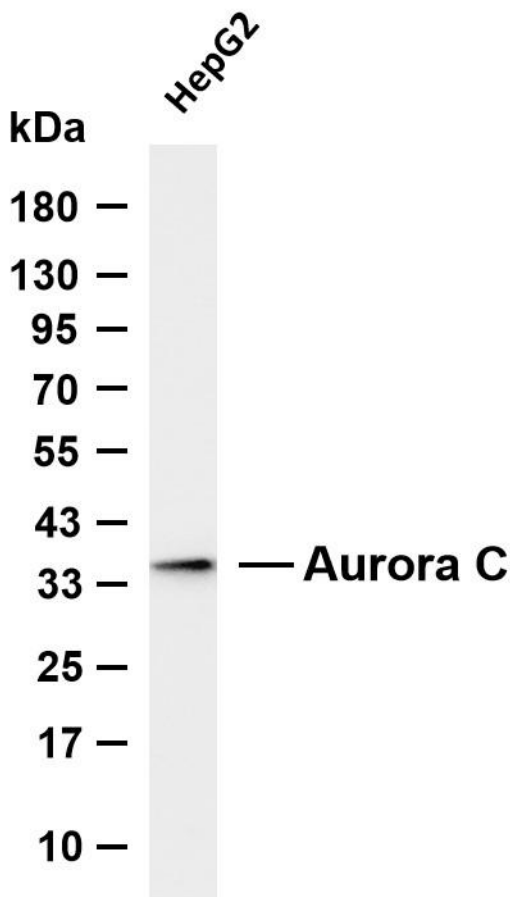
This gene encodes a member of the Aurora subfamily of serine/threonine protein kinases. The encoded protein is a chromosomal passenger protein that forms complexes with Aurora-B and inner centromere proteins and may play a role in organizing microtubules in relation to centrosome/spindle function during mitosis. This gene is overexpressed in several cancer cell lines, suggesting an involvement in oncogenic signal transduction. Alternative splicing results in multiple transcript variants. [provided by RefSeq, Jul 2008]

matters needing attention

Avoid repeated freezing and thawing!

Usage suggestions

This product can be used in immunological reaction related experiments. For more information, please consult technical personnel.



Various whole cell lysates were separated by 4-20% SDS-PAGE, and the membrane was blotted with anti-Aurora C antibody. The HRP-conjugated Goat anti-Rabbit IgG (H + L) antibody was used to detect the antibody. Lane 1: HepG2 Predicted band size: 36kDa Observed band size: 36kDa

