



PAI-1 Rabbit mAb

Catalog No	YP-rAb-17306
Isotype	IgG
Reactivity	Human,Mouse,Rat,Goat,Rabbit
Applications	WB,IHC,IF,IP,ELISA
Gene Name	SERPINE1
Protein Name	Plasminogen activator inhibitor 1
Purification Process	Protein A
Specificity	Endogenous
Formulation	PBS, 50% glycerol, 0.05% Proclin 300, 0.05%BSA
Source	Monoclonal, Rabbit,IgG
Dilution	IHC 1:200-1:1000; WB 1:2000-1:10000; IF 1:200-1:1000; ELISA 1:5000-1:20000; IP 1:50-1:200; Note: For IHC, we suggest antigen retrieval with TE buffer pH 9.0
Concentration	0.5 mg/ml
Purity	≥90%
Storage Stability	-15° C to -25° C/1 year(Do not lower than -25° C)
Synonyms	SERPINE1 ; PAI1 ; PLANH1 ; Plasminogen activator inhibitor 1 ; PAI ; PAI-1 ; Endothelial plasminogen activator inhibitor ; Serpin E1
Observed Band	45kD
Calculated Molecular Weight	45kD
Cell Pathway	Secreted .
Tissue Specificity	Expressed in endothelial cells (PubMed:2430793, PubMed:3097076). Found in plasma, platelets, and hepatoma and fibrosarcoma cells.
Function	Disease:Defects in SERPINE1 are the cause of plasminogen activator inhibitor-1 deficiency (PAI-1 deficiency) [MIM:173360]. This deficiency is characterized by abnormal bleeding due to SERPINE1 defect in the plasma.,Disease:High concentrations of SERPINE1 have been associated with thrombophilia [MIM:188050]; an autosomal dominant disorder in which affected individuals are prone to develop serious spontaneous thrombosis.,Function:This inhibitor acts as 'bait' for tissue plasminogen activator, urokinase, and protein C. Its rapid interaction with TPA may function as a major control point in the regulation of fibrinolysis.,online information:Plasminogen activator inhibitor-1 entry,PTM:Inactivated by proteolytic attack of the urokinase-type (u-PA) and the tissue-type (TPA), cleaving the 369-Arg- -Met-370 bond.,similarity:Belongs to the serpin family.,subunit:Interacts with VTN. Binds LRP1B; binding is followed by





internalization and degradation.,tissue specificity:Found in plasma and platelets and in endothelial, hepatoma and fibrosarcoma cells.,

Background

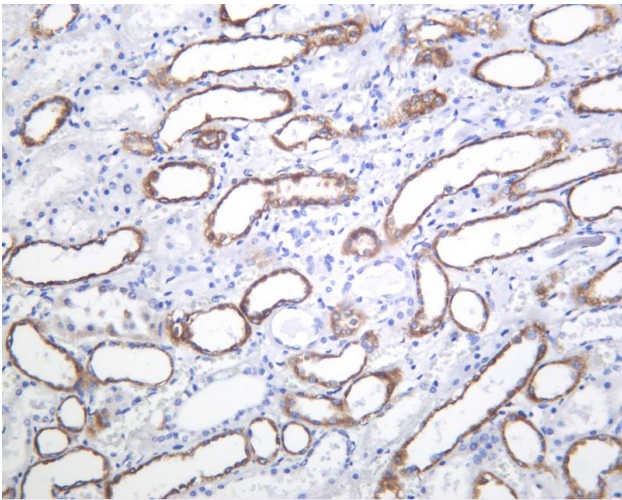
This gene encodes a member of the serine proteinase inhibitor (serpin) superfamily. This member is the principal inhibitor of tissue plasminogen activator (tPA) and urokinase (uPA), and hence is an inhibitor of fibrinolysis. Defects in this gene are the cause of plasminogen activator inhibitor-1 deficiency (PAI-1 deficiency), and high concentrations of the gene product are associated with thrombophilia. Alternatively spliced transcript variants encoding different isoforms have been found for this gene. [provided by RefSeq, Sep 2009],

matters needing attention

Avoid repeated freezing and thawing!

Usage suggestions

This product can be used in immunological reaction related experiments. For more information, please consult technical personnel.

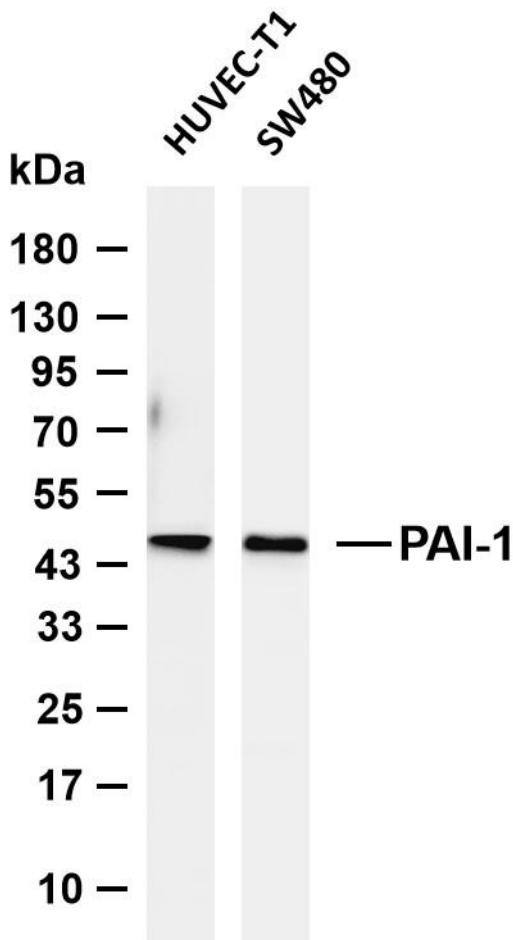


Human kidney was stained with anti-PAI-1 Rabbit antibody





Various whole cell lysates were separated by 4-20% SDS-PAGE, and the membrane was blotted with anti-PAI-1 antibody. The HRP-conjugated Goat anti-Rabbit IgG (H + L) antibody was used to detect the antibody. Lane 1: HUVEC-T1 Lane 2: SW480
Predicted band size: 45kDa Observed band size: 45kDa



杭州臻优品生物科技有限公司

热销产品:

蛋白、一抗、抗体对、ELISA试剂盒、生化试剂盒
CCK8试剂盒、QPCR检测试剂盒

检测服务:

ELISA检测及定制服务 | 生化检测 | PCR、QPCR检测 | WB检测
ICO-IP检测 | 切片 | 染色 | 免疫组化 | 免疫荧光 | 透射电镜全套
| 宏基因组、转录组、基因组、蛋白组、代谢组测序



关注官网



关注客服