



# DCLK1 Rabbit mAb

<b>Catalog No</b>	YP-rAb-17305
<b>Isotype</b>	IgG
<b>Reactivity</b>	Human,Mouse,Rat
<b>Applications</b>	WB,IHC,IF,ELISA
<b>Gene Name</b>	DCLK1 DCAMKL1 DCDC3A KIAA0369
<b>Protein Name</b>	DCLK1
<b>Purification Process</b>	Protein A
<b>Specificity</b>	Endogenous
<b>Formulation</b>	PBS, 50% glycerol, 0.05% Proclin 300, 0.05%BSA
<b>Source</b>	Monoclonal, Rabbit,IgG
<b>Dilution</b>	IHC 1:200-1:1000; WB 1:2000-1:10000; IF 1:200-1:1000; ELISA 1:5000-1:20000; Note: For IHC, we suggest antigen retrieval with TE buffer pH 9.0
<b>Concentration</b>	0.5 mg/ml
<b>Purity</b>	≥90%
<b>Storage Stability</b>	-15° C to -25° C/1 year(Do not lower than -25° C)
<b>Synonyms</b>	
<b>Observed Band</b>	82kD
<b>Calculated Molecular Weight</b>	82kD
<b>Cell Pathway</b>	intracellular,integral component of plasma membrane,postsynaptic density,
<b>Tissue Specificity</b>	In fetal tissues, highly expressed in brain, detectable in lung and liver, but not in kidney. In adult tissues, expressed ubiquitously in the brain, detectable in the heart, liver, spleen, thymus, prostate, testis, ovary, small intestine and colon. The type A isoforms seem to be expressed predominantly in fetal brain whereas type B isoforms are expressed abundantly in both fetal and adult brain.
<b>Function</b>	Alternative products:Additional isoforms seem to exist. Type A (AS and AL) and type B (BS and BL) isoforms differ respectively by the presence or absence of the doublecortin domain. An alternative splicing occurring in 3' of the mRNA produces the long (L) instead of the short (S) isoforms.Catalytic activity:ATP + a protein = ADP + a phosphoprotein.,Function:Probable kinase that may be involved in a calcium-signaling pathway controlling neuronal migration in the developing brain. May also participate in functions of the mature nervous system.,similarity:Belongs to the protein kinase superfamily. CAMK Ser/Thr protein kinase family. CaMK subfamily.,similarity:Contains 1 protein kinase domain.,similarity:Contains 2 doublecortin domains.,tissue specificity:In fetal tissues, highly expressed in brain,





detectable in lung and liver, but not in kidney. In adult tissues, expressed ubiquitously in the brain, detectable in the heart, liver, spleen, thymus, prostate, testis, ovary, small intestine and colon. The type A isoforms seem to be expressed predominantly in fetal brain whereas type B isoforms are expressed abundantly in both fetal and adult brain.,

## Background

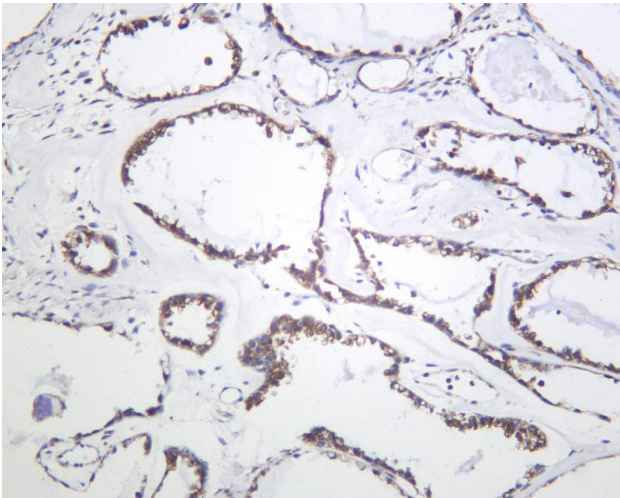
This gene encodes a member of the protein kinase superfamily and the doublecortin family. The protein encoded by this gene contains two N-terminal doublecortin domains, which bind microtubules and regulate microtubule polymerization, a C-terminal serine/threonine protein kinase domain, which shows substantial homology to Ca<sup>2+</sup>/calmodulin-dependent protein kinase, and a serine/proline-rich domain in between the doublecortin and the protein kinase domains, which mediates multiple protein-protein interactions. The microtubule-polymerizing activity of the encoded protein is independent of its protein kinase activity. The encoded protein is involved in several different cellular processes, including neuronal migration, retrograde transport, neuronal apoptosis and neurogenesis. This gene is up-regulated by brain-derived neurotrophic factor and associated with memory and general cognitive abilities. Multiple transcript variants generated by two alternative promoter usage and alternative splicing have been reported, but the full-length nature and biological validity of some variants have not been defined. These variants encode different isoforms, which are differentially expressed and have different kinase activities.[provided by RefSeq, Sep 2010],

## matters needing attention

Avoid repeated freezing and thawing!

## Usage suggestions

This product can be used in immunological reaction related experiments. For more information, please consult technical personnel.

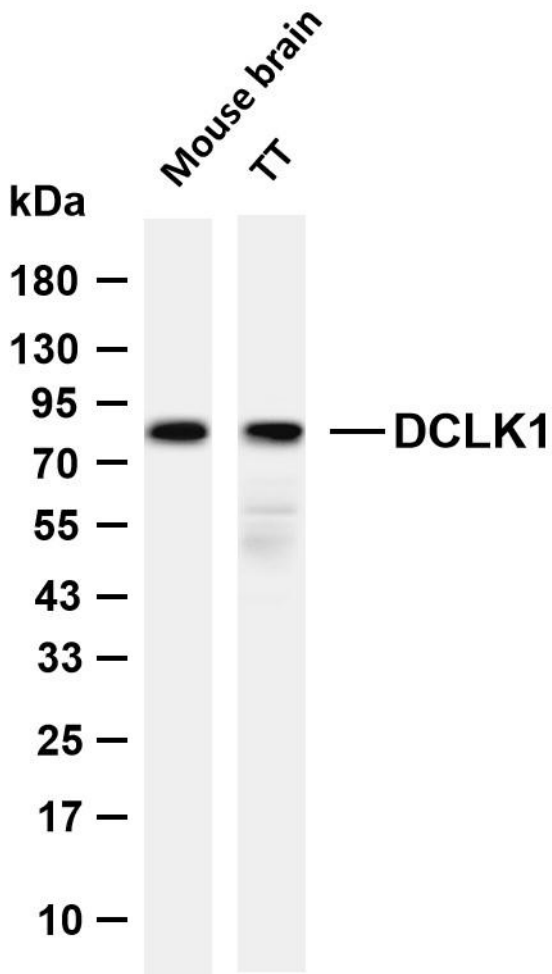


Human ovarian carcinoma was stained with anti-DCLK1 Rabbit antibody





Various whole cell lysates were separated by 4-20% SDS-PAGE, and the membrane was blotted with anti-DCLK1 antibody. The HRP-conjugated Goat anti-Rabbit IgG (H + L) antibody was used to detect the antibody. Lane 1: Mouse brain Lane 2: TT Predicted band size: 82kDa Observed band size: 82kDa



## 杭州臻优品生物科技有限公司

### 热销产品:

蛋白、一抗、抗体对、ELISA试剂盒、生化试剂盒  
CCK8试剂盒、QPCR检测试剂盒

### 检测服务:

ELISA检测及定制服务 | 生化检测 | PCR、QPCR检测 | WB检测  
ICO-IP检测 | 切片 | 染色 | 免疫组化 | 免疫荧光 | 透射电镜全套  
| 宏基因组、转录组、基因组、蛋白组、代谢组测序



关注官网



关注客服