



# SREBP-1 Rabbit mAb

<b>Catalog No</b>	YP-rAb-17304
<b>Isotype</b>	IgG
<b>Reactivity</b>	Human,Mouse,Rat
<b>Applications</b>	WB,IHC,IF,ELISA
<b>Gene Name</b>	SREBF1 BHLHD1 SREBP1
<b>Protein Name</b>	SREBP-1
<b>Purification Process</b>	Protein A
<b>Specificity</b>	Endogenous
<b>Formulation</b>	PBS, 50% glycerol, 0.05% Proclin 300, 0.05%BSA
<b>Source</b>	Monoclonal, Rabbit,IgG
<b>Dilution</b>	IHC 1:200-1:1000; WB 1:2000-1:10000; IF 1:200-1:1000; ELISA 1:5000-1:20000; Note: For IHC, we suggest antigen retrieval with TE buffer pH 9.0
<b>Concentration</b>	0.5 mg/ml
<b>Purity</b>	≥90%
<b>Storage Stability</b>	-15° C to -25° C/1 year(Do not lower than -25° C)
<b>Synonyms</b>	Sterol regulatory element-binding protein 1 ; SREBP-1 ; Class D basic helix-loop-helix protein 1 ; bHLHD1 ; Sterol regulatory element-binding transcription factor 1 ; [Cleaved into: Processed sterol regulatory element-binding protein 1]
<b>Observed Band</b>	125kD
<b>Calculated Molecular Weight</b>	122kD
<b>Cell Pathway</b>	[Sterol regulatory element-binding protein 1]: Endoplasmic reticulum membrane ; Multi-pass membrane protein . Golgi apparatus membrane ; Multi-pass membrane protein . Cytoplasmic vesicle, COPII-coated vesicle membrane ; Multi-pass membrane protein . At high sterol concentrations, the SCAP-SREBP is retained in the endoplasmic reticulum. Low sterol concentrations promote recruitment into COPII-coated vesicles and transport of the SCAP-SREBP to the Golgi, where it is processed. . ; [Processed sterol regulatory element-binding protein 1]: Nucleus . ; [Isoform SREBP-1aDelta]: Nucleus . ; [Isoform SREBP-1cDelta]: Nucleus .
<b>Tissue Specificity</b>	Expressed in a wide variety of tissues, most abundant in liver and adrenal gland (PubMed:8402897). In fetal tissues lung and liver shows highest expression (PubMed:8402897). . ; [Isoform SREBP-1A]: Predominates in hepatoma cell lines (PubMed:8402897). Also expressed in kidney, brain, white fat, and muscle (PubMed:8402897). . ; [Isoform SREBP-1C]: Predominantly expressed in liver and

## 杭州臻优品生物科技有限公司

### 热销产品:

蛋白、一抗、抗体对、ELISA试剂盒、生化试剂盒  
CCK8试剂盒、QPCR检测试剂盒

### 检测服务:

ELISA检测及定制服务 | 生化检测 | PCR、QPCR检测 | WB检测  
ICO-IP检测 | 切片 | 染色 | 免疫组化 | 免疫荧光 | 透射电镜全套  
| 宏基因组、转录组、基因组、蛋白组、代谢组测序



关注官网



关注客服



adipose tissues (PubMed:8402897). Also expressed in kidney, brain, white fat, and muscle (PubMed:8402897).

## Function

Alternative products: Additional isoforms seem to exist, Function: Transcriptional activator required for lipid homeostasis. Regulates transcription of the LDL receptor gene as well as the fatty acid and to a lesser degree the cholesterol synthesis pathway (By similarity). Binds to the sterol regulatory element 1 (SRE-1) (5'-ATCACCCAC-3'). Has dual sequence specificity binding to both an E-box motif (5'-ATCACGTGA-3') and to SRE-1 (5'-ATCACCCAC-3')., online information: Sterol regulatory element-binding protein entry, PTM: At low cholesterol the SCAP/SREBP complex is recruited into COPII vesicles for export from the ER. In the Golgi complex SREBPs are cleaved sequentially by site-1 and site-2 protease. The first cleavage by site-1 protease occurs within the luminal loop, the second cleavage by site-2 protease occurs within the first transmembrane domain and releases the transcription factor from the Golgi membrane. Apoptosis triggers cleavage by the cysteine proteases caspase-3 and caspase-7., sequence Caution: Intron retention., similarity: Belongs to the SREBP family., similarity: Contains 1 basic helix-loop-helix (bHLH) domain., subcellular location: Moves from the endoplasmic reticulum to the Golgi in the absence of sterols., subunit: Forms a tight complex with SCAP in the ER membrane. Efficient DNA binding of the soluble transcription factor fragment requires dimerization with another bHLH protein. Interacts with LMNA., tissue specificity: Expressed in a wide variety of tissues, most abundant in liver and adrenal gland. In fetal tissues lung and liver shows highest expression. Isoform SREBP-1C predominates in liver, adrenal gland and ovary, whereas isoform SREBP-1A predominates in hepatoma cell lines. Isoform SREBP-1A and isoform SREBP-1C are found in kidney, brain, white fat, and muscle.,

## Background

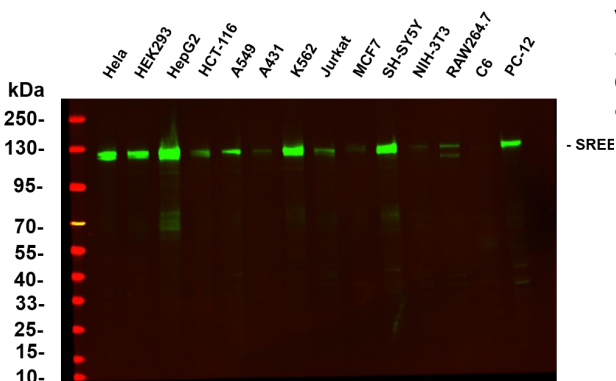
This gene encodes a transcription factor that binds to the sterol regulatory element-1 (SRE1), which is a decamer flanking the low density lipoprotein receptor gene and some genes involved in sterol biosynthesis. The protein is synthesized as a precursor that is attached to the nuclear membrane and endoplasmic reticulum. Following cleavage, the mature protein translocates to the nucleus and activates transcription by binding to the SRE1. Sterols inhibit the cleavage of the precursor, and the mature nuclear form is rapidly catabolized, thereby reducing transcription. The protein is a member of the basic helix-loop-helix-leucine zipper (bHLH-Zip) transcription factor family. This gene is located within the Smith-Magenis syndrome region on chromosome 17. [provided by RefSeq, Mar 2016],

## matters needing attention

Avoid repeated freezing and thawing!

## Usage suggestions

This product can be used in immunological reaction related experiments. For more information, please consult technical personnel.



Various whole cell lysates were separated by 4-20% SDS-PAGE, and the primary antibody was used at 4~C, over night with a 1:5000 dilution. The Dylight 800-conjugated Goat anti-Rabbit antibody

## 杭州臻优品生物科技有限公司

### 热销产品:

蛋白、一抗、抗体对、ELISA试剂盒、生化试剂盒  
CCK8试剂盒、QPCR检测试剂盒

### 检测服务:

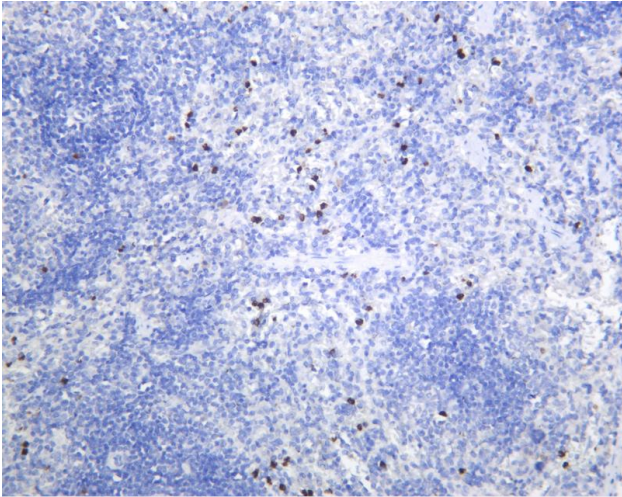
ELISA检测及定制服务 | 生化检测 | PCR、QPCR检测 | WB检测  
ICO-IP检测 | 切片 | 染色 | 免疫组化 | 免疫荧光 | 透射电镜全套  
| 宏基因组、转录组、基因组、蛋白组、代谢组测序



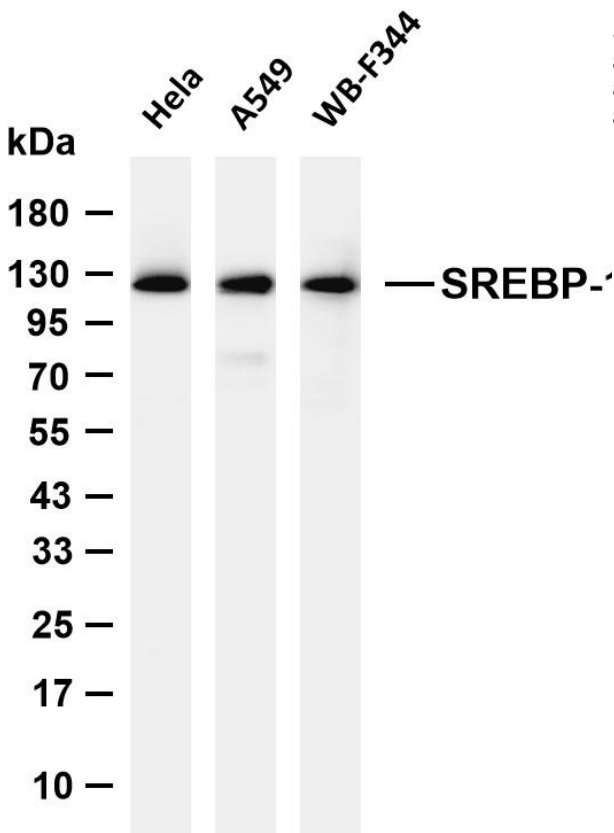
关注官网



关注客服



Rat spleen was stained with anti-SREBP-1 Rabbit antibody



Various whole cell lysates were separated by 4-20% SDS-PAGE, and the membrane was blotted with anti-SREBP-1 antibody. The HRP-conjugated Goat anti-Rabbit IgG (H + L) antibody was used to detect the antibody. Lane 1: HeLa Lane 2: A549 Lane 3: WB-F344  
Predicted band size: 122kDa Observed band size: 125kDa

