



TMEM16A Rabbit mAb

Catalog No	YP-rAb-17300
Isotype	IgG
Reactivity	Human
Applications	WB,IHC,IF,ELISA
Gene Name	ANO1
Protein Name	Anoctamin-1
Purification Process	Protein A
Specificity	Endogenous
Formulation	PBS, 50% glycerol, 0.05% Proclin 300, 0.05%BSA
Source	Monoclonal, Rabbit,IgG
Dilution	IHC 1:200-1:1000; WB 1:2000-1:10000; IF 1:200-1:1000; ELISA 1:5000-1:20000; Note: For IHC, we suggest antigen retrieval with TE buffer pH 9.0
Concentration	0.5 mg/ml
Purity	≥90%
Storage Stability	-15° C to -25° C/1 year(Do not lower than -25° C)
Synonyms	ANO1 ; DOG1 ; ORAOV2 ; TAOS2 ; TMEM16A ; Anoctamin-1 ; Discovered on gastrointestinal stromal tumors protein 1 ; Oral cancer overexpressed protein 2 ; Transmembrane protein 16A ; Tumor-amplified and overexpressed sequence 2
Observed Band	130kD
Calculated Molecular Weight	114kD
Cell Pathway	Cell membrane ; Multi-pass membrane protein . Cytoplasm . Cytoplasmic localization seen in neoplastic cells of head and neck squamous cell carcinoma (HNSCC) tumors. .
Tissue Specificity	Broadly expressed with higher levels in liver, skeletal muscle and gastrointestinal muscles.
Function	Domain:The region spanning the fifth and sixth transmembrane domains probably forms the pore-forming region.,Function:Acts as a calcium-activated chloride channel. Required for normal tracheal development.,similarity:Belongs to the anoctamin family.,tissue specificity:Broadly expressed with higher levels in liver and skeletal muscle.,
Background	domain:The region spanning the fifth and sixth transmembrane domains probably forms the pore-forming region.,function:Acts as a calcium-activated chloride channel. Required for normal tracheal development.,similarity:Belongs to the anoctamin family.,tissue specificity:Broadly expressed with higher levels in liver

杭州臻优品生物科技有限公司

热销产品:

蛋白、一抗、抗体对、ELISA试剂盒、生化试剂盒
CCK8试剂盒、QPCR检测试剂盒

检测服务:

ELISA检测及定制服务 | 生化检测 | PCR、QPCR检测 | WB检测
| CO-IP检测 | 切片 | 染色 | 免疫组化 | 免疫荧光 | 透射电镜全套
| 宏基因组、转录组、基因组、蛋白组、代谢组测序



关注官网



关注客服



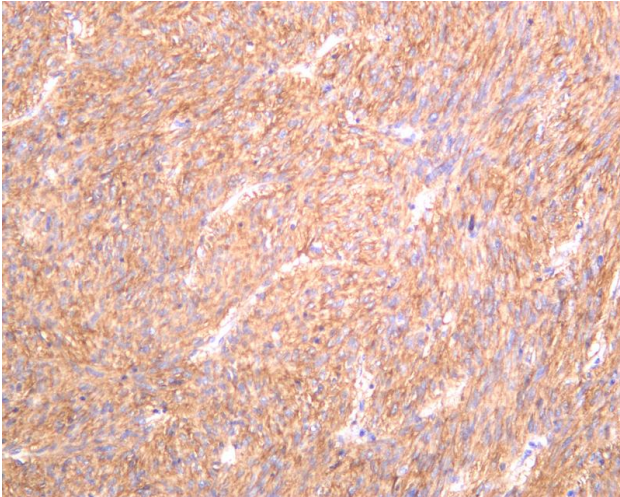
and skeletal muscle.,

matters needing attention

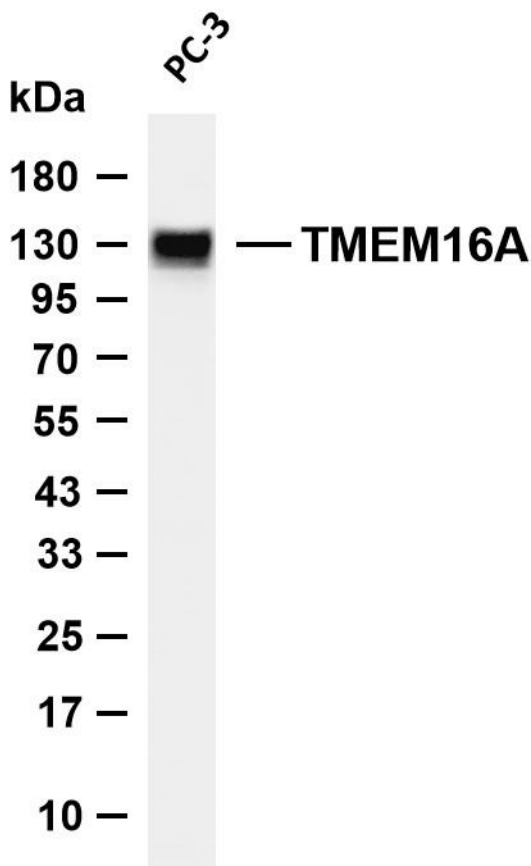
Avoid repeated freezing and thawing!

Usage suggestions

This product can be used in immunological reaction related experiments. For more information, please consult technical personnel.



Human gastrointestinal stromal tumor was stained with anti-TMEM16A Rabbit antibody



Various whole cell lysates were separated by 4-20% SDS-PAGE, and the membrane was blotted with anti-TMEM16A antibody. The HRP-conjugated Goat anti-Rabbit IgG (H + L) antibody was used to detect the antibody. Lane 1: PC-3 Predicted band size: 114kDa Observed band size: 130kDa

