



Islet-1 Rabbit mAb

Catalog No	YP-rAb-17297
Isotype	IgG
Reactivity	Human,Mouse,Rat
Applications	WB,IHC,IF,IP,ELISA
Gene Name	ISL1
Protein Name	Insulin gene enhancer protein ISL-1
Purification Process	Protein A
Specificity	Endogenous
Formulation	PBS, 50% glycerol, 0.05% Proclin 300, 0.05%BSA
Source	Monoclonal, Rabbit,IgG
Dilution	IHC 1:200-1:1000; WB 1:2000-1:10000; IF 1:200-1:1000; ELISA 1:5000-1:20000; IP 1:50-1:200; Note: For IHC, we suggest antigen retrieval with TE buffer pH 9.0
Concentration	0.5 mg/ml
Purity	≥90%
Storage Stability	-15° C to -25° C/1 year(Do not lower than -25° C)
Synonyms	ISL1 ; Insulin gene enhancer protein ISL-1 ; Islet-1
Observed Band	39kD
Calculated Molecular Weight	39kD
Cell Pathway	Nucleus .
Tissue Specificity	Expressed in subsets of neurons of the adrenal medulla and dorsal root ganglion, inner nuclear and ganglion cell layers in the retina, the pineal and some regions of the brain.
Function	Binds to one of the cis-acting domain of the insulin gene enhancer.,similarity:Contains 1 homeobox DNA-binding domain.,similarity:Contains 2 LIM zinc-binding domains.,tissue specificity:Expressed in subsets of neurons of the adrenal medulla and dorsal root ganglion, inner nuclear and ganglion cell layers in the retina, the pineal and some regions of the brain.,
Background	This gene encodes a member of the LIM/homeodomain family of transcription factors. The encoded protein binds to the enhancer region of the insulin gene, among others, and may play an important role in regulating insulin gene expression. The encoded protein is central to the development of pancreatic cell lineages and may also be required for motor neuron generation. Mutations in this





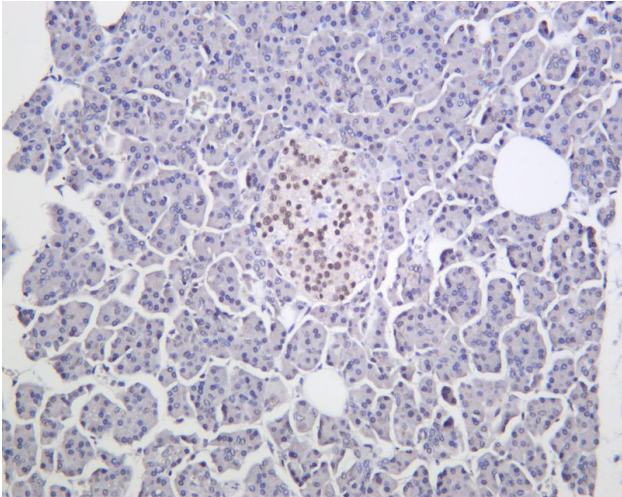
gene have been associated with maturity-onset diabetes of the young. [provided by RefSeq, Jul 2008],

matters needing attention

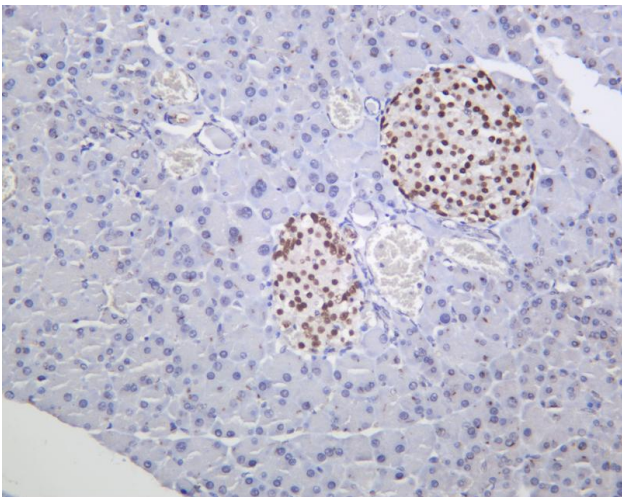
Avoid repeated freezing and thawing!

Usage suggestions

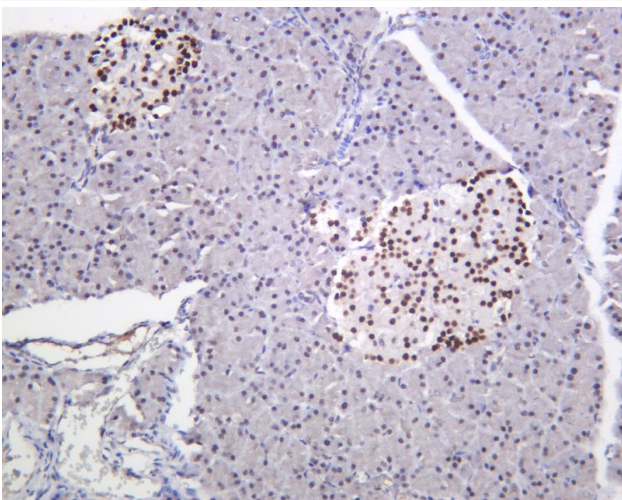
This product can be used in immunological reaction related experiments. For more information, please consult technical personnel.



Human pancreas was stained with anti-Islet-1 Rabbit antibody



Mouse pancreas was stained with anti-Islet-1 Rabbit antibody



Rat pancreas was stained with anti-Islet-1 Rabbit antibody

杭州臻优品生物科技有限公司

热销产品:

蛋白、一抗、抗体对、ELISA试剂盒、生化试剂盒
CCK8试剂盒、QPCR检测试剂盒

检测服务:

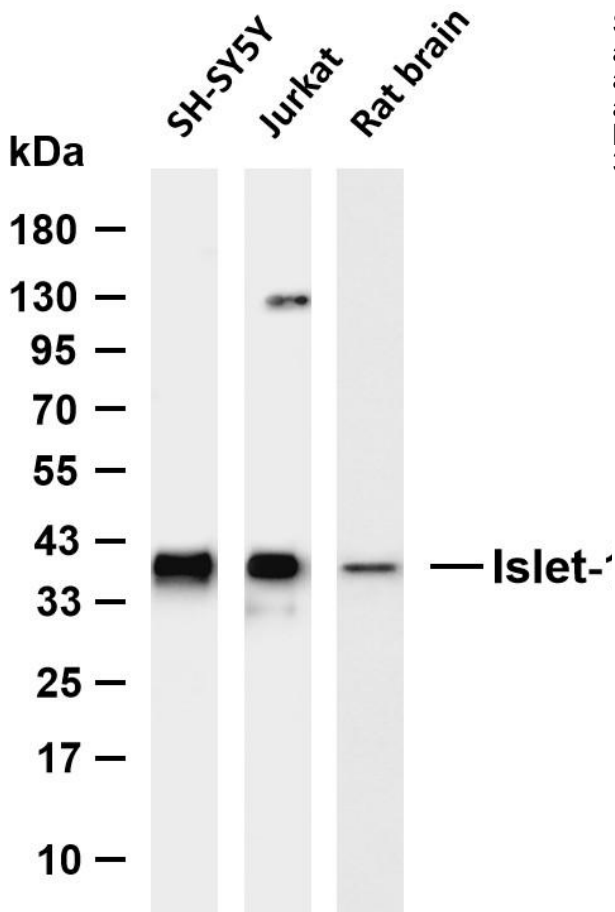
ELISA检测及定制服务 | 生化检测 | PCR、QPCR检测 | WB检测
ICO-IP检测 | 切片 | 染色 | 免疫组化 | 免疫荧光 | 透射电镜全套
| 宏基因组、转录组、基因组、蛋白组、代谢组测序



关注官网



关注客服



Various whole cell lysates were separated by 4-20% SDS-PAGE, and the membrane was blotted with anti-Islet-1 antibody. The HRP-conjugated Goat anti-Rabbit IgG (H + L) antibody was used to detect the antibody. Lane 1: SH-SY5Y Lane 2: Jurkat Lane 3: Rat brain Predicted band size: 39kDa Observed band size: 39kDa

