



# Integrin $\alpha$ 2 Rabbit mAb

<b>Catalog No</b>	YP-rAb-17293
<b>Isotype</b>	IgG
<b>Reactivity</b>	Human,Mouse,Rat
<b>Applications</b>	WB,IHC,IF,IP,ELISA
<b>Gene Name</b>	ITGA2
<b>Protein Name</b>	Integrin alpha-2
<b>Purification Process</b>	Protein A
<b>Specificity</b>	Endogenous
<b>Formulation</b>	PBS, 50% glycerol, 0.05% Proclin 300, 0.05%BSA
<b>Source</b>	Monoclonal, Rabbit,IgG
<b>Dilution</b>	IHC 1:200-1:1000; WB 1:2000-1:10000; IF 1:200-1:1000; ELISA 1:5000-1:20000; IP 1:50-1:200; Note: For IHC, we suggest antigen retrieval with TE buffer pH 9.0
<b>Concentration</b>	0.5 mg/ml
<b>Purity</b>	≥90%
<b>Storage Stability</b>	-15° C to -25° C/1 year(Do not lower than -25° C)
<b>Synonyms</b>	ITGA2 ; CD49B ; Integrin alpha-2 ; CD49 antigen-like family member B ; Collagen receptor ; Platelet membrane glycoprotein Ia ; GPIa ; VLA-2 subunit alpha ; CD49b
<b>Observed Band</b>	150kD
<b>Calculated Molecular Weight</b>	129kD
<b>Cell Pathway</b>	Membrane; Single-pass type I membrane protein.
<b>Tissue Specificity</b>	Endothelial cell,Liver,Platelet,
<b>Function</b>	Domain:The integrin I-domain (insert) is a VWFA domain. Integrins with I-domains do not undergo protease cleavage.,Function:Integrin alpha-2/beta-1 is a receptor for laminin, collagen, collagen C-propeptides, fibronectin and E-cadherin. It recognizes the proline-hydroxylated sequence G-F-P-G-E-R in collagen. It is responsible for adhesion of platelets and other cells to collagens, modulation of collagen and collagenase gene expression, force generation and organization of newly synthesized extracellular matrix.,polymorphism:Position 534 is associated with platelet-specific alloantigen HPA-5. (Br). HPA-5A/Br(a) has Lys-534 and HPA-5B/Br(b) has Glu-534. HPA-5B is involved in neonatal alloimmune thrombocytopenia (NAIT or NATP). The Lys-534-Glu polymorphism may play a role in coronary artery disease (CAD).,similarity:Belongs to the integrin alpha

## 杭州臻优品生物科技有限公司

### 热销产品:

蛋白、一抗、抗体对、ELISA试剂盒、生化试剂盒  
CCK8试剂盒、QPCR检测试剂盒

### 检测服务:

ELISA检测及定制服务 | 生化检测 | PCR、QPCR检测 | WB检测  
ICO-IP检测 | 切片 | 染色 | 免疫组化 | 免疫荧光 | 透射电镜全套  
| 宏基因组、转录组、基因组、蛋白组、代谢组测序



关注官网



关注客服



chain family.,similarity:Contains 1 VWFA domain.,similarity:Contains 7 FG-GAP repeats.,subunit:Heterodimer of an alpha and a beta subunit. Alpha-2 associates with beta-1. Interacts with HPS5 and RAB21. Binds to human echoviruses 1 and 8 capsid proteins and acts as a receptor for these viruses. Interacts (via ITAG2 I-domain) with rotavirus A VP4; this interaction only occurs in rotavirus integrin-dependent strains, for which ITGA2 acts as a receptor.,

### Background

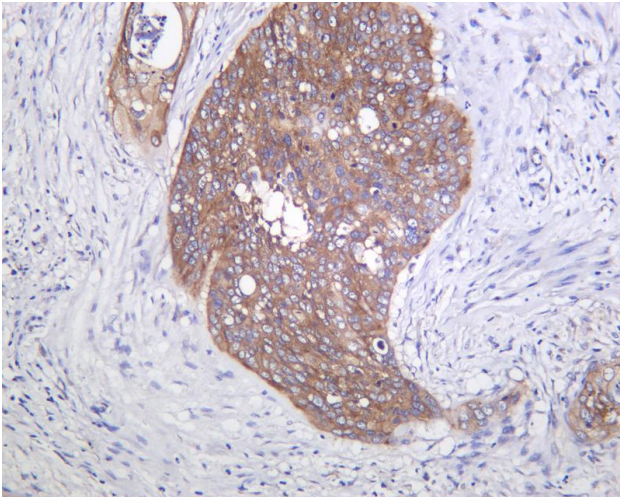
integrin subunit alpha 2(ITGA2) Homo sapiens This gene encodes the alpha subunit of a transmembrane receptor for collagens and related proteins. The encoded protein forms a heterodimer with a beta subunit and mediates the adhesion of platelets and other cell types to the extracellular matrix. Loss of the encoded protein is associated with bleeding disorder platelet-type 9. Antibodies against this protein are found in several immune disorders, including neonatal alloimmune thrombocytopenia. This gene is located adjacent to a related alpha subunit gene. Alternative splicing results in multiple transcript variants. [provided by RefSeq, Aug 2012],

### matters needing attention

Avoid repeated freezing and thawing!

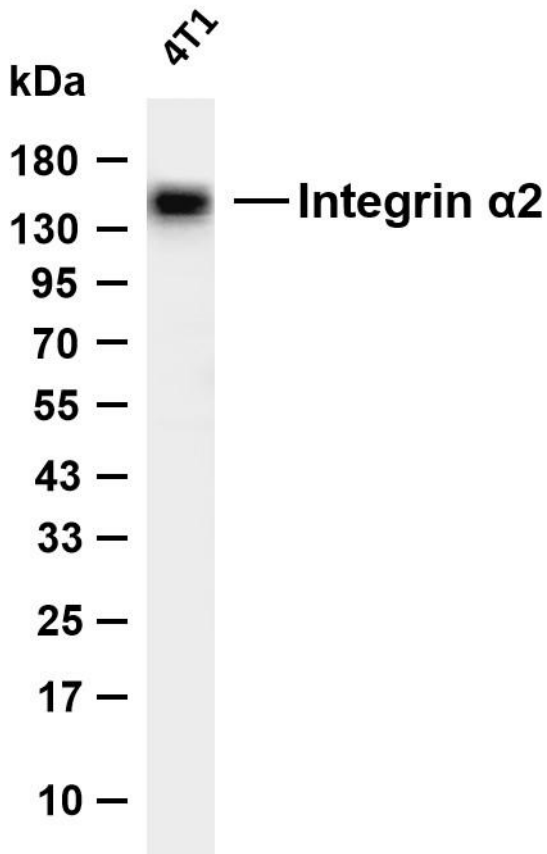
### Usage suggestions

This product can be used in immunological reaction related experiments. For more information, please consult technical personnel.



Human cervical cancer was stained with anti-Integrin  $\alpha$  2 Rabbit antibody





Various whole cell lysates were separated by 4-20% SDS-PAGE, and the membrane was blotted with anti-Integrin  $\alpha 2$  antibody. The HRP-conjugated Goat anti-Rabbit IgG (H + L) antibody was used to detect the antibody. Lane 1: 4T1 Predicted band size: 129kDa Observed band size: 150kDa

