



# PFKFB3 Rabbit mAb

<b>Catalog No</b>	YP-rAb-17289
<b>Isotype</b>	IgG
<b>Reactivity</b>	Human,Mouse,Rat
<b>Applications</b>	WB,IHC,IF,IP,ELISA
<b>Gene Name</b>	PFKFB3
<b>Protein Name</b>	6-phosphofructo-2-kinase/fructose-2,6-bisphosphatase 3 (6PF-2-K/Fru-2,6-P2ase 3) (PFK/FBPase 3) (6PF-2-K/Fru-2,6-P2ase brain/placenta-type isozyme) (Renal carcinoma antigen NY-REN-56) (iPFK-2) [Includes: 6-phosphofructo-2-kinase (EC 2.7.1.105); Fructose-2,6-bisphosphatase (EC 3.1.3.46)]
<b>Purification Process</b>	Protein A
<b>Specificity</b>	Endogenous
<b>Formulation</b>	PBS, 50% glycerol, 0.05% Proclin 300, 0.05%BSA
<b>Source</b>	Monoclonal, Rabbit,IgG
<b>Dilution</b>	IHC 1:200-1:1000; WB 1:2000-1:10000; IF 1:200-1:1000; ELISA 1:5000-1:20000; IP 1:50-1:200; Note: For IHC, we suggest antigen retrieval with TE buffer pH 9.0
<b>Concentration</b>	0.5 mg/ml
<b>Purity</b>	≥90%
<b>Storage Stability</b>	-15° C to -25° C/1 year(Do not lower than -25° C)
<b>Synonyms</b>	6-phosphofructo-2-kinase/fructose-2,6-bisphosphatase 3 ; 6PF-2-K/Fru-2,6-P2ase 3 ; PFK/FBPase 3 ; 6PF-2-K/Fru-2,6-P2ase brain/placenta-type isozyme ; Renal carcinoma antigen NY-REN-56 ; iPFK-2 ; [Includes: 6-phosphofructo-2-kinase ; Fructose-2,6-bisphosphatase ; ]
<b>Observed Band</b>	60kD
<b>Calculated Molecular Weight</b>	60kD
<b>Cell Pathway</b>	
<b>Tissue Specificity</b>	Ubiquitous.
<b>Function</b>	Catalyzes both the synthesis and degradation of fructose 2,6-bisphosphate.

## Background

### 杭州臻优品生物科技有限公司

#### 热销产品:

蛋白、一抗、抗体对、ELISA试剂盒、生化试剂盒  
CCK8试剂盒、QPCR检测试剂盒

#### 检测服务:

ELISA检测及定制服务 | 生化检测 | PCR、QPCR检测 | WB检测  
ICO-IP检测 | 切片 | 染色 | 免疫组化 | 免疫荧光 | 透射电镜全套  
| 宏基因组、转录组、基因组、蛋白组、代谢组测序



关注官网



关注客服

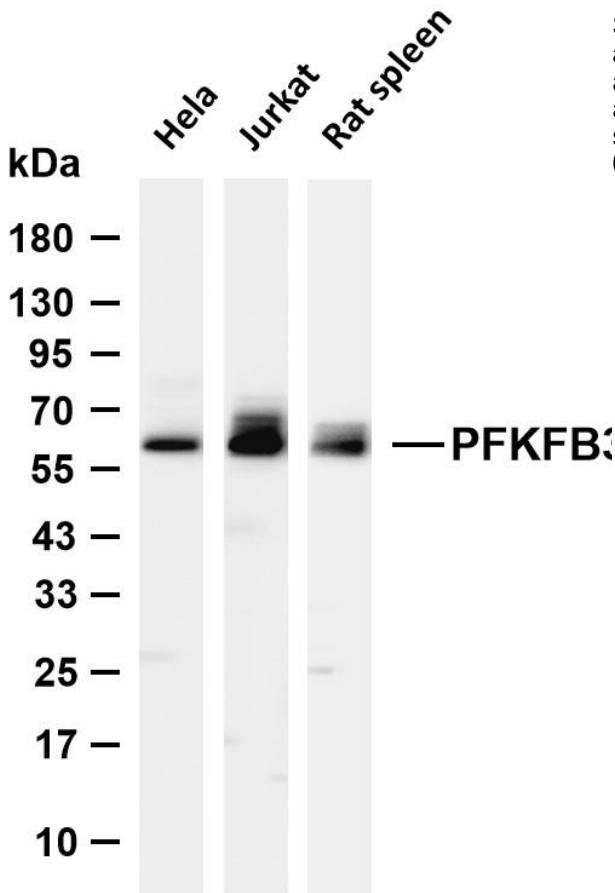


matters needing attention

Avoid repeated freezing and thawing!

Usage suggestions

This product can be used in immunological reaction related experiments. For more information, please consult technical personnel.



Various whole cell lysates were separated by 4-20% SDS-PAGE, and the membrane was blotted with anti-PFKFB3 antibody. The HRP-conjugated Goat anti-Rabbit IgG (H + L) antibody was used to detect the antibody. Lane 1: HeLa Lane 2: Jurkat Lane 3: Rat spleen Predicted band size: 60kDa Observed band size: 60kDa

杭州臻优品生物科技有限公司

热销产品:

蛋白、一抗、抗体对、ELISA试剂盒、生化试剂盒  
CCK8试剂盒、QPCR检测试剂盒

检测服务:

ELISA检测及定制服务 | 生化检测 | PCR、QPCR检测 | WB检测  
ICO-IP检测 | 切片 | 染色 | 免疫组化 | 免疫荧光 | 透射电镜全套  
| 宏基因组、转录组、基因组、蛋白组、代谢组测序



关注官网



关注客服