



# Inhibin $\beta$ -E Rabbit mAb

<b>Catalog No</b>	YP-rAb-17285
<b>Isotype</b>	IgG
<b>Reactivity</b>	Human,Mouse,Rat
<b>Applications</b>	WB,IHC,IF,ELISA
<b>Gene Name</b>	INHBE
<b>Protein Name</b>	Inhibin beta E chain
<b>Purification Process</b>	Protein A
<b>Specificity</b>	Endogenous
<b>Formulation</b>	PBS, 50% glycerol, 0.05% Proclin 300, 0.05%BSA
<b>Source</b>	Monoclonal, Rabbit,IgG
<b>Dilution</b>	IHC 1:200-1:1000; WB 1:2000-1:10000; IF 1:200-1:1000; ELISA 1:5000-1:20000; Note: For IHC, we suggest antigen retrieval with TE buffer pH 9.0
<b>Concentration</b>	0.5 mg/ml
<b>Purity</b>	$\geq 90\%$
<b>Storage Stability</b>	-15° C to -25° C/1 year(Do not lower than -25° C)
<b>Synonyms</b>	INHBE ; Inhibin beta E chain ; Activin beta-E chain
<b>Observed Band</b>	39kD
<b>Calculated Molecular Weight</b>	39kD
<b>Cell Pathway</b>	Secreted .
<b>Tissue Specificity</b>	Liver,Muscle,
<b>Function</b>	Inhibins and activins inhibit and activate, respectively, the secretion of follitropin by the pituitary gland. Inhibins/activins are involved in regulating a number of diverse functions such as hypothalamic and pituitary hormone secretion, gonadal hormone secretion, germ cell development and maturation, erythroid differentiation, insulin secretion, nerve cell survival, embryonic axial development or bone growth, depending on their subunit composition. Inhibins appear to oppose the functions of activins.,similarity:Belongs to the TGF-beta family.,subunit:Homodimeric or heterodimeric through association with alpha and beta subunits, linked by one or more disulfide bonds. Inhibins are heterodimers of one alpha and one beta subunit. Activins are homo- or heterodimers of beta subunits only.,





### Background

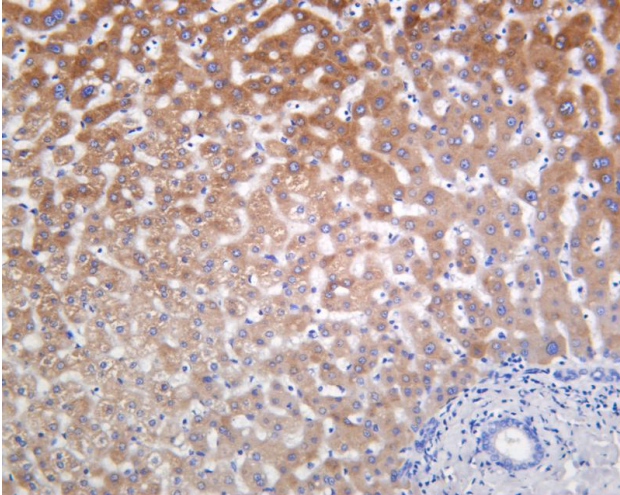
This gene encodes a member of the TGF-beta (transforming growth factor-beta) superfamily of proteins. The encoded preproprotein is proteolytically processed to generate an inhibin beta subunit. Inhibins have been implicated in regulating numerous cellular processes including cell proliferation, apoptosis, immune response and hormone secretion. This gene may be upregulated under conditions of endoplasmic reticulum stress, and this protein may inhibit cellular proliferation and growth in pancreas and liver. [provided by RefSeq, Sep 2016],

### matters needing attention

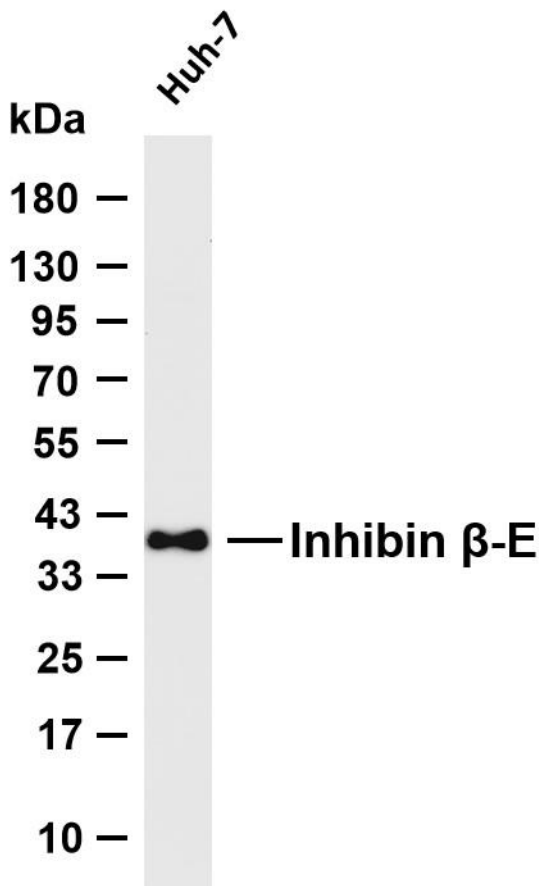
Avoid repeated freezing and thawing!

### Usage suggestions

This product can be used in immunological reaction related experiments. For more information, please consult technical personnel.



Human liver was stained with anti-Inhibin  $\beta$ -E Rabbit antibody



Various whole cell lysates were separated by 4-20% SDS-PAGE, and the membrane was blotted with anti-Inhibin  $\beta$ -E antibody. The HRP-conjugated Goat anti-Rabbit IgG (H + L) antibody was used to detect the antibody. Lane 1: Huh-7 Predicted band size: 39kDa Observed band size: 39kDa

