



# Cdk9 Rabbit mAb

<b>Catalog No</b>	YP-rAb-17282
<b>Isotype</b>	IgG
<b>Reactivity</b>	Human,Mouse,Rat
<b>Applications</b>	WB,IHC,IF,IP,ELISA
<b>Gene Name</b>	CDK9 CDC2L4 TAK
<b>Protein Name</b>	Cdk9
<b>Purification Process</b>	Protein A
<b>Specificity</b>	Endogenous
<b>Formulation</b>	PBS, 50% glycerol, 0.05% Proclin 300, 0.05%BSA
<b>Source</b>	Monoclonal, Rabbit,IgG
<b>Dilution</b>	IHC 1:200-1:1000; WB 1:2000-1:10000; IF 1:200-1:1000; ELISA 1:5000-1:20000; IP 1:50-1:200; Note: For IHC, we suggest antigen retrieval with TE buffer pH 9.0
<b>Concentration</b>	0.5 mg/ml
<b>Purity</b>	≥90%
<b>Storage Stability</b>	-15° C to -25° C/1 year(Do not lower than -25° C)
<b>Synonyms</b>	Cyclin-dependent kinase 9 ; EC 2.7.11.23 ; C-2K ; Cell division cycle 2-like protein kinase 4 ; Cell division protein kinase 9 ; Serine/threonine-protein kinase PITALRE ; Tat-associated kinase complex catalytic subunit ;
<b>Observed Band</b>	43kD
<b>Calculated Molecular Weight</b>	43kD
<b>Cell Pathway</b>	Nucleus. Cytoplasm. Nucleus, PML body. Accumulates on chromatin in response to replication stress. Complexed with CCNT1 in nuclear speckles, but uncomplexed form in the cytoplasm. The translocation from nucleus to cytoplasm is XPO1/CRM1-dependent. Associates with PML body when acetylated.
<b>Tissue Specificity</b>	Ubiquitous.
<b>Function</b>	Catalytic activity:ATP + [DNA-directed RNA polymerase] = ADP + [DNA-directed RNA polymerase] phosphate.,Catalytic activity:ATP + a protein = ADP + a phosphoprotein.,Function:Member of the cyclin-dependent kinase pair (CDK9/cyclin-T) complex, also called positive transcription elongation factor b (P-TEFb), which facilitates the transition from abortive to production elongation by phosphorylating the CTD (C-terminal domain) of the large subunit of RNA polymerase II (RNAP II), SUPT5H and RDBP. The CDK9/cyclin-K complex has also a kinase activity toward CTD of RNAP II and can substitute for P-TEFb in vitro.,similarity:Belongs to the protein kinase superfamily. CMGC Ser/Thr protein

## 杭州臻优品生物科技有限公司

### 热销产品:

蛋白、一抗、抗体对、ELISA试剂盒、生化试剂盒  
CCK8试剂盒、QPCR检测试剂盒

### 检测服务:

ELISA检测及定制服务 | 生化检测 | PCR、QPCR检测 | WB检测  
ICO-IP检测 | 切片 | 染色 | 免疫组化 | 免疫荧光 | 透射电镜全套  
| 宏基因组、转录组、基因组、蛋白组、代谢组测序



关注官网



关注客服



kinase family. CDC2/CDKX subfamily.,similarity:Contains 1 protein kinase domain.,subunit:Associates with CCNT1/cyclin-T1 to form P-TEFb. P-TEFb forms a complex with AFF4/AF5Q31. Also associates with CCNK/cyclin-K. Component of a complex which is at least composed of HTATSF1/Tat-SF1, P-TEFb complex, RNA pol II, SUPT5H, and NCL/nucleolin. Component of the 7SK snRNP complex at least composed of P-TEFb (composed of CDK9 and CCNT1/cyclin-T1), HEXIM1, HEXIM2, BCDIN3, SART3 proteins and 7SK and U6 snRNAs.,tissue specificity:Ubiquitous.,

### Background

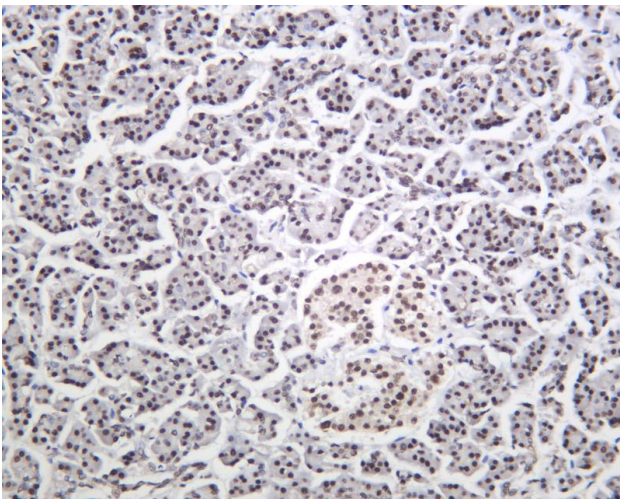
cyclin dependent kinase 9(CDK9) Homo sapiens The protein encoded by this gene is a member of the cyclin-dependent protein kinase (CDK) family. CDK family members are highly similar to the gene products of *S. cerevisiae* cdc28, and *S. pombe* cdc2, and known as important cell cycle regulators. This kinase was found to be a component of the multiprotein complex TAK/P-TEFb, which is an elongation factor for RNA polymerase II-directed transcription and functions by phosphorylating the C-terminal domain of the largest subunit of RNA polymerase II. This protein forms a complex with and is regulated by its regulatory subunit cyclin T or cyclin K. HIV-1 Tat protein was found to interact with this protein and cyclin T, which suggested a possible involvement of this protein in AIDS. [provided by RefSeq, Jul 2008],

### matters needing attention

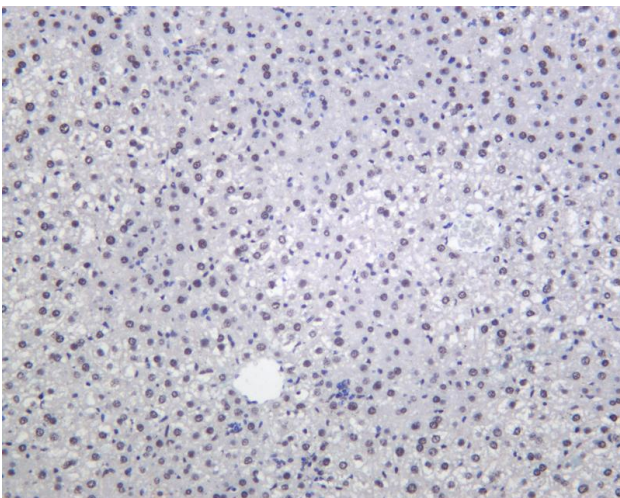
Avoid repeated freezing and thawing!

### Usage suggestions

This product can be used in immunological reaction related experiments. For more information, please consult technical personnel.

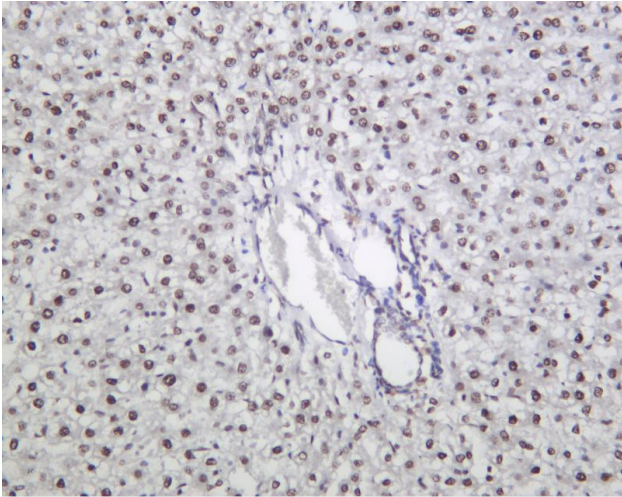


Human pancreas was stained with anti-Cdk9 Rabbit antibody

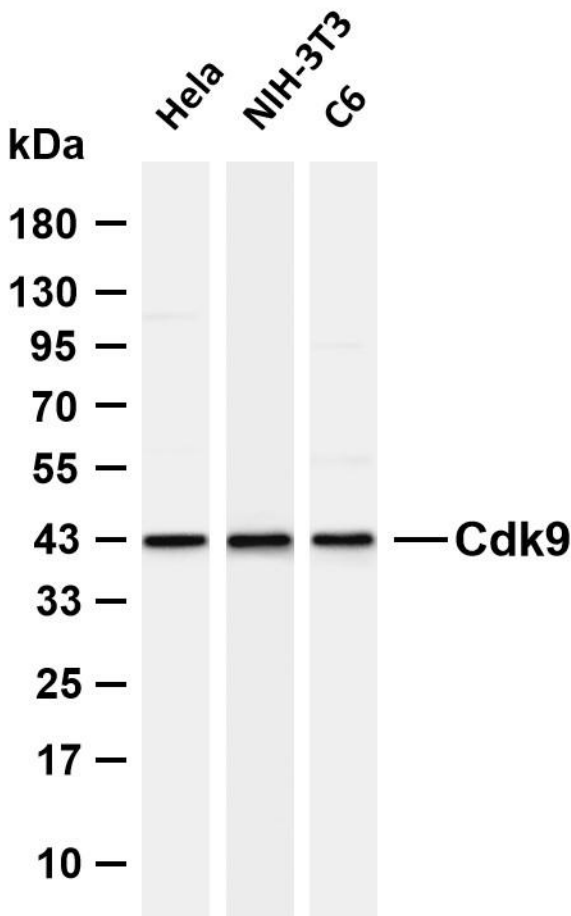


Mouse liver was stained with anti-Cdk9 Rabbit antibody





Rat liver was stained with anti-Cdk9 Rabbit antibody



Various whole cell lysates were separated by 4-20% SDS-PAGE, and the membrane was blotted with anti-Cdk9 antibody. The HRP-conjugated Goat anti-Rabbit IgG (H + L) antibody was used to detect the antibody. Lane 1: HeLa Lane 2: NIH-3T3 Lane 3: C6  
Predicted band size: 43kDa Observed band size: 43kDa

