



Bmi-1 Rabbit mAb

Catalog No	YP-rAb-17281
Isotype	IgG
Reactivity	Human,Mouse,Rat
Applications	WB,IHC,IF,IP,ELISA
Gene Name	BMI1
Protein Name	Polycomb complex protein BMI-1
Purification Process	Protein A
Specificity	Endogenous
Formulation	PBS, 50% glycerol, 0.05% Proclin 300, 0.05%BSA
Source	Monoclonal, Rabbit,IgG
Dilution	IHC 1:100-1:500; WB 1:2000-1:10000; IF 1:200-1:1000; ELISA 1:5000-1:20000; IP 1:50-1:200; Note: For IHC, we suggest antigen retrieval with TE buffer pH 9.0
Concentration	0.5 mg/ml
Purity	≥90%
Storage Stability	-15° C to -25° C/1 year(Do not lower than -25° C)
Synonyms	BMI1 ; PCGF4 ; RNF51 ; Polycomb complex protein BMI-1 ; Polycomb group RING finger protein 4 ; RING finger protein 51
Observed Band	43kD
Calculated Molecular Weight	37kD
Cell Pathway	Nucleus . Cytoplasm .
Tissue Specificity	Epithelium,Erythrocyte,Muscle,Thymus,
Function	Disease:Cooperates with the MYC oncogene to produce B-lymphomas.,Function:Component of the Polycomb group (PcG) multiprotein PRC1 complex, a complex required to maintain the transcriptionally repressive state of many genes, including Hox genes, throughout development. PcG PRC1 complex acts via chromatin remodeling and modification of histones; it mediates monoubiquitination of histone H2A 'Lys-119', rendering chromatin heritably changed in its expressibility. In the PRC1 complex, it is required to stimulate the E3 ubiquitin-protein ligase activity of RNF2/RING2.,PTM:May be polyubiquitinated; which does not lead to proteasomal degradation.,similarity:Contains 1 RING-type zinc finger.,subunit:Component of chromatin-associated class II polycomb repressive complex 1 (PRC1/hPRC-H) at least composed of PCGF2/RNF110, BMI1/PCGF4, CBX2/M33, CBX4/PC2,





CBX8/PC3, PHC1, PHC2, PHC3, SCMH1, RING1 and RNF2/RING2. Also component of E3 ubiquitin ligase complex or human polycomb repressive complex 1-like at least composed of PHC2, BMI1, RING1 and RNF2. Interacts with SPOP. Part of a complex consisting of BMI1, CUL3 and SPOP. Interacts with E4F1.,

Background

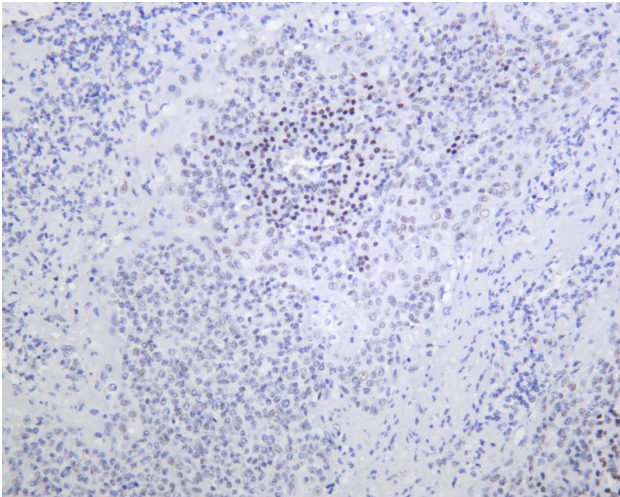
BMI1 proto-oncogene, polycomb ring finger(BMI1) Homo sapiens This gene encodes a ring finger protein that is major component of the polycomb group complex 1 (PRC1). This complex functions through chromatin remodeling as an essential epigenetic repressor of multiple regulatory genes involved in embryonic development and self-renewal in somatic stem cells. This protein also plays a central role in DNA damage repair. This gene is an oncogene and aberrant expression is associated with numerous cancers and is associated with resistance to certain chemotherapies. A pseudogene of this gene is found on chromosome X. Read-through transcription also exists between this gene and the upstream COMM domain containing 3 (COMMD3) gene. [provided by RefSeq, Sep 2015],

matters needing attention

Avoid repeated freezing and thawing!

Usage suggestions

This product can be used in immunological reaction related experiments. For more information, please consult technical personnel.

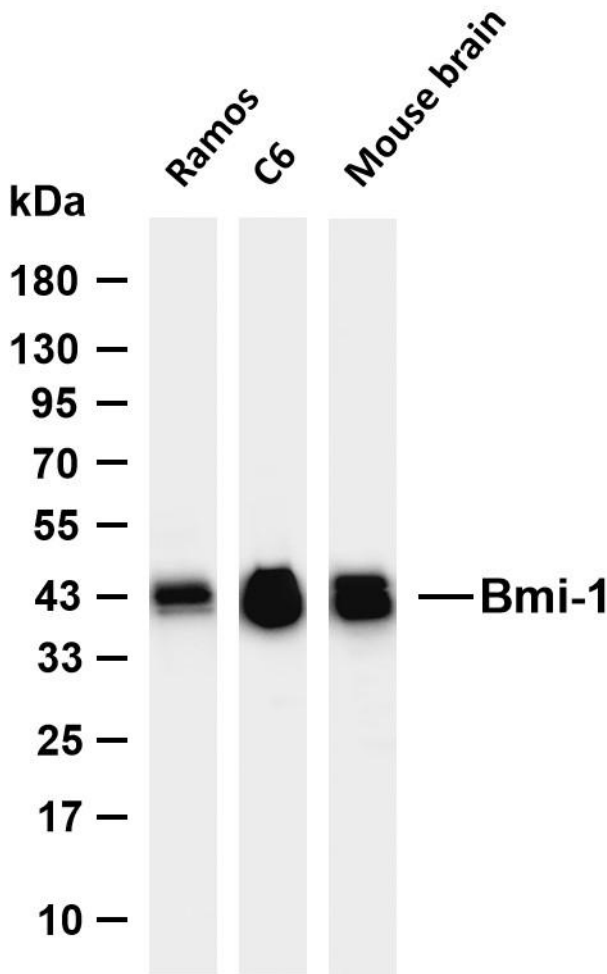


Human tonsil was stained with anti-Bmi-1 Rabbit antibody





Various whole cell lysates were separated by 4-20% SDS-PAGE, and the membrane was blotted with anti-Bmi-1 antibody. The HRP-conjugated Goat anti-Rabbit IgG (H + L) antibody was used to detect the antibody. Lane 1: Ramos Lane 2: C6 Lane 3: Mouse brain Predicted band size: 37kDa Observed band size: 43kDa



杭州臻优品生物科技有限公司

热销产品:

蛋白、一抗、抗体对、ELISA试剂盒、生化试剂盒
CCK8试剂盒、QPCR检测试剂盒

检测服务:

ELISA检测及定制服务 | 生化检测 | PCR、QPCR检测 | WB检测
ICO-IP检测 | 切片 | 染色 | 免疫组化 | 免疫荧光 | 透射电镜全套
| 宏基因组、转录组、基因组、蛋白组、代谢组测序



关注官网



关注客服