



AQP1 Rabbit mAb

Catalog No	YP-rAb-17280
Isotype	IgG
Reactivity	Human,Mouse,Rat
Applications	WB,IHC,IF,ELISA
Gene Name	AQP1
Protein Name	Aquaporin-1
Purification Process	Protein A
Specificity	Endogenous
Formulation	PBS, 50% glycerol, 0.05% Proclin 300, 0.05%BSA
Source	Monoclonal, Rabbit,IgG
Dilution	IHC 1:1000-1:4000; WB 1:2000-1:10000; IF 1:200-1:1000; ELISA 1:5000-1:20000; Note: For IHC, we suggest antigen retrieval with TE buffer pH 9.0
Concentration	0.5 mg/ml
Purity	≥90%
Storage Stability	-15° C to -25° C/1 year(Do not lower than -25° C)
Synonyms	AQP1 ; CHIP28 ; Aquaporin-1 ; AQP-1 ; Aquaporin-CHIP ; Urine water channel ; Water channel protein for red blood cells and kidney proximal tubule
Observed Band	40kD
Calculated Molecular Weight	29kD
Cell Pathway	Cell membrane ; Multi-pass membrane protein .
Tissue Specificity	Detected in erythrocytes (at protein level). Expressed in a number of tissues including erythrocytes, renal tubules, retinal pigment epithelium, heart, lung, skeletal muscle, kidney and pancreas. Weakly expressed in brain, placenta and liver.
Function	Domain:Aquaporins contain two tandem repeats each containing three membrane-spanning domains and a pore-forming loop with the signature motif Asn-Pro-Ala (NPA).,Function:Forms a water-specific channel that provides the plasma membranes of red cells and kidney proximal tubules with high permeability to water, thereby permitting water to move in the direction of an osmotic gradient.,miscellaneous:Pharmacologically inhibited by submillimolar concentrations of mercury.,online information:Blood group antigen gene mutation database,online information:Liquid states - Issue 36 of July 2003,polymorphism:AQP1 is responsible for the Colton blood group system.





Approximately 92% of Caucasians are Co(A+B-) (Ala-46), approximately 8% are Co(A+B+), and only 0.2% are Co(A-B+) (Val-46). Co(A-B-) which is very rare, is due to a complete absence of AQP1.,similarity:Belongs to the MIP/aquaporin (TC 1.A.8) family.,subunit:Homotetramer.,tissue specificity:Expressed in a number of tissues including erythrocytes, renal tubules, retinal pigment epithelium, heart, lung, skeletal muscle, kidney and pancreas. Weakly expressed in brain, placenta and liver.,

Background

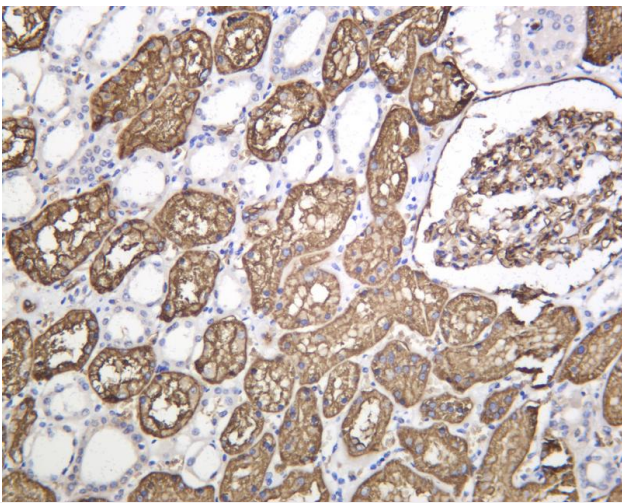
This gene encodes a small integral membrane protein with six bilayer spanning domains that functions as a water channel protein. This protein permits passive transport of water along an osmotic gradient. This gene is a possible candidate for disorders involving imbalance in ocular fluid movement. [provided by RefSeq, Aug 2016],

matters needing attention

Avoid repeated freezing and thawing!

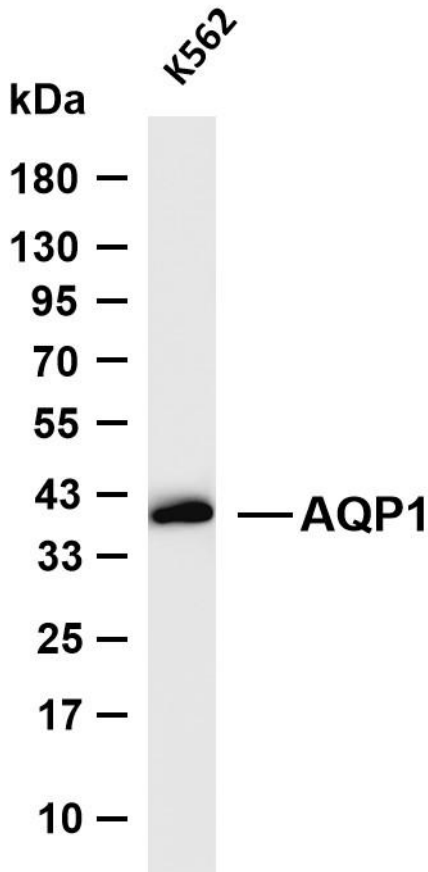
Usage suggestions

This product can be used in immunological reaction related experiments. For more information, please consult technical personnel.



Human kidney was stained with anti-AQP1 Rabbit antibody





Various whole cell lysates were separated by 4-20% SDS-PAGE, and the membrane was blotted with anti-AQP1 antibody. The HRP-conjugated Goat anti-Rabbit IgG (H + L) antibody was used to detect the antibody. Lane 1: K562 Predicted band size: 29kDa Observed band size: 40kDa

