



eEF2 Rabbit mAb

Catalog No	YP-rAb-17267
Isotype	IgG
Reactivity	Human,Mouse,Rat
Applications	WB,IHC,IF,IP,ELISA
Gene Name	EEF2
Protein Name	Elongation factor 2
Purification Process	Protein A
Specificity	Endogenous
Formulation	PBS, 50% glycerol, 0.05% Proclin 300, 0.05%BSA
Source	Monoclonal, Rabbit,IgG
Dilution	IHC 1:200-1:1000; WB 1:1000-1:5000; IF 1:200-1:1000; ELISA 1:5000-1:20000; IP 1:50-1:200; Note: For IHC, we suggest antigen retrieval with TE buffer pH 9.0
Concentration	0.5 mg/ml
Purity	≥90%
Storage Stability	-15° C to -25° C/1 year(Do not lower than -25° C)
Synonyms	EEF2 ; EF2 ; Elongation factor 2 ; EF-2
Observed Band	95kD
Calculated Molecular Weight	95kD
Cell Pathway	Cytoplasm . Nucleus . Phosphorylation by CSK promotes cleavage and SUMOylation-dependent nuclear translocation of the C-terminal cleavage product. .
Tissue Specificity	Brain,Cajal-Retzius cell,Epithelium,Hepatocyte,Ovary,Periph
Function	This protein promotes the GTP-dependent translocation of the nascent protein chain from the A-site to the P-site of the ribosome.,PTM:Diphthamide is 2-[3-carboxyamido-3-(trimethyl-ammonio)propyl]histidine. Diphthamide can be ADP-ribosylated by diphtheria toxin and by Pseudomonas exotoxin A.,PTM:Phosphorylation by EF-2 kinase completely inactivates EF-2.,similarity:Belongs to the GTP-binding elongation factor family. EF-G/EF-2 subfamily.,subunit:Component of the mRNA surveillance SURF complex, at least composed of ERF1, ERF3 (ERF3A or ERF3B), EEF2, UPF1/RENT1, SMG1, SMG8 and SMG9.,
Background	This gene encodes a member of the GTP-binding translation elongation factor family. This protein is an essential factor for protein synthesis. It promotes the





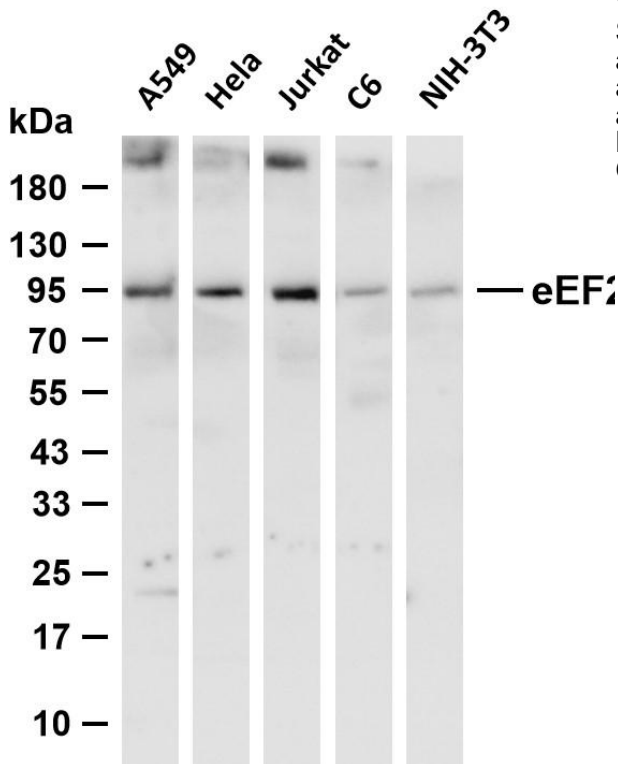
GTP-dependent translocation of the nascent protein chain from the A-site to the P-site of the ribosome. This protein is completely inactivated by EF-2 kinase phosphorylation. [provided by RefSeq, Jul 2008],

matters needing attention

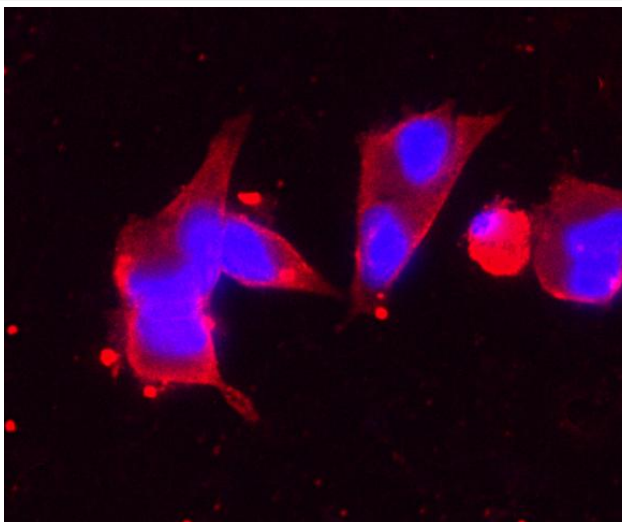
Avoid repeated freezing and thawing!

Usage suggestions

This product can be used in immunological reaction related experiments. For more information, please consult technical personnel.



Various whole cell lysates were separated by 4-20% SDS-PAGE, and the membrane was blotted with anti-EEF2 antibody. The HRP-conjugated Goat anti-Rabbit IgG (H + L) antibody was used to detect the antibody. Lane 1: A549 Lane 2: HeLa Lane 3: Jurkat Lane 4: C6 Lane 5: NIH-3T3 Predicted band size: 95kDa Observed band size: 95kDa



Immunofluorescence analysis of MCF7 cell. 1, primary Antibody was diluted at 1:100(4°C overnight). 2, Goat Anti Rabbit IgG (H&L) - AFluor 594 Secondary antibody(catalog No:

