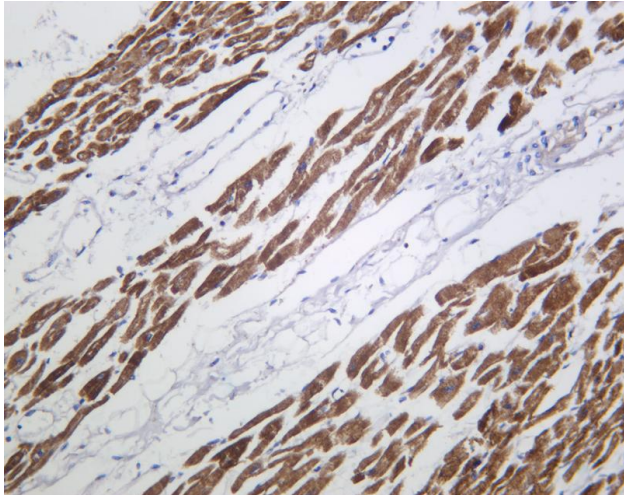




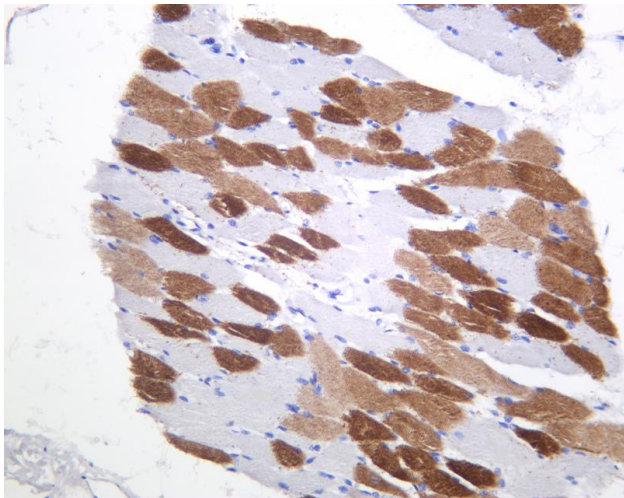
MYH7 Rabbit mAb

Catalog No	YP-rAb-17265
Isotype	IgG
Reactivity	Human,Mouse,Rat,Pig
Applications	WB,IHC,IF,ELISA
Gene Name	MYH7 MYHCB
Protein Name	Myosin-7 (Myosin heavy chain 7) (Myosin heavy chain slow isoform) (MyHC-slow) (Myosin heavy chain, cardiac muscle beta isoform) (MyHC-beta)
Purification Process	Protein A
Specificity	Endogenous
Formulation	PBS, 50% glycerol, 0.05% Proclin 300, 0.05%BSA
Source	Monoclonal, Rabbit,IgG
Dilution	IHC 1:200-1:1000; WB 1:2000-1:10000; IF 1:200-1:1000; ELISA 1:5000-1:20000; Note: For IHC, we suggest antigen retrieval with TE buffer pH 9.0
Concentration	0.5 mg/ml
Purity	≥90%
Storage Stability	-15° C to -25° C/1 year(Do not lower than -25° C)
Synonyms	
Observed Band	223kD
Calculated Molecular Weight	223kD
Cell Pathway	Cytoplasm, myofibril . Cytoplasm, myofibril, sarcomere . Thick filaments of the myofibrils. .
Tissue Specificity	Both wild type and variant Gln-403 are detected in skeletal muscle (at protein level).
Function	
Background	
matters needing attention	Avoid repeated freezing and thawing!
Usage suggestions	This product can be used in immunological reaction related experiments. For more information, please consult technical personnel.

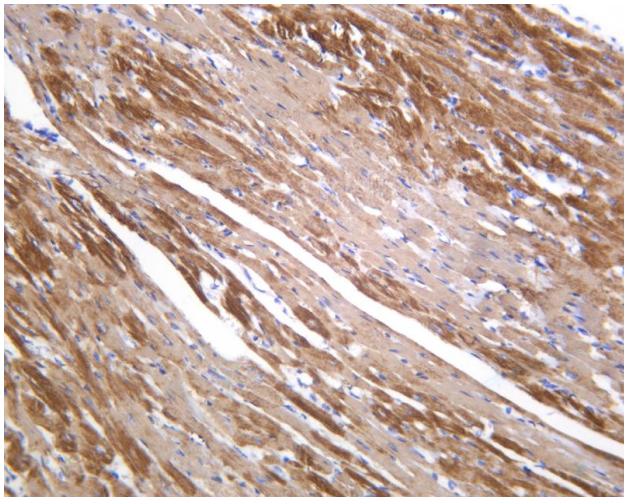




Human cardiac muscle was stained with anti-MYH7 Rabbit antibody

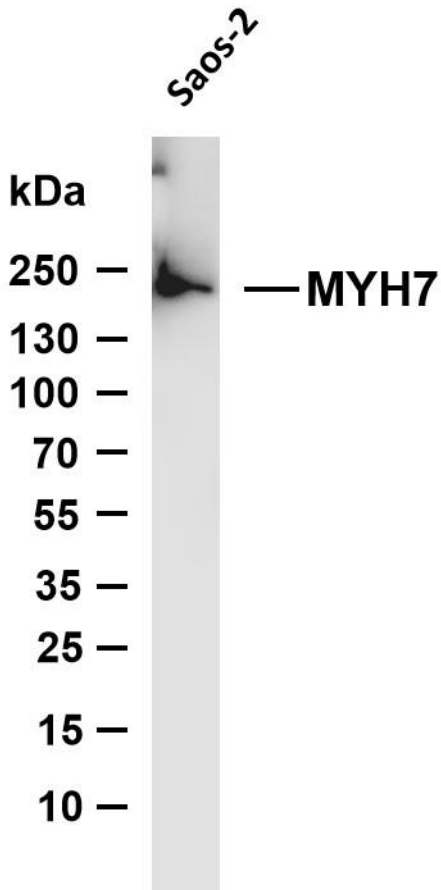


Human skeletal muscle was stained with anti-MYH7 Rabbit antibody



Mouse cardiac muscle was stained with anti-MYH7 Rabbit antibody





Various whole cell lysates were separated by 4-8% SDS-PAGE, and the membrane was blotted with anti-MYH7 antibody. The HRP-conjugated Goat anti-Rabbit IgG (H + L) antibody was used to detect the antibody. Lane 1: Saos-2 Predicted band size: 223kDa Observed band size: 223kDa

