



LRRK2 Rabbit mAb

Catalog No	YP-rAb-17264
Isotype	IgG
Reactivity	Human,Mouse,Rat
Applications	WB,IHC,IF,IP,ELISA
Gene Name	LRRK2 PARK8
Protein Name	Leucine-rich repeat serine/threonine-protein kinase 2 (Dardarin)
Purification Process	Protein A
Specificity	Endogenous
Formulation	PBS, 50% glycerol, 0.05% Proclin 300, 0.05%BSA
Source	Monoclonal, Rabbit,IgG
Dilution	IHC 1:500-1:1000; WB 1:2000-1:10000; IF 1:200-1:1000; ELISA 1:5000-1:20000; IP 1:50-1:200; Note: For IHC, we suggest antigen retrieval with TE buffer pH 9.0
Concentration	0.5 mg/ml
Purity	≥90%
Storage Stability	-15° C to -25° C/1 year(Do not lower than -25° C)
Synonyms	
Observed Band	286kD
Calculated Molecular Weight	286kD
Cell Pathway	Cytoplasmic vesicle . Perikaryon . Golgi apparatus membrane ; Peripheral membrane protein . Cell projection, axon . Cell projection, dendrite . Endoplasmic reticulum membrane ; Peripheral membrane protein . Cytoplasmic vesicle, secretory vesicle, synaptic vesicle membrane . Endosome . Lysosome . Mitochondrion outer membrane ; Peripheral membrane protein . Colocalized with RAB29 along tubular structures emerging from Golgi apparatus (PubMed:23395371). Localizes to endoplasmic reticulum exit sites (ERES), also known as transitional endoplasmic reticulum (tER) (PubMed:25201882). .
Tissue Specificity	Expressed in pyramidal neurons in all cortical laminae of the visual cortex, in neurons of the substantia nigra pars compacta and caudate putamen (at protein level). Expressed in neutrophils (at protein level) (PubMed:29127255). Expressed in the brain. Expressed throughout the adult brain, but at a lower level than in heart and liver. Also expressed in placenta, lung, skeletal muscle, kidney and pancreas. In the brain, expressed in the cerebellum, cerebral cortex, medulla, spinal cord occipital pole, frontal lobe, temporal lobe and putamen. Expression is particularly high in brain dopaminoceptive areas.





Function

Catalytic activity:ATP + a protein = ADP + a phosphoprotein.,Disease:Defects in LRRK2 are the cause of Parkinson disease 8 (PARK8) [MIM:607060, 168600]. Parkinson disease (PD) is a complex, multifactorial disorder that typically manifests after the age of 50 years, although early-onset cases (before 50 years) are known. PD generally arises as a sporadic condition but is occasionally inherited as a simple mendelian trait. Although sporadic and familial PD are very similar, inherited forms of the disease usually begin at earlier ages and are associated with atypical clinical features. PD is characterized by bradykinesia, resting tremor, muscular rigidity and postural instability, as well as by a clinically significant response to treatment with levodopa. The pathology involves the loss of dopaminergic neurons in the substantia nigra and the presence of Lewy bodies (intraneuronal accumulations of aggregated proteins), in surviving neurons in various areas of the brain. PARK8 is an autosomal-dominant late-onset parkinsonism, characterized by onset from 50 to 65 years, with slow progression and relatively benign course.,Function:Probable protein kinase whose role is not yet known. May play a role in the phosphorylation of proteins central to Parkinson disease. May also have GTPase activity.,similarity:Belongs to the protein kinase superfamily.,similarity:Belongs to the protein kinase superfamily. TKL Ser/Thr protein kinase family.,similarity:Contains 1 protein kinase domain.,similarity:Contains 1 Roc domain.,similarity:Contains 16 LRR (leucine-rich) repeats.,subcellular location:Localized in the cytoplasm and associated with cellular membrane structures. Associates with the mitochondrial outer membrane.,subunit:Interacts with PARK2.,tissue specificity:Expressed throughout the adult brain, but at a lower level than in heart and liver. Also expressed in placenta, lung, skeletal muscle, kidney and pancreas. In the brain, expressed in the cerebellum, cerebral cortex, medulla, spinal cord occipital pole, frontal lobe, temporal lobe and putamen. Expression is particularly high in brain dopaminoceptive areas.,

Background

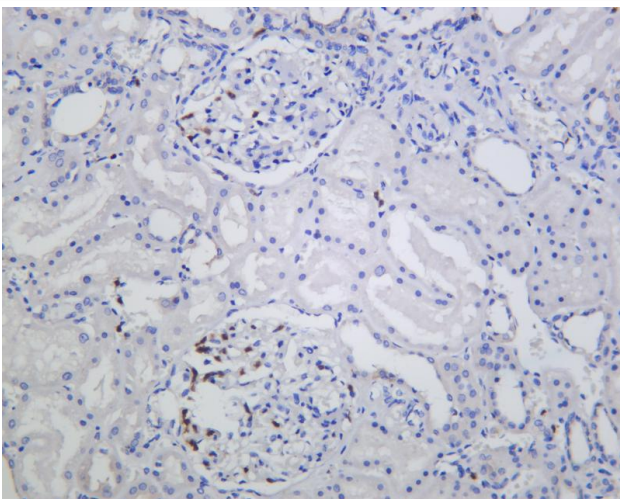
This gene is a member of the leucine-rich repeat kinase family and encodes a protein with an ankryin repeat region, a leucine-rich repeat (LRR) domain, a kinase domain, a DFG-like motif, a RAS domain, a GTPase domain, a MLK-like domain, and a WD40 domain. The protein is present largely in the cytoplasm but also associates with the mitochondrial outer membrane. Mutations in this gene have been associated with Parkinson disease-8. [provided by RefSeq, Jul 2008],

matters needing attention

Avoid repeated freezing and thawing!

Usage suggestions

This product can be used in immunological reaction related experiments. For more information, please consult technical personnel.

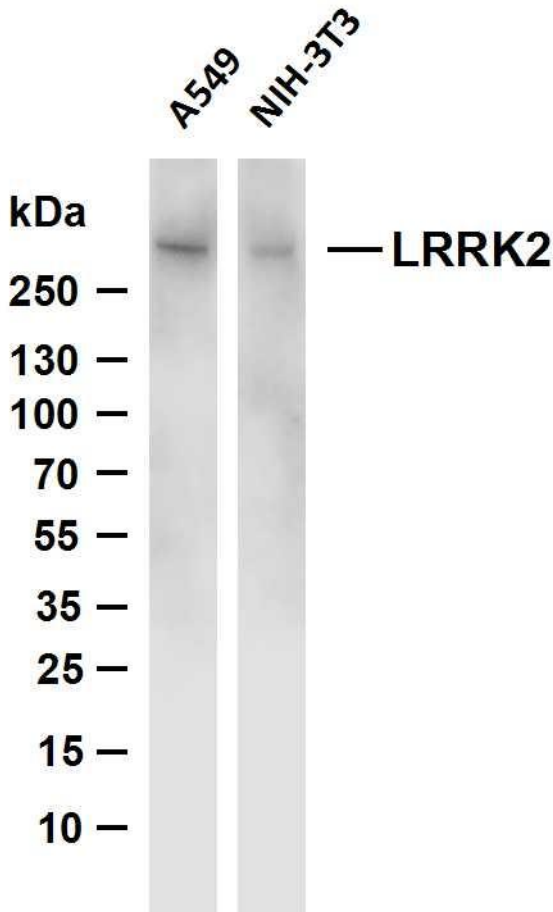


Human kidney was stained with anti-LRRK2 Rabbit antibody





Various whole cell lysates were separated by 4-8% SDS-PAGE, and the membrane was blotted with anti-LRRK2 antibody. The HRP-conjugated Goat anti-Rabbit IgG (H + L) antibody was used to detect the antibody. Lane 1: A549 Lane 2: NIH-3T3 Predicted band size: 286kDa Observed band size: 286kDa



杭州臻优品生物科技有限公司

热销产品:

蛋白、一抗、抗体对、ELISA试剂盒、生化试剂盒
CCK8试剂盒、QPCR检测试剂盒

检测服务:

ELISA检测及定制服务 | 生化检测 | PCR、QPCR检测 | WB检测
ICO-IP检测 | 切片 | 染色 | 免疫组化 | 免疫荧光 | 透射电镜全套
| 宏基因组、转录组、基因组、蛋白组、代谢组测序



关注官网



关注客服