



VGLUT1 Rabbit mAb

Catalog No	YP-rAb-17261
Isotype	IgG
Reactivity	Human,Mouse,Rat
Applications	WB,IHC,IF,IP,ELISA
Gene Name	SLC17A7 BNPI VGLUT1
Protein Name	Vesicular glutamate transporter 1
Purification Process	Protein A
Specificity	Endogenous
Formulation	PBS, 50% glycerol, 0.05% Proclin 300, 0.05%BSA
Source	Monoclonal, Rabbit,IgG
Dilution	IHC 1:200-1:1000; WB 1:2000-1:10000; IF 1:200-1:1000; ELISA 1:5000-1:20000; IP 1:50-1:200; Note: For IHC, we suggest antigen retrieval with TE buffer pH 9.0
Concentration	0.5 mg/ml
Purity	≥90%
Storage Stability	-15° C to -25° C/1 year(Do not lower than -25° C)
Synonyms	VGLU1 ; Vesicular glutamate transporter 1 ; VGluT1 ; Brain-specific Na ⁺ ; + ; -dependent inorganic phosphate cotransporter ; Solute carrier family 17 member 7 ;
Observed Band	62kD
Calculated Molecular Weight	62kD
Cell Pathway	Cytoplasmic vesicle, secretory vesicle, synaptic vesicle membrane . Membrane ; Multi-pass membrane protein . Cell junction, synapse, synaptosome .
Tissue Specificity	Expressed in several regions of the brain including amygdala, cerebellum, cerebral cortex, hippocampus, frontal lobe, medulla, occipital lobe, putamen and temporal lobe.
Function	Mediates the uptake of glutamate into synaptic vesicles at presynaptic nerve terminals of excitatory neural cells. May also mediate the transport of inorganic phosphate.,similarity:Belongs to the major facilitator superfamily. Sodium/anion cotransporter family. VGLUT subfamily.,tissue specificity:Expressed in several regions of the brain including amygdala, cerebellum, cerebral cortex, hippocampus, frontal lobe, medulla, occipital lobe, putamen and temporal lobe.,
Background	The protein encoded by this gene is a vesicle-bound, sodium-dependent phosphate transporter that is specifically expressed in the neuron-rich regions of the brain. It is preferentially associated with the membranes of synaptic vesicles

杭州臻优品生物科技有限公司

热销产品:

蛋白、一抗、抗体对、ELISA试剂盒、生化试剂盒
CCK8试剂盒、QPCR检测试剂盒

检测服务:

ELISA检测及定制服务 | 生化检测 | PCR、QPCR检测 | WB检测
ICO-IP检测 | 切片 | 染色 | 免疫组化 | 免疫荧光 | 透射电镜全套
| 宏基因组、转录组、基因组、蛋白组、代谢组测序



关注官网



关注客服



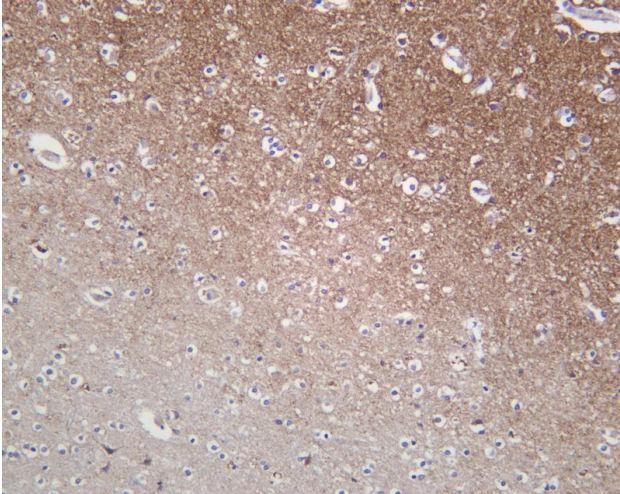
and functions in glutamate transport. The protein shares 82% identity with the differentiation-associated Na-dependent inorganic phosphate cotransporter and they appear to form a distinct class within the Na⁺/Pi cotransporter family. [provided by RefSeq, Jul 2008],

matters needing attention

Avoid repeated freezing and thawing!

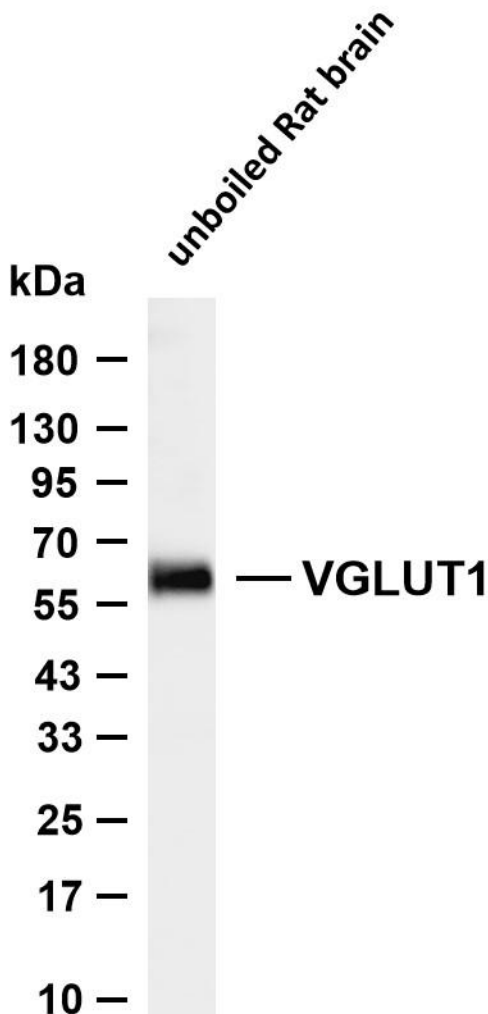
Usage suggestions

This product can be used in immunological reaction related experiments. For more information, please consult technical personnel.



Human brain was stained with anti-VGLUT1 Rabbit antibody

Various whole cell lysates were separated by 4-20% SDS-PAGE, and the membrane was blotted with anti-VGLUT1 antibody. The HRP-conjugated Goat anti-Rabbit IgG (H + L) antibody was used to detect the antibody. Lane 1: unboiled Rat brain Predicted band size: 62kDa Observed band size: 62kDa





杭州臻优品生物科技有限公司

热销产品:

蛋白、一抗、抗体对、ELISA试剂盒、生化试剂盒
CCK8试剂盒、QPCR检测试剂盒

检测服务:

ELISA检测及定制服务 | 生化检测 | PCR、QPCR检测 | WB检测
ICO-IP检测 | 切片 | 染色 | 免疫组化 | 免疫荧光 | 透射电镜全套
| 宏基因组、转录组、基因组、蛋白组、代谢组测序



关注官网



关注客服